



Gunmakers Lane, London, E3

BUTLER & STAG



# Set Within Seconds Of The stunning Victoria Park Is This Spacious One Bedroom, Second Floor Apartment On Gunmakers Lane.



## Leasehold

- Modern One-Bedroom Apartment
- Spacious Double Bedroom
- Close To Victoria Park
- Bright Open-Plan Living Area
- Secure Development With Lift Access
- Prime East London Location

Located within the sought-after Gunmakers Wharf development, this beautifully presented one-bedroom apartment offers stylish contemporary living set alongside the peaceful Hertford Union Canal in the heart of Bow.

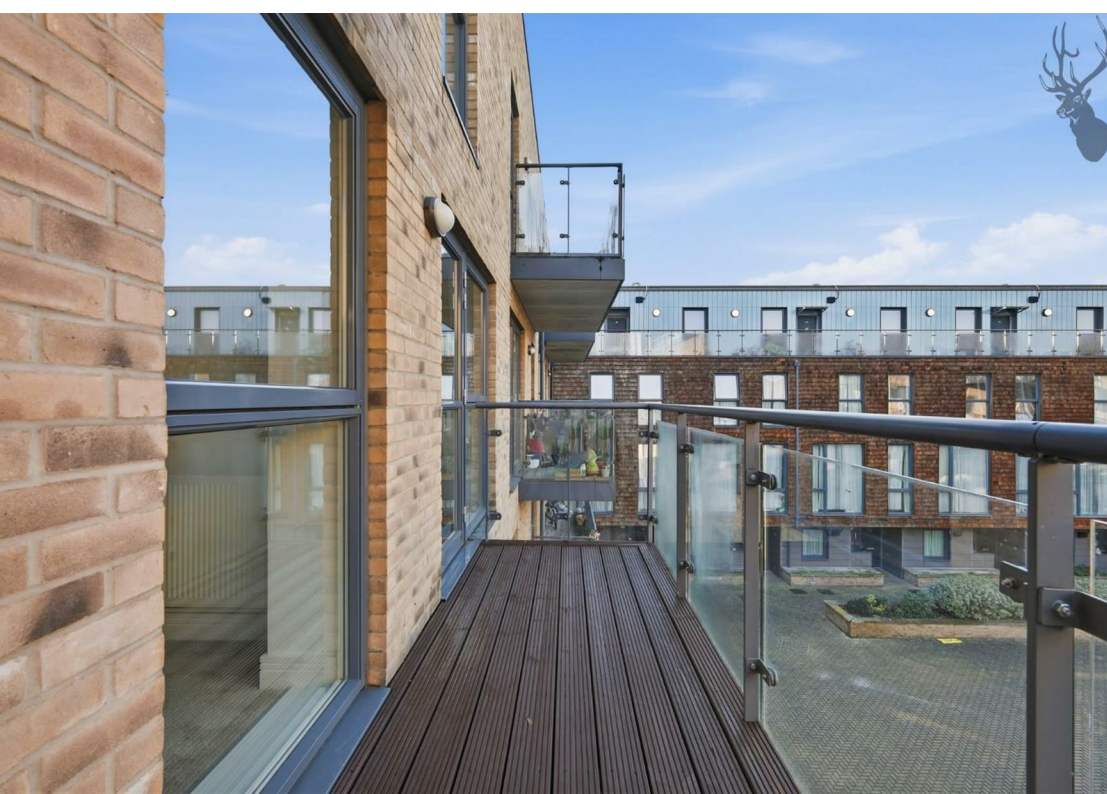
Positioned on the second floor and flooded with natural light, the property features a spacious open-plan reception room with floor-to-ceiling windows, a modern fitted kitchen with integrated appliances, and direct access to a private balcony – perfect for relaxing or entertaining. There is generous double bedroom alongside the sleek three-piece bathroom is finished to an excellent standard, offering both comfort and practicality.

Gunmakers Wharf is a secure, well-maintained development boasting, lift access, landscaped communal areas, and bicycle storage. Residents enjoy a tranquil canal-side setting while being just moments from the wide-open green spaces of Victoria Park and the vibrant attractions of Hackney Wick and Roman Road Market.

Excellent transport links are close by, including Mile End (Central, District & Hammersmith & City lines) and Bethnal Green stations, along with numerous bus routes providing quick and easy access to the City, Canary Wharf, and the West End.

Ideal for first-time buyers, professionals, or investors, this exceptional apartment combines modern comfort with a prime East London location.





## Cyan Apartments

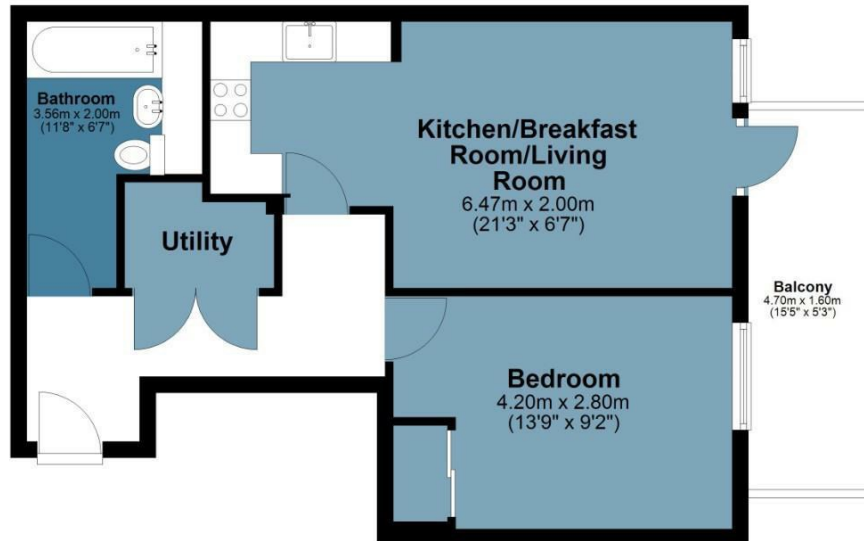
Approx. Gross Internal Area 46.6 Sq M ( 501.1 Sq Ft )

**BUTLER & STAG**



### Second Floor

Approx. 46.6 sq. metres (501.1 sq. feet)



Measurements are approximate and for illustration purposes only. While we do not doubt the accuracy and completeness, we advise you conduct a careful independent assessment of the property to determine monetary value.  
© @modephotouk www.modephoto.co.uk

**BUTLER & STAG**

☎ 020 8102 1236

🏠 508 Roman Road, Bow, London, E3 5LU

✉ bow@butlerandstag.com

[www.butlerandstag.uk](http://www.butlerandstag.uk)

IMPORTANT NOTICE - These particulars have been prepared in good faith and they are not intended to constitute part of an offer or contract. We have not performed a structural survey on this property and the services, appliances and specific fittings have not been tested. All photographs, measurements, floor plans and distances referred to are given as a guide and should not be relied upon.