

26 Peveril Crescent, Chorlton, Manchester, M21 9NS





3 2 2 D


VIDEO TOUR AVAILABLE A delightful & stylishly presented, THREE BEDROOM, semi-detached property. Located on a highly popular and quiet residential crescent here in Chorlton. Within walking distance to the centre of Chorlton with all its array of independent cafes and shops. A ten-minute walk of Longford Park, good local primary schools on your doorstep and the Metrolink station in either Firwood or Chorlton centre giving you direct access to Media City and city life. The property is spread over two floors and in brief consist of; a porch with useful built in storage, a spacious lounge to the front aspect, a dining area with views and access out into the rear enclosed west facing garden, a fitted kitchen, and a sun room benefitting from access out into the rear garden. Stairs leading to the first-floor landing reveal three good sized bedrooms, a white three-piece bathroom suite, and a W.C completing this fantastic family home. The property benefits from gas fired central heating, an alarm system, a driveway providing off road parking, a useful garage, and a good-sized rear garden.

£450,000





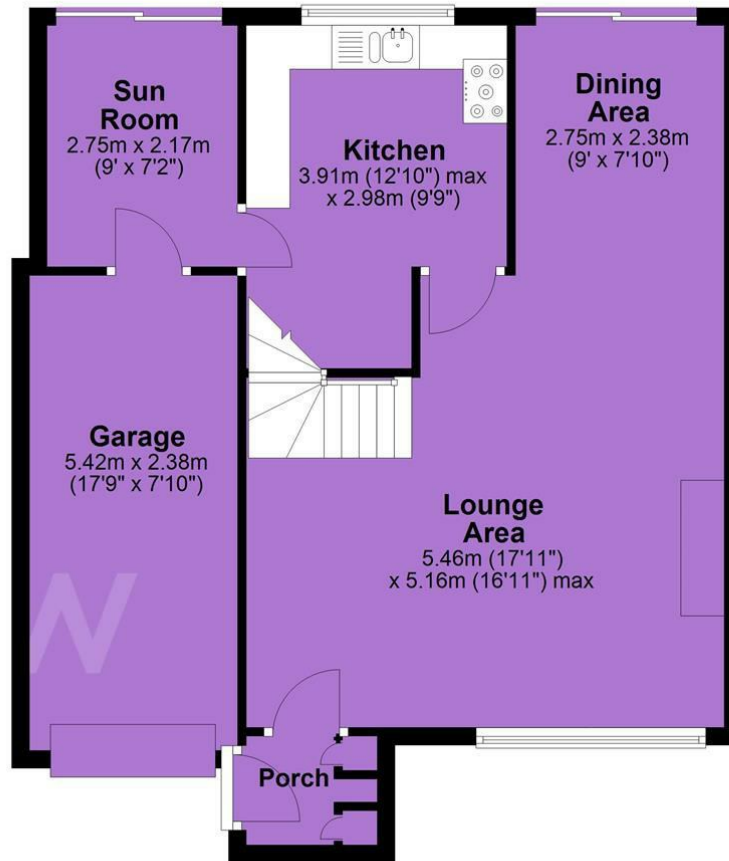
EPC Chart

| Energy Efficiency Rating | | |
|---|---|-----------|
| | Current | Potential |
| Very energy efficient - lower running costs | | |
| (92 plus) A | | |
| (81-91) B | | |
| (69-80) C | | 77 |
| (55-68) D | 65 | |
| (39-54) E | | |
| (21-38) F | | |
| (1-20) G | | |
| Not energy efficient - higher running costs | | |
| England & Wales | EU Directive 2002/91/EC  | |

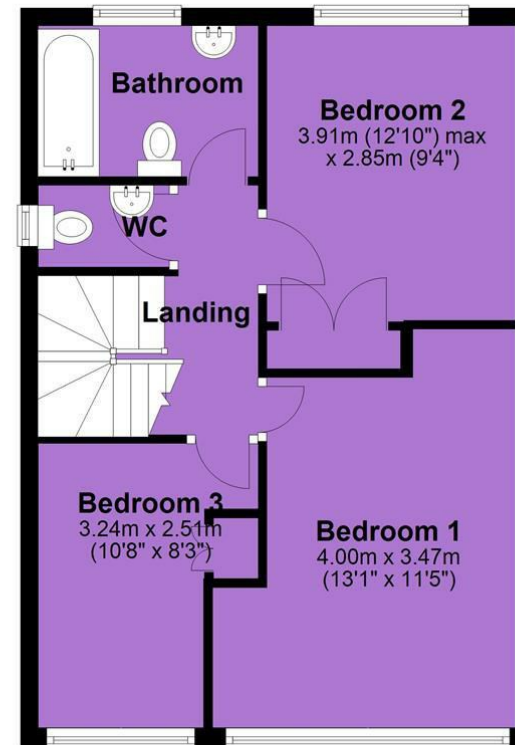


Tenure: Freehold Council Tax Band: C

Ground Floor



First Floor



JP & Brimelow Estate Agents Ltd
430 Barlow Moor Road, Manchester, M21 8AD
Tel: 0161 8822233
E: sales@jpbrimelow.co.uk www.jpandbrimelow.co.uk



JP & Brimelow
ESTATE AGENTS

NOTICE: JP & Brimelow Estate Agents Ltd for themselves and for the vendors or lessors of this property whose agents they are give notice that:

- (i) the particulars are set out as a general outline only for the guidance of intending purchasers or lessees, and do not constitute, nor constitute part of, an offer or contract;
- (ii) all descriptions, dimensions, references to the condition and necessary permissions for use and occupation, and other details are given in good faith and are believed to be correct but any intending purchasers or tenants should not rely on them as statements or representations of fact but must satisfy themselves by inspection or otherwise as to the correctness of each of them;
- (iii) no person in the employment of JP & Brimelow Estate Agents Ltd has any authority to make or give any representation or warranty whatever in relation to this property.

jpandbrimelowestateagents

@jpandbrimelow

