



4 Quarry View, Ashford

Guide Price £500,000

Skippers

4 Quarry View

Ashford, Ashford

An immaculately presented four-bedroom detached family home in the highly sought-after Singleton area, enjoying a superb position with open green space and a wooded backdrop beyond the rear garden. The property offers four reception spaces, a modern kitchen/breakfast room with utility, four generous bedrooms, driveway parking for up to three cars, a double garage, and an attractively landscaped rear garden designed for both entertaining and family enjoyment. Conveniently located within walking distance of Great Chart Primary School. Council Tax band: F

Tenure: Freehold

- Immaculate four-bedroom detached family home
- Highly sought-after Singleton location
- Position siding onto open green space with a wooded backdrop beyond the rear garden
- Four reception spaces including living room, dining room, study, and conservatory
- Modern kitchen/breakfast room
- Separate utility room and ground floor cloakroom
- Four generously sized bedrooms
- Main bedroom with fitted wardrobes and en-suite shower room
- Family bathroom featuring a Jacuzzi bath
- No onward chain



Hallway

Spacious open entrance hallway with stairs leading to the first floor and under-stairs storage cupboard, doors to each room, radiator and wood flooring.

Study

Window to the front, radiator and wood flooring.

Cloakroom

Window to the side, WC, wash basin with storage below, towel radiator and tiled flooring.

Living Room

11' 6" x 17' 9" (3.51m x 5.41m)

Bay window to the front, inset gas fire with feature surround, radiator and fitted carpet. Double doors leading to Dining Room.

Kitchen/Breakfast Room

10' 5" x 13' 7" (3.17m x 4.14m)

Window looking through the conservatory, archway to Utility Room and wood flooring. Modern cream gloss fronted wall and base units with Granite worksurfaces over and under-slung 1.5 bowl stainless steel sink/drainer, built-in appliances including an eye-level oven/grill, 4-zone induction hob with extractor over, dishwasher and fridge/freezer.

Utility Room

Door leading to the outside, radiator and wood flooring. Modern cream gloss fronted wall and base units with Granite worksurfaces over and inset stainless steel sink, built-in washer/dryer, wall mounted gas central heating boiler.

Dining Room

10' 5" x 11' 6" (3.17m x 3.51m)

Bi-folding doors to the conservatory, radiator and wood flooring.

Conservatory

12' 2" x 23' 4" (3.70m x 7.10m)

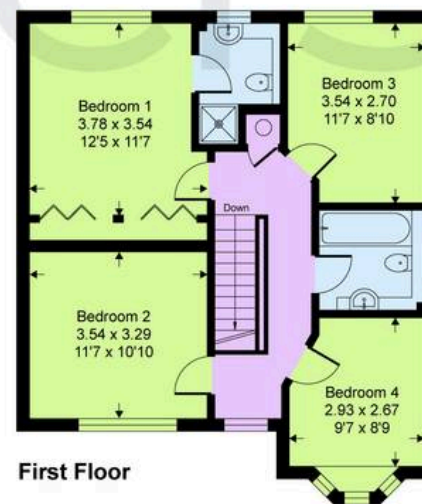
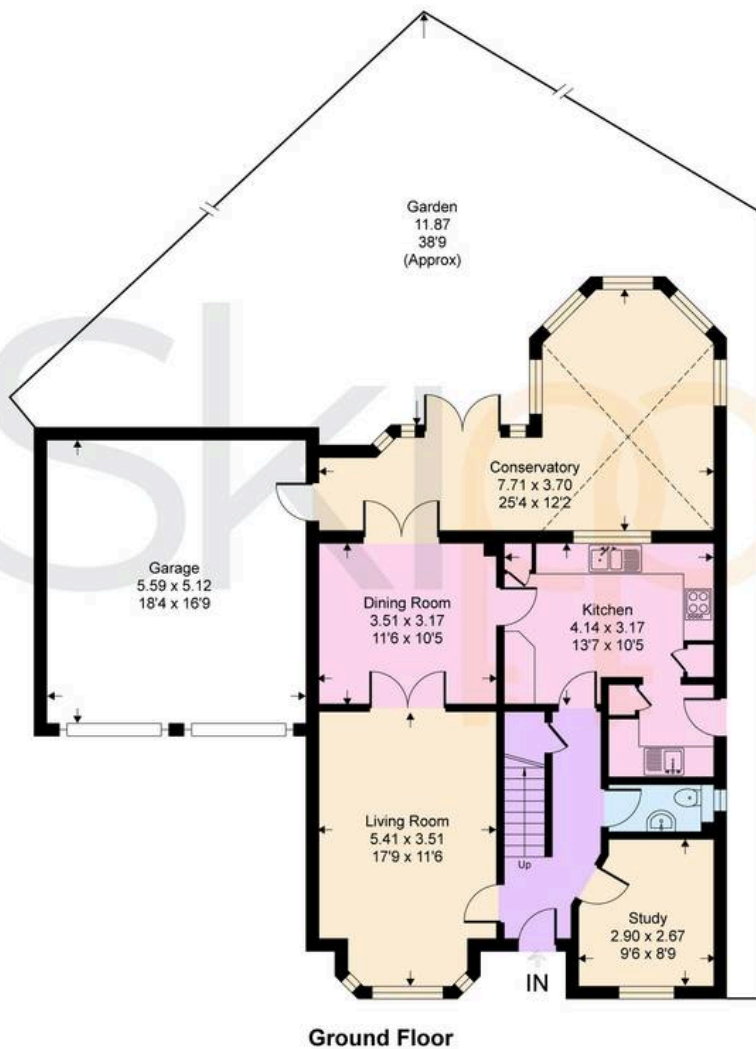
Overlooking the garden with doors leading to the outside, electric wall heater and tiled flooring.





Quarry View, TN23

Approximate Gross Internal Area = 153.9 sq m / 1657 sq ft
Approximate Garage Internal Area = 28.6 sq m / 308 sq ft
Approximate Total Internal Area = 182.5 sq m / 1965 sq ft



This floor plan is for representation purposes only as defined by the RICS code of Measuring Practice (and IPMS where requested) and should be used as such by any prospective purchaser. Whilst every attempt has been made to ensure the accuracy contained here, the measurement of doors, windows and rooms is approximate and no responsibility is taken for any error, omission or mis-statement. Specifically no guarantee is given on the total area of the property if quoted on the plan. Any figure provided is for guidance only and should not be used for valuation purposes.



Skippers Estate Agents – Ashford

5 Kings Parade High Street, Ashford – TN24 8TA

01233 632383

ashford@skippers-ea.co.uk

skippers-ea.co.uk

Skippers

