



Sheen Road, TW10

£850,000

An exquisitely presented first floor apartment with large private roof terrace situated within this handsome period building. The apartment has been modernised to a high specification and offers fantastic entertaining space and natural light in every room.

The property is entered by a communal front door with staircase leading to the first floor apartment. The accommodation comprises two double bedrooms, both with built in wardrobes, a modern bathroom, a modern kitchen and a very generous reception room with door leading out to an enviable private roof terrace.

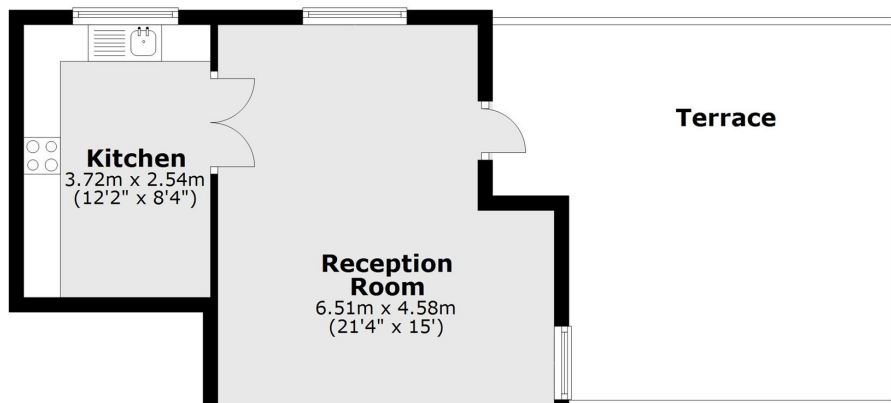
Kings Ride House is ideally located on the corner of Sheen Road and Kings Ride Gate, which is one of the entrances into the bottom of Richmond Park. It is also convenient for the amenities of Richmond town centre, Richmond Hill and Richmond Riverside all being close by. Richmond train station offers access to and from London by tube or rail via the District line, South West trains and the London Overground service.

Features

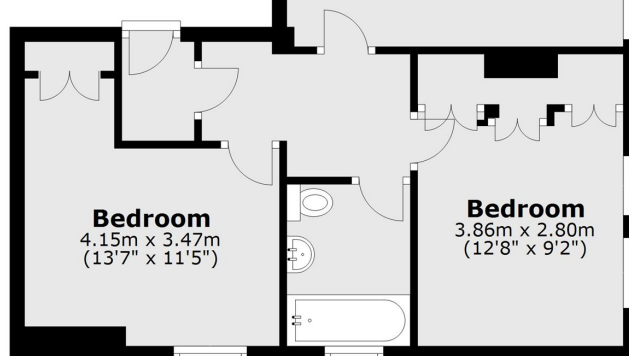
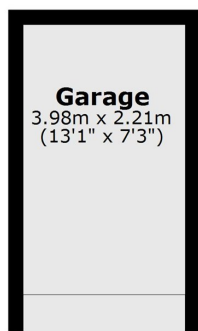
- Two Double Bedrooms
- Modern Interior
- Roof Terrace
- Garage
- No Onward Chain
- Share Of Freehold

Sheen Road, Richmond, TW10

First Floor



Ground Floor



Main area: Approx. 70.6 sq. metres (759.4 sq. feet)
Plus garages, approx. 8.8 sq. metres (94.6 sq. feet)