



Salisbury Road, W13

£1,150,000

Dexters



Salisbury Road, W13

This exceptional end of terrace home has been fully extended and refurbished to create sophisticated living spaces with a seamless functional layout.

Offering an impressive circa 1400 sq.ft over three floors. The entrance hall has a guest WC. There is an elegant double reception room with two feature fire places.

To the rear is the fantastic kitchen/living room with expansive Crittall glass which floods the space with light.

Upstairs there are three double bedrooms, a fourth single bedroom/study with luxury main bathroom and an ensuite shower room on the top floor.

We can't wait to show you the fabulous South facing garden which is beautifully landscaped.

Located in the heart of Northfields close to outstanding schools, local shops and the Piccadilly line tube.

Features

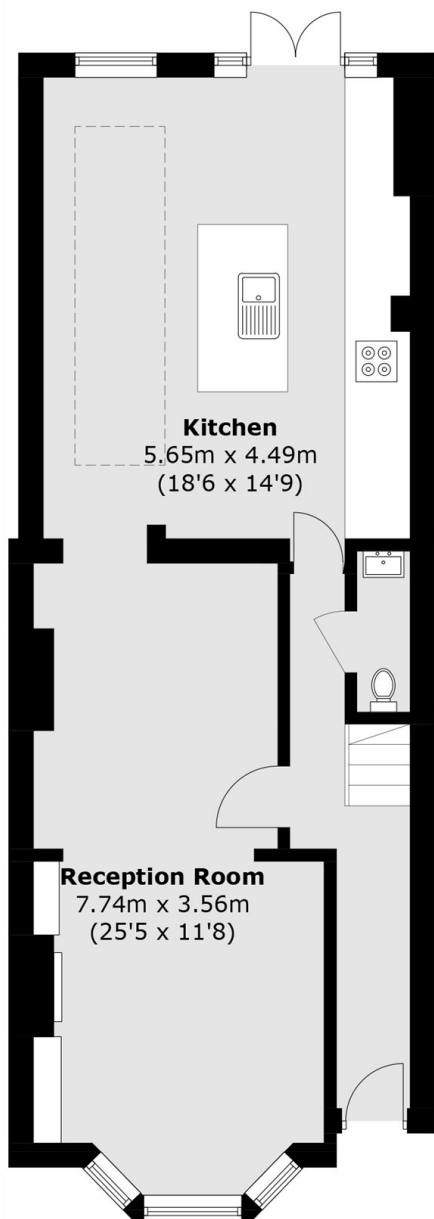
- Four Bedroom House
- Outstanding Condition
- Show Stopper Kitchen
- South Facing Garden
- Outstanding Schools
- Close To Tube



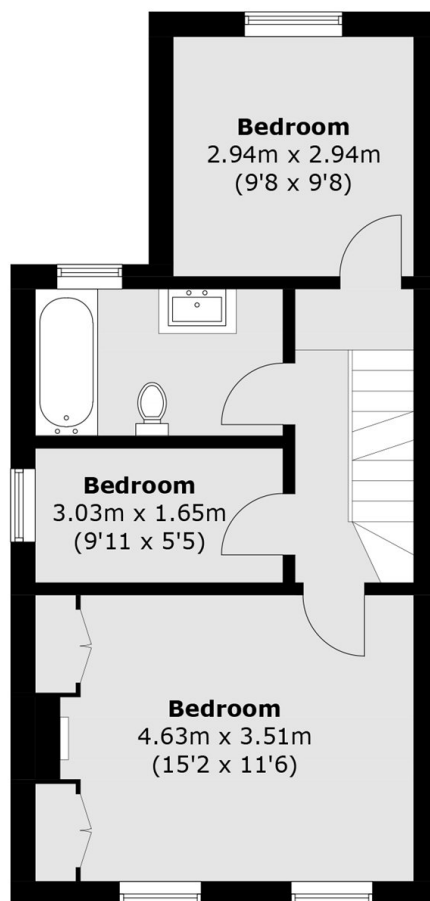




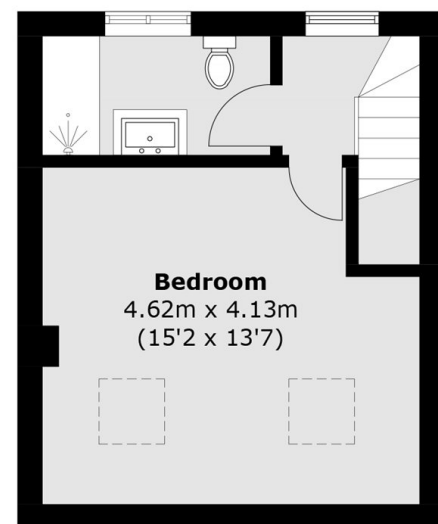
Salisbury Road, London, W13



Ground Floor



First Floor



Second Floor

Total area (approx.): 129.7 sq. m (1,396.0 sq. ft)