

# bear

*Estate Agents*



\* PARKING \* FOUR LARGE BEDROOMS \* TWO BATHROOMS \* MULTIPLE RECEPTION ROOMS \* UTILITY ROOM AND W/C \* Bear Estate Agents are delighted to present this impressive four double-bedroom detached residence, positioned within a sought-after part of Hockley, just moments from the beautiful Hockley Woods. Offering spacious and versatile accommodation throughout, this stunning family home has been modernised to a high standard and is perfectly suited to growing families and buyers seeking both comfort and convenience.

The property features four generous reception rooms, including a bright and airy conservatory, providing excellent living and entertaining space. A contemporary fitted kitchen sits at the heart of the home alongside a separate utility room and a convenient downstairs WC. Modern finishes throughout create a stylish and welcoming atmosphere, while the spacious layout offers flexibility for a variety of lifestyles.

Upstairs, the home benefits from four well-proportioned double bedrooms, including an impressive principal bedroom complete with en-suite bathroom facilities. The remaining bedrooms are served by a modern family bathroom, making this an ideal home for larger families.

Externally, the property enjoys off-street parking, side access and a garage, offering both practicality and additional storage options. Situated close to highly regarded schools, local amenities and excellent transport links, whilst also benefiting from the scenic surroundings of Hockley Woods, this outstanding detached home presents a fantastic opportunity within a desirable village location.

- Detached house
- Four double bedrooms
- Ensuite to bedroom one
- Conservatory
- Modernised throughout
- Utility room
- Off-street parking
- Garage
- Side access
- Close to Hockley Woods

## Spencers

Hockley

**£650,000**

Offers In The Region Of



# Spencers



## Parking

Parking for two vehicles on a block paved driveway with access to the garage.

## Entrance Hall

Smooth ceilings with inset spotlights, wooden flooring throughout and access upstairs accommodation.

## Ground Floor WC

Obscure double glazed window to the side aspect, heated towel rail, WC, vanity sink unit and tiled flooring throughout.

## Lounge

18'11 x 11'8  
Double glazed window to the front aspect, smooth ceiling with pendant ceiling lights, wall mounted radiator, feature fireplace unit, wooden flooring throughout, power points and double doors opening into the dining room.

## Dining Room

13'7 x 9'11  
Smooth ceiling with pendant ceiling light, double glazed French doors accessing the rear garden, wall mounted radiator and carpeted flooring throughout.

## Kitchen

13'10 x 10'6  
Smooth ceiling with inset spotlights, double glazed window to the rear aspect, eye and base level units, inset fridge/freezer, electric hob with extractor fan above, sink, tiled splashbacks, integrated oven, power points, wooden flooring throughout and open access into the breakfast room.

## Breakfast Room

10'0 x 8'2  
Smooth ceilings with inset spotlights, wall mounted radiator, wooden flooring throughout and open access to the conservatory.

## Conservatory

14'10 x 11'2  
Double glazed windows surround, French doors accessing the rear garden, wall mounted radiator and wooden flooring throughout.

## Utility Room

8'0 x 6'2  
Laminate flooring throughout, power points, space for white goods, eye and base level units and access to rear garden.

## First Floor Landing

Carpeted flooring throughout, power points and access to bedrooms and bathroom.

## Bedroom One

15'3 x 11'10  
Double glazed window to the front aspect, smooth ceiling with pendant ceiling light, fitted wardrobe storage, power points, wall mounted radiator, carpeted flooring throughout and access to en-suite bathroom.

## En-suite

Walk in shower cubical with shower head attachment and rainfall shower head, heated chrome towel rail, WC, vanity sink unit and tiled flooring throughout.

## Bedroom Two

13'4 x 9'11  
Smooth ceiling with inset spotlights, double glazed window to the rear aspect, fitted wardrobe storage, power points and carpeted flooring throughout.

## Bedroom Three

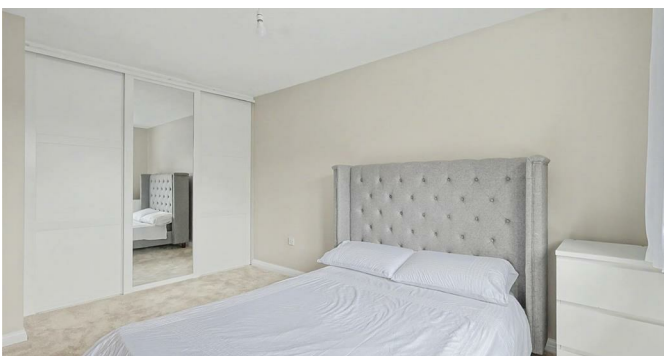
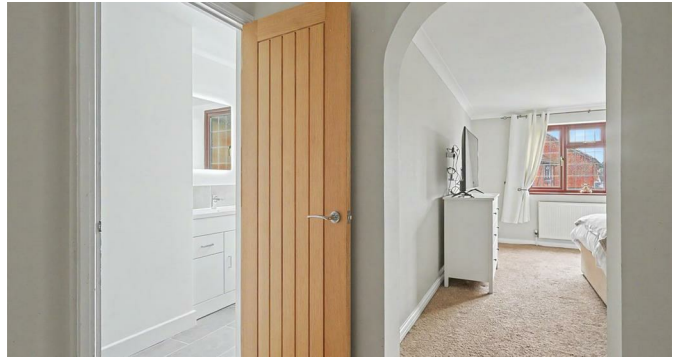
13'8 x 8'6  
Double glazed window to the front, fitted wardrobe storage, wall mounted radiator, power points and carpeted flooring throughout.

## Bedroom Four

11'4 x 7'9  
Double glazed window to the rear, wall mounted radiator, power points and carpeted flooring throughout.

## Bathroom

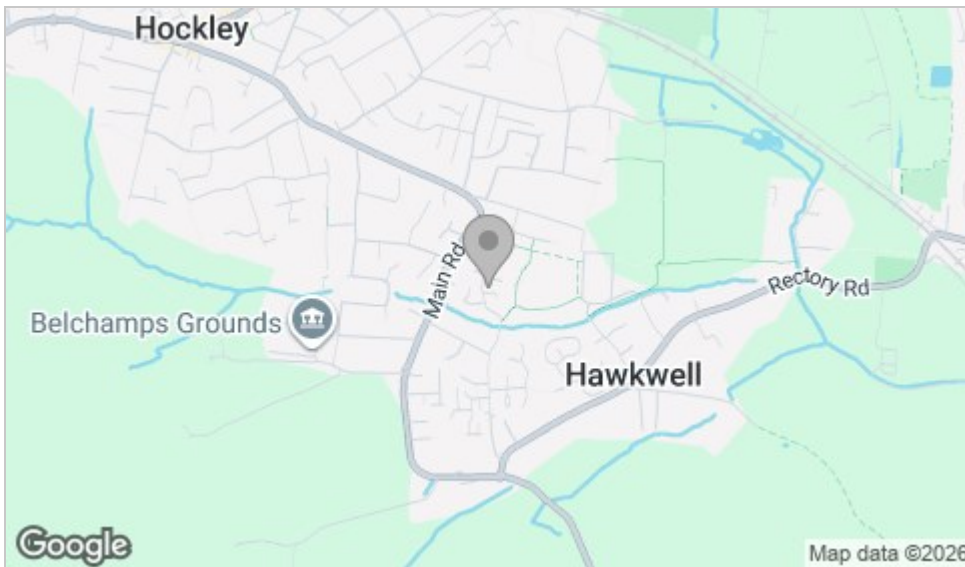
Obscure double glazed window to the rear aspect, smooth ceiling with pendant ceiling light, panelled bath unit with rainfall shower head, tiled surrounds, vanity sink unit, WC and laminate flooring throughout.



# Floor Plan



# Area Map



# Viewing

Please contact our Hockley Office on 01702 416476 if you wish to arrange a viewing appointment for this property or require further information.

These particulars, whilst believed to be accurate are set out as a general outline only for guidance and do not constitute any part of an offer or contract. Intending purchasers should not rely on them as statements of representation of fact, but must satisfy themselves by inspection or otherwise as to their accuracy. No person in this firm's employment has the authority to make or give any representation or warranty in respect of the property.

11 Main Road, Hockley, Essex, SS5 4QY

Office: 01702 416476 [hockley@bearestateagents.co.uk](mailto:hockley@bearestateagents.co.uk) <https://www.bearestateagents.co.uk>

# Energy Efficiency Graph

