



Greenwich High Road, SE10

£325,000

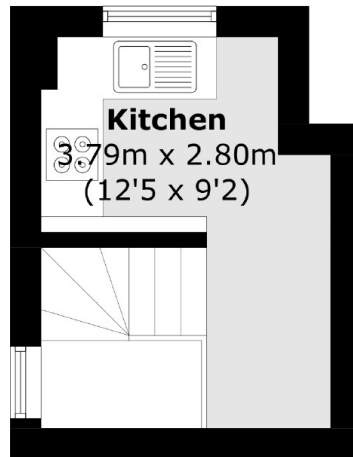
A charming one bedroom period conversion split level flat in a sought after location with a private garden and benefits from being offered to the market chain free!

Conveniently located on Greenwich High Road for all the attractions Royal Greenwich has to offer, moments from both the DLR at Deptford Bridge as well as the DLR and mainline at Greenwich station; giving fast and easy access into both Canary Wharf and the City.

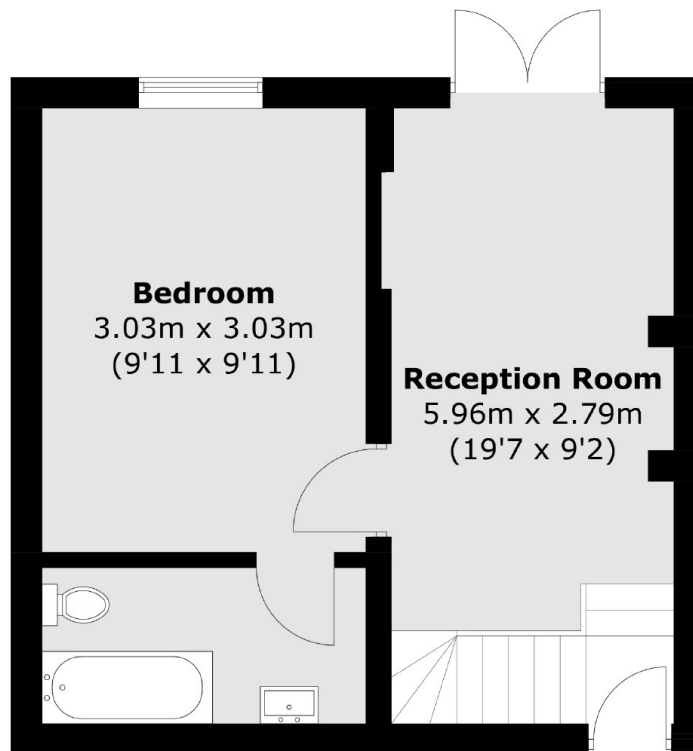
Features

- Chain Free
- Period Conversion
- Private Garden
- Sought After Location
- Split Level
- Leasehold

Greenwich High Road,
London, SE10



First Floor



Ground Floor

Total area (approx.): 46.8 sq. m (503.7 sq. ft)

Dexters

Greenwich
275 Greenwich High Road
Greenwich
London
Sales
020 8815 2215

Energy Rating: D. We aim to make our particulars both accurate and reliable. However they are not guaranteed; nor do they form part of an offer or contract. If you require clarification on any points then please contact us, especially if you're traveling some distance to view. Please note that appliances and heating systems have not been tested and therefore no warranties can be given as to their good working order.

 **RICS** | Regulated
Estate Agent
and Letting Agent

dexters.co.uk