



jordan fishwick

41A Budworth Walk, SK9 2HR
Guide Price £124,950

Budworth Walk Wilmslow SK9 2HR

Guide Price £124,950




Offered to the market with No Vendor Chain this ground floor apartment/maisonette style property offers well proportioned and modern accommodation throughout. Having been recently redecorated and carpeted, the property comprises a private entrance with no communal areas. A UPVC double glazed door provide provides access to the open plan kitchen dining and living space. The kitchen is fitted with a modern kitchen with integrated hob, oven and extractor hood. There is also space for additional kitchen appliances. Heating is provided via a wall mounted modern Glow Worm gas boiler. The living room is spacious with a UPVC double glazed window to the front aspect. An internal hallway leads through to the principal bedroom and the modern spacious bathroom. The bathroom consists of a four piece white bathroom suite which comprises a low level WC, wash hand basin within a vanity storage uni, white panelled bath with tiled splashback and a corner shower enclosure with thermostatically controlled shower fittings. Externally there is a residents car parking area. Ideal for a first time buyer or buy to let investor.

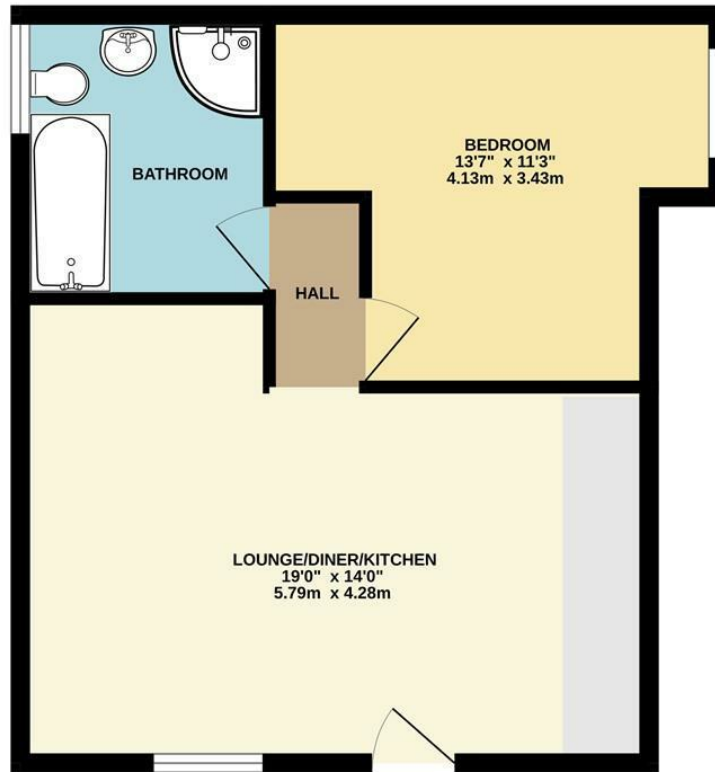


- No Chain
- Ground Floor Apartment
- Private Access with no communal areas
- One bedroom
- Large bathroom
- Gas Central Heating
- Residents car park area



Energy Efficiency Rating		
	Current	Potential
Very energy efficient - lower running costs		
(92 plus) A		
(81-91) B		
(69-80) C	75	77
(55-68) D		
(39-54) E		
(21-38) F		
(1-20) G		
Not energy efficient - higher running costs		
England & Wales	EU Directive 2002/91/EC 	

GROUND FLOOR
441 sq.ft. (41.0 sq.m.) approx.



TOTAL FLOOR AREA: 441 sq.ft. (41.0 sq.m.) approx.
Measurements are approximate. Not to scale. Illustrative purposes only.
Made with Metropix ©2025



These particulars are believed to be accurate but they are not guaranteed and do not form a contract. Neither Jordan Fishwick nor the vendor or lessor accept any responsibility in respect of these particulars, which are not intended to be statements or representations of fact and any intending purchaser or lessee must satisfy himself by inspection or otherwise as to the correctness of each of the statements contained in these particulars. Any floorplans on this brochure are for illustrative purposes only and are not necessarily to scale.

Offices at: Chorlton, Didsbury, Disley, Hale, Glossop, Macclesfield, Manchester Deansgate, Manchester Whitworth Street, New Mills, Sale, Wilmslow and Withington

36-38 Alderley Road, Wilmslow SK91JX
01625 532000

wilmslow@jordanfishwick.co.uk
www.jordanfishwick.co.uk