



- STAGGERED TERRACE
- THREE GOOD SIZE BEDROOMS
- LOUNGE/DINER
- FITTED KITCHEN

Geisthorp Court, Winters Way, Waltham Abbey, EN9 3HL

PRICE: £420,000 FREEHOLD

A stunning and beautifully presented staggered terrace residence situated in a cul de sac location. The property benefits from three good size bedrooms, conservatory, ground floor WC and landscaped rear garden. Being within easy access of local schools and shopping facilities. An internal viewing is strongly recommended.



Property Description

Geisthorp Court is a quiet Cul de sac located just off Winters Way being within easy access for schools of all ages, local shopping facilities and the high tec leisure center with swimming pool.

The town center with its historic Market Square and pedestrianized Sun Street with a variety of shops and eateries and bi-weekly market is within a short drive.

For the commuter Waltham Cross mainline BR station and Epping and Loughton underground stations are within driving distance for direct access into central London.

Junction 26 of the M25 motorway is also within easy access for connections to the M11 and A10.

Since being in the sellers ownership the property has been greatly improved and needs to be viewed internally to be truly appreciated. An internal viewing is strongly recommended.

Accommodation to the first floor comprises three good size bedrooms and are supported by a fully tiled bathroom with a modern three piece suite.

Accommodation to the ground floor comprises a generous entrance hall providing access to the kitchen, guest WC and stairs leading to the first floor landing.

The kitchen is light and airy and has a range of white high gloss wall and base units with Granite work surfaces built in electric oven and gas hob with space for appliances with open plan access to the spacious lounge/diner with laminated flooring and double doors leading to the conservatory with tiled flooring and providing access to the





landscaped rear garden which has been designed with relaxation in mind.

Call now to arrange your viewing appointment.

FOR ROOM SIZES REFER TO FLOORPLAN

TENURE AND CHARGES

Council Tax Epping Forest District Council Band

Tenure - Freehold

UTILITIES AND SUPPLIERS

Electricity - Mains - Utility Warehouse

Water - Mains - Thames Water

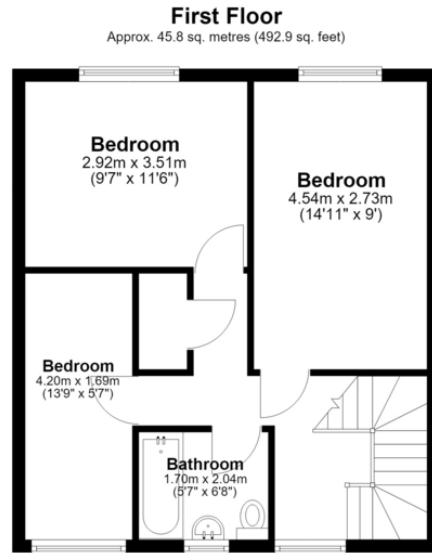
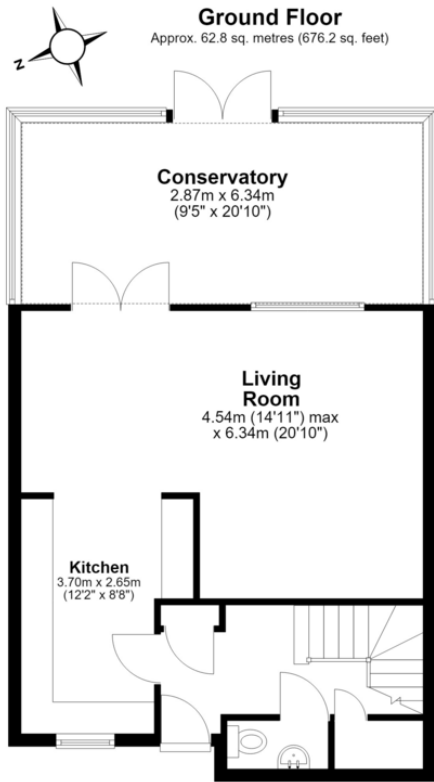
Sewage - Mains - Thames Water

Heating - Gas Central Heating

Broadband - Vodafone

Mobile Signal and Coverage Vodafone Three EE O2





Total area: approx. 108.6 sq. metres (1169.1 sq. feet)

This floor plan has been created by a third party and should be used as a general outline for guidance only. Any areas, measurements or distances quoted are approximate and any intending purchaser or lessee should satisfy themselves by inspection, searches, enquiries and/or full survey as to the correctness of each statement. We accept no responsibility or liability for any loss whatsoever that may arise as a result of this plan and the information contained within.

© @modephoto.uk | www.modephoto.co.uk
Plan produced using PlanUp.

Geisthorpe Court

Score	Energy rating	Current	Potential
92+	A		
81-91	B		82 B
69-80	C	76 C	
55-68	D		
39-54	E		
21-38	F		

25 Market Square, Waltham Abbey,
Essex, EN9 1DU

www.rainbowestateagents.co.uk

01992 711222

rebecca@rainbowestateagents.co.uk

Agents Note: Whilst every care has been taken to prepare these particulars, they are for guidance purposes only. All measurements are approximate and for general guidance purposes only and whilst every care has been taken to ensure their accuracy, they should not be relied upon and potential buyers/tenants are advised to recheck the measurements