



## BRYANSTON SQUARE, W1H

£2,300,000

Featuring lovely west facing views over the private communal garden, this third floor flat features three bedrooms, two bathrooms, a guest cloakroom, kitchen and a reception room with a dining area.

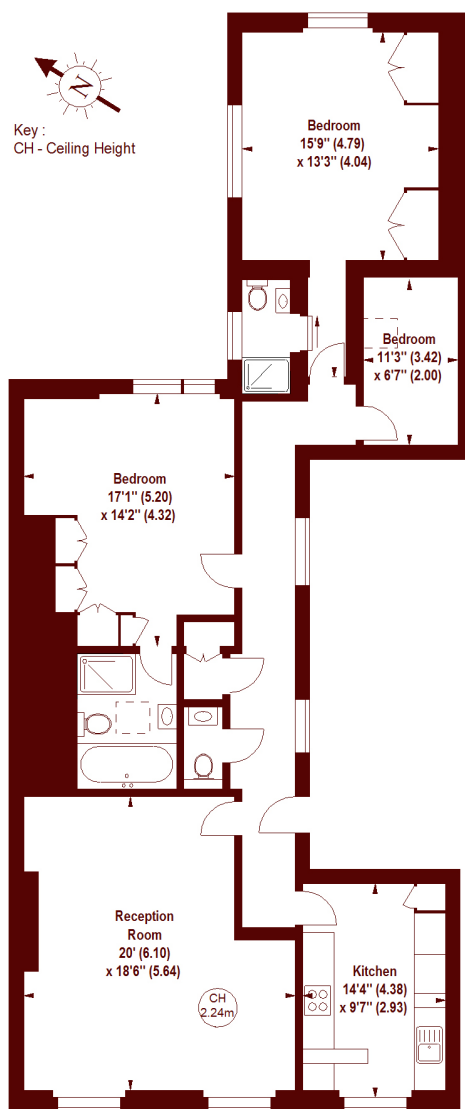
Three bedrooms  
Communal gardens

Period property  
Beautiful views

# STEP INSIDE BRYANSTON SQUARE

## Bryanston Square, W1H

APPROX. GROSS INTERNAL FLOOR AREA 1386 SQFT / 128.76 SQM



### THIRD FLOOR

The floor plan is not to scale and measurements and areas shown are approximate and therefore should be used for illustrative purposes only. The plan has been prepared in accordance with the RICS code of Measuring Practice and whilst we have confidence in the information produced, it must not be relied on. If there is any aspect of particular importance, you should carry out or commission your own inspection of the property.  
Copyright of FeaturePRO.

Marylebone & Mayfair  
020 7935 1775

Energy Rating: We aim to make our particulars both accurate and reliable. However, they are not guaranteed; nor do they form part of an offer or contract. If you require clarification on any points then please contact us, especially if you're traveling some distance to view. Please note that appliances and heating systems have not been tested and therefore no warranties can be given as to their good working order

MARSH &  
PARSONS