

Energy Efficiency Rating

	Current	Potential
Very energy efficient - lower running costs		
(92 plus) A		
(81-91) B		85
(69-80) C	75	
(55-68) D		
(39-54) E		
(21-38) F		
(1-20) G		
Not energy efficient - higher running costs		
England & Wales	EU Directive 2002/91/EC	



388 London Road, Slough, Berkshire, SL3 7HX

Price Guide £895,000

- Five-Bedroom Semi-Detached Family Home
- 26ft Lounge and Dining room
- Powered Outbuilding And Large Rear Garden
- Two Modern Bathrooms including Rainfall Shower
- Langley Elizabeth Line - 1.5 Miles
- Renovated 26ft Open-Plan Kitchen/Family Room with Island
- Potential To Extend (STPP)
- Master Bedroom with Full-Wall Fitted Wardrobes
- Block-Paved Driveway - Parking for Multiple Vehicles
- Holy Family Primary and Langley Grammar Nearby

388 London Road, Slough SL3 7HX

The Flatman Partnership proudly presents this exceptional five-bedroom semi-detached family home just off Langley High Street, extending to an impressive 2,405 sq ft of total floor space - a property that must be viewed to be fully appreciated.

A wide block-paved driveway with parking for multiple vehicles leads to a striking double front door. Inside, the ground floor offers a porch, entrance hall, study, fifth bedroom, and downstairs WC. The showstopper is the spectacular renovated 26ft open-plan kitchen and family room, featuring gloss white cabinetry, central island with breakfast bar, and stylish wood-effect flooring - flowing seamlessly into a 26ft lounge and dining room, delivering a connected living space rarely found in a semi-detached home.

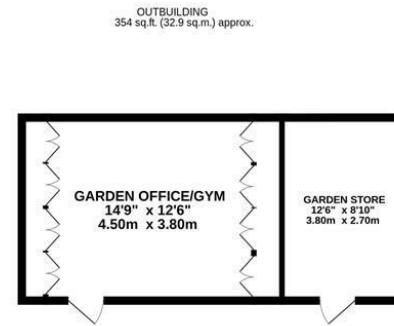
The full-width conservatory opens onto an outstanding rear garden with a large patio, generous lawn, and mature planting. A substantial powered outbuilding offers a garden office/gym and separate store - ideal for home working or fitness.

Upstairs, four double bedrooms all benefit from fitted wardrobes and natural light. The master features bespoke full-wall wardrobes and a bay window. Two modern bathrooms include a family bathroom with feature mosaic tiling and rainfall shower, plus a separate contemporary shower room.

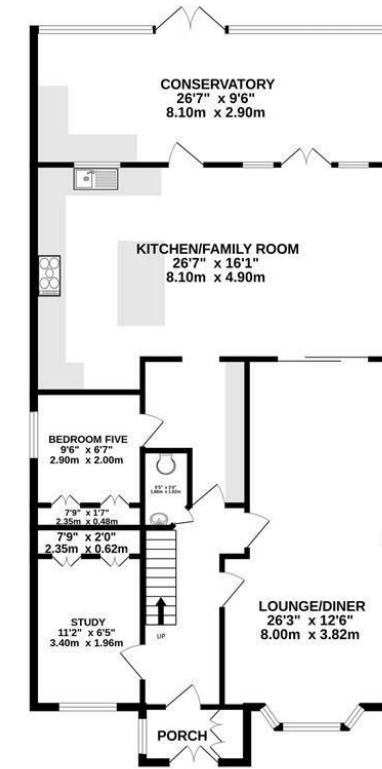
Langley station (Elizabeth Line) is 1.5 miles away, with easy access to M4 and M25. Walking distance to outstanding local schools including Holy Family Primary and Langley Grammar.



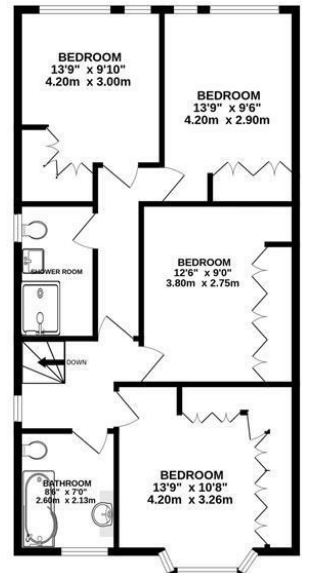
Council Tax Band: E



OUTBUILDING
354 sq.ft. (32.9 sq.m.) approx.



GROUND FLOOR
1287 sq.ft. (119.6 sq.m.) approx.



1ST FLOOR
765 sq.ft. (71.0 sq.m.) approx.

TOTAL FLOOR AREA : 2405 sq.ft. (223.5 sq.m.) approx.

Whilst every attempt has been made to ensure the accuracy of the floorplan contained here, measurements of doors, windows, rooms and any other items are approximate and no responsibility is taken for any error, omission or mis-statement. This plan is for illustrative purposes only and should be used as such by any prospective purchaser. The services, systems and appliances shown have not been tested and no guarantee as to their operability or efficiency can be given.
Made with Metropix ©2024

