



*Ashley King*

# New Providence Wharf, London, E14 9PW

£495,000

🛏️ 2 🪑 2 🚗 1



Discover contemporary waterside living in this beautifully designed two-bedroom apartment at the New Wharf development. Finished to an exceptional standard throughout, this bright and spacious home offers a perfect blend of style, comfort and convenience.

The open-plan living, kitchen and dining area features floor-to-ceiling windows that flood the space with natural light while offering tranquil views over the Wharf. A fully integrated kitchen comes complete with premium appliances, generous storage, and elegant worktops – ideal for both everyday cooking and entertaining.

The property boasts two well-proportioned bedrooms, including a luxurious principal bedroom with fitted wardrobes and access to a modern en-suite shower room. The second bedroom is perfect as a guest room, home office, or dressing space. A contemporary family bathroom with high-quality fixtures completes the accommodation.

Additional benefits include private balcony, underfloor heating, secure entry system, lift access, and beautifully landscaped communal areas. Residents also enjoy exclusive amenities such as a concierge service, cycle storage, and riverside walking routes right on the doorstep.

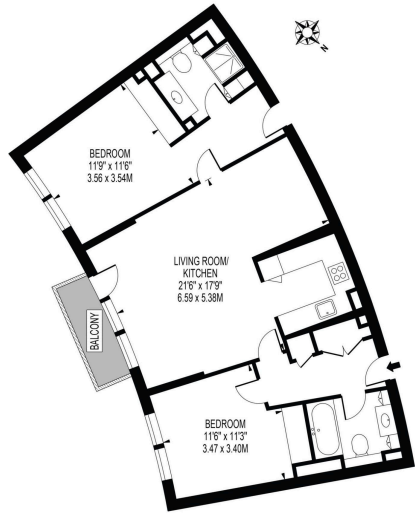
Ideally located for local shops, cafés, and excellent transport links, this stunning Wharf apartment offers an unbeatable lifestyle in a vibrant waterfront setting.

Located on the 14th floor of the prestigious New Providence Wharf development, this stylish and modern two-bedroom, two bathroom apartment offers breathtaking views over the River Thames. This apartment offers a rare combination of luxury, location and lifestyle, making it an ideal choice for those looking to enjoy all the benefits of living in one of London's most vibrant districts. Whether you are seeking a home or a smart investment, this property is sure to impress.

Just a 10-minute walk from the apartment, Canary Wharf Station offers fast access to Jubilee Line and approximately a 5-minute walk to Heron Quays DLR.

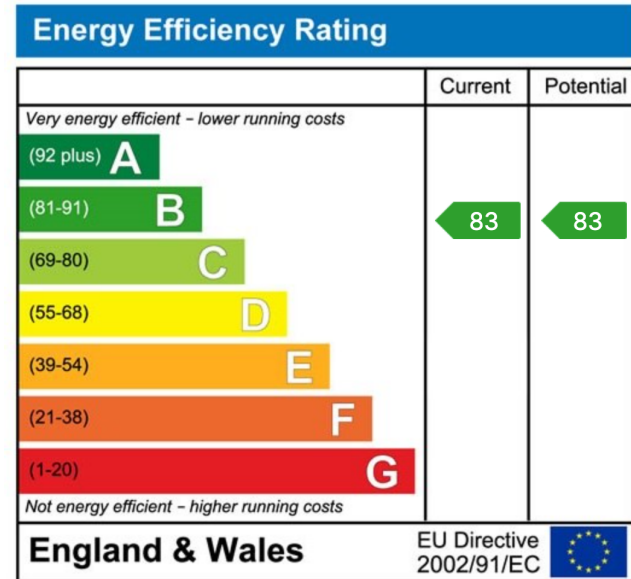
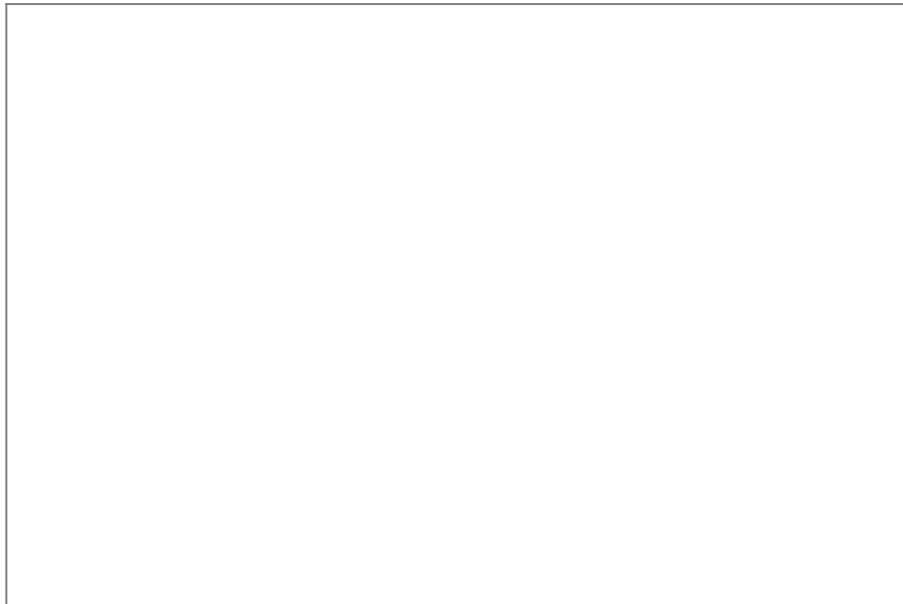


**NEW PROVIDENCE WHARF**  
 APPROXIMATE GROSS INTERNAL FLOOR AREA: 887 SQ FT - 82.40 SQ.M



FOR ILLUSTRATION PURPOSES ONLY  
THIS FLOOR PLAN SHOULD BE USED AS A GENERAL OUTLINE FOR GUIDANCE ONLY AND DOES NOT CONSTITUTE IN WHOLE OR IN PART AN OFFER OR CONTRACT. ANY INTENDING PURCHASER OR LESSEE SHOULD SATISFY THEMSELVES BY INSPECTION, MEASUREMENTS AND FULL SURVEY AS TO THE CORRECTNESS OF EACH STATEMENT. ANY AREAS, MEASUREMENTS OR DIMENSIONS QUOTED ARE APPROXIMATE AND SHOULD NOT BE USED TO VALUE A PROPERTY OR BE THE BASIS OF ANY SALE OR LET.

- TWO BEDROOMS
- TWO BATHROOMS
- PRIVATE BALCONY
- 24 HRS CONCIERGE SERVICE
- RESIDENTS' GYM, SWIMMING POOL AND COMMUNAL GARDENS
- STUNNING VIEWS OF RIVER THAMES
- 10 MINUTE WALK TO CANARY WHARF STATION ( JUBILEE LINE )



Ashley King Estate, Lettings & Asset Management  
 69 Cannon Workshops, London E14 4AS  
 T: 020 7052 4668 E: docklands@ashleykinguk.com

