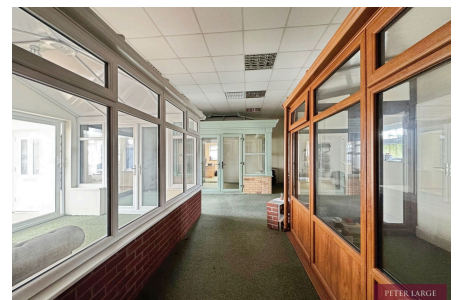


Offices, warehouse and showroom, Garford Road, Rhyl, LL18 3UF

£275,000

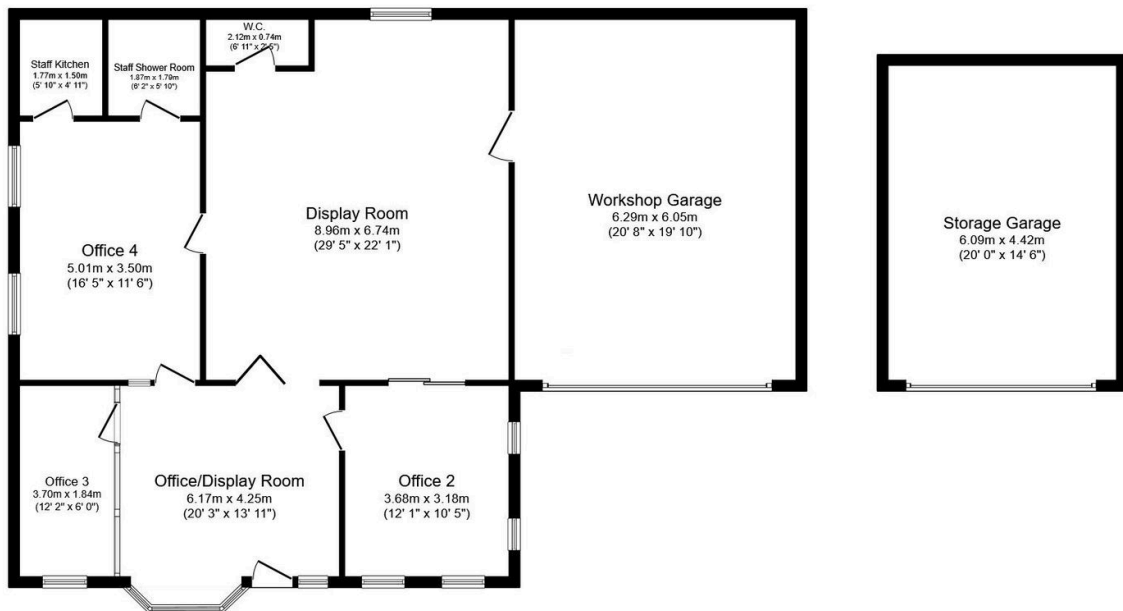
🚗 0 🏠 2 🛋️ 5



Due to the company relocating an opportunity has arisen to purchase this commercial premises which comprises a light industrial/workshop and has been established as a family concern, retailing conservatories, windows, doors, roof lights and gardens stores. The freehold site, with offices, buildings and garages, has an extensive forecourt display with ample parking for staff and customers adjoining. It occupies a prominent corner position on the main coast road with an area of 0.19 acres. The site is a rare find standing within one mile of Rhyl's town centre, close to Rhyl's golf course and a short walk from the promenade. It is very versatile and lends itself to a numerous uses.

Key Features

- Prominent detached corner commercial property
- B1 - B8 Business, light/ general industrial and offices
- Within one mile of Rhyl centre
- Good road links
- Freehold / EPC - / No rates
- Rare freehold coastal opportunity
- Extensive forecourt with ample parking
- Short walk to seafront and promenade
- Suitable for various commercial uses
- Date: 12/03/2026



Floor Plan

Floor area 141.9 sq.m. (1,527 sq.ft.)

Garage

Floor area 26.9 sq.m. (290 sq.ft.)

Total floor area: 168.8 sq.m. (1,817 sq.ft.)

This floor plan is for illustrative purposes only. It is not drawn to scale. Any measurements, floor areas (including any total floor area), openings and orientations are approximate. No details are guaranteed, they cannot be relied upon for any purpose and do not form any part of any agreement. No liability is taken for any error, omission or misstatement. A party must rely upon its own inspection(s). Powered by www.Propertybox.io