



25, Morant View, Bowbrook, Shrewsbury, SY5 8QF
£1,450 Per Month



25, Morant View, Bowbrook, Shrewsbury, SY5 8QF

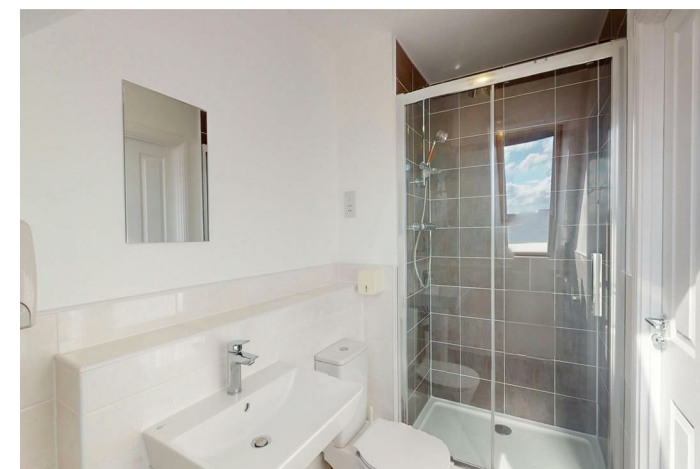
£1,450 Per Month

Modern 4 bedroom detached family home with south facing garden, in a quiet and private cul de sac which adjoins designated parkland. Located on a popular modern development on the west side of Shrewsbury, under 2 miles from the town centre, close to good schools, Royal Shrewsbury Hospital and various shopping complexes.

Available: Immediately

Description

Comprising: Covered entrance area to hall with built in storage and cloakroom, living room with glazed double doors to rear garden, separate kitchen/dining room with integrated appliances, seating area and bay window to front. Staircase from hall to first floor landing where there are three bedrooms and family bathroom including shower. Further staircase from first to second floor landing with built in storage and access to the very large main bedroom with dressing area and en suite shower room. Double glazed windows and gas fired central heating. Extensive block paved parking area to front and tarmac driveway to side which provides access to the single garage. South facing lawned rear garden with paved pathway. EPC B



Unfurnished

Council Tax Band: E

Available:

EPC: B

Floor Plans



These particulars, whilst believed to be accurate are set out as a general outline only for guidance and do not constitute any part of an offer or contract. Intending purchasers should not rely on them as statements of representation of fact, but must satisfy themselves by inspection or otherwise as to their accuracy. No person in this firm's employment has the authority to make or give any representation or warranty in respect of the property.