



INVERNESS TERRACE, W2

£1,100,000

Two double bedrooms
Share of freehold
Two bathrooms
Private garden
Vault storage
EPC - TBC

@marshandparsons
marshandparsons.co.uk

MARSH &
PARSONS

ABOUT THE PROPERTY

A well-presented two double bedroom garden flat set on the sought-after Inverness Terrace. The property is offered in excellent condition throughout and benefits from its own private garden.

Located at the sought-after Inverness Terrace, moments from Hyde Park, Westbourne Grove's boutiques, cafés and restaurants, with excellent transport links via Bayswater Underground Station nearby.





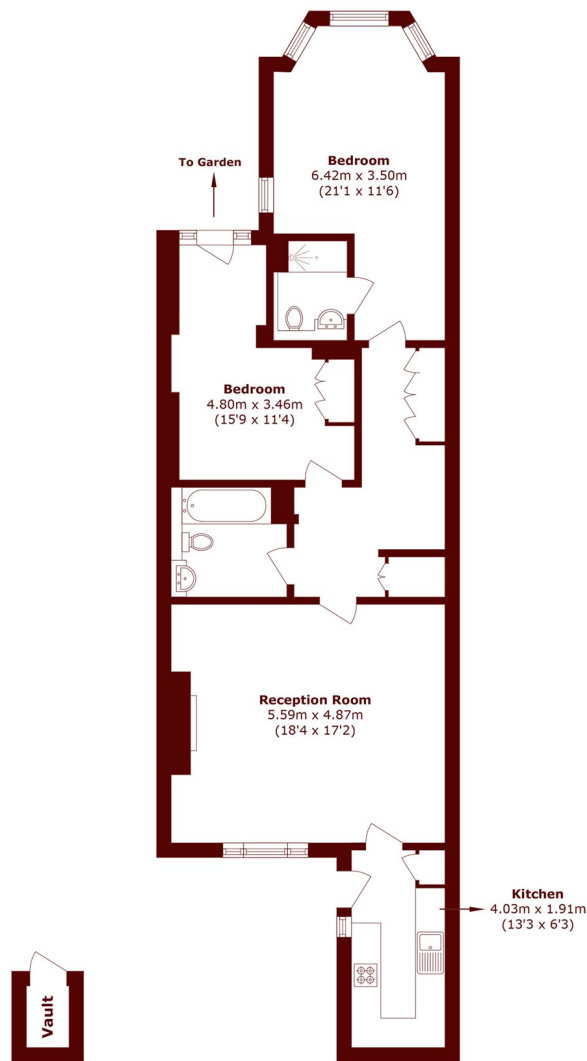


FURTHER DETAILS

A well-proportioned apartment extending to just under 1000 sqft, comprising a spacious reception room, separate kitchen, two generous double bedrooms, a family bathroom and an en-suite shower room. The principal bedroom enjoys direct access to a private garden, creating an excellent balance of indoor and outdoor living.



STEP INSIDE INVERNESS TERRACE



Lower Ground Floor Lower Ground Floor

Total area (approx.): 90.7 sq. m (976.2 sq. ft)

Vault area (approx.): 1.0 sq. m (10.7 sq. ft)

Notting Hill
020 7313 2890

Energy Rating: TBC We aim to make our particulars both accurate and reliable. However, they are not guaranteed; nor do they form part of an offer or contract. If you require clarification on any points then please contact us, especially if you're traveling some distance to view. Please note that appliances and heating systems have not been tested and therefore no warranties can be given as to their good working order

**MARSH &
PARSONS**