

Goldhawk Road, W12

£500,000

A boutique development of one and two bedroom apartments in Shepherd's Bush. These are newly renovated and finished to a high specification throughout.

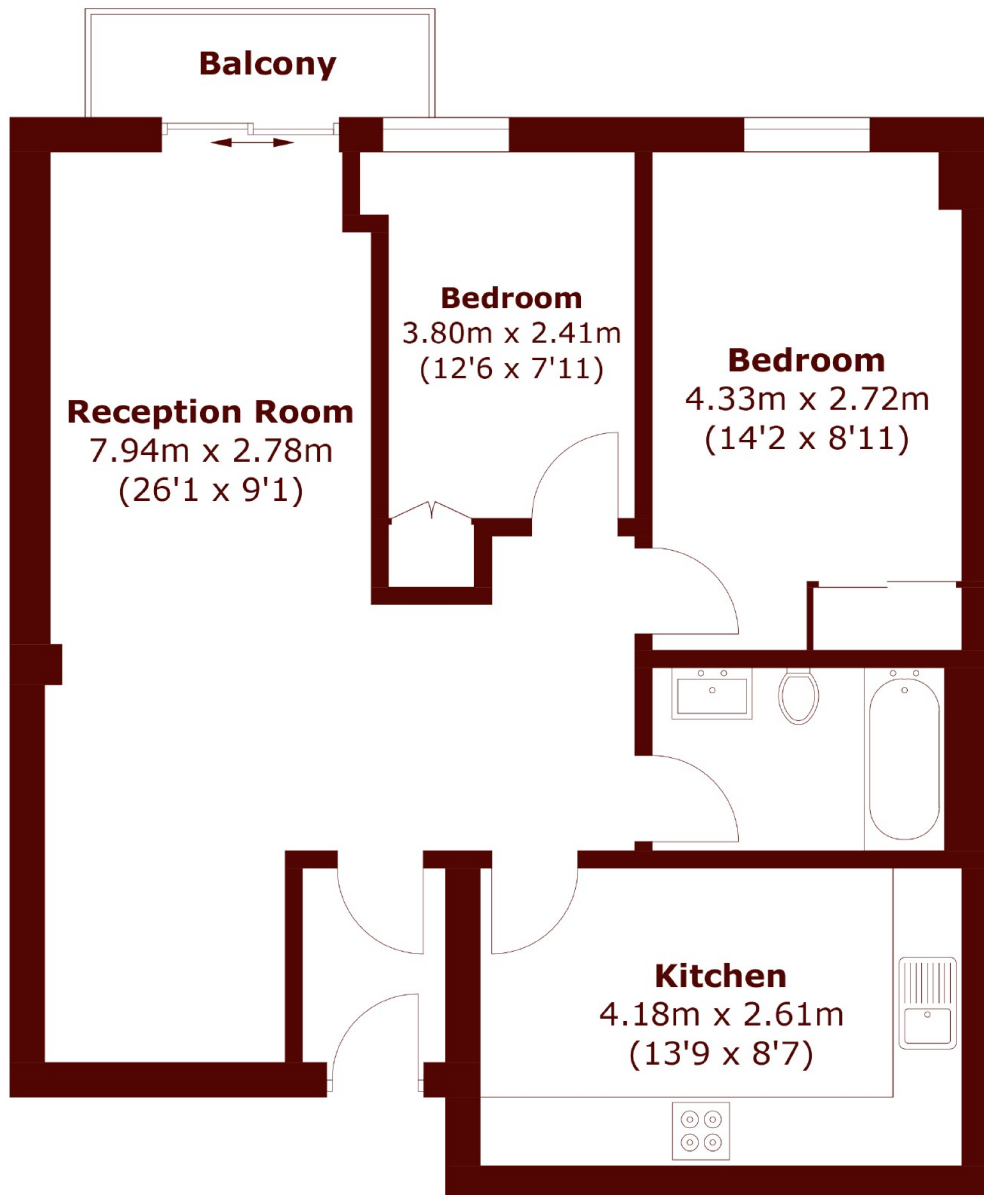
Designed with an integrated state of the art kitchen and appliances, this open plan apartment also benefits from a private terrace.

Only a stones throw from Westfield Shopping Centre, Goldhawk road boasts a variety of local amenities including bars, restaurants and convenience stores. Transport into Central London is a short walk away as are the cafes and restaurants of Brook Green

Features

- German Appliances
- Boutique apartments
- Private Terrace
- 10 minutes from Westfield
- Near To Ravenscourt Park
- Two bedroom apartment from £550,000

Goldhawk Road, London, W12



First Floor

Total area (approx.): 67.5 sq. m (726.6 sq. ft)
Balcony: 2.6 sq. m (27.9 sq. ft)