



The Clyde Collection

1, 2 & 3 bedroom apartments

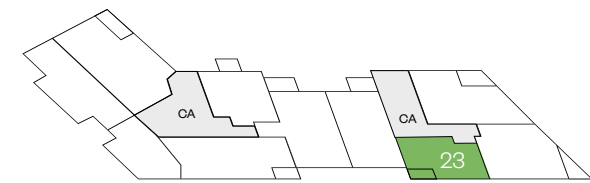


The Clyde Collection – Type 1C

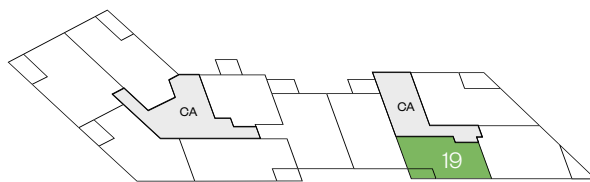
1 bedroom apartment

Plots 7, 11, 15, 19 & 23 – as shown

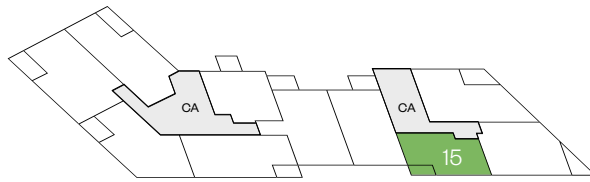
Total sq ft: 589 sq ft



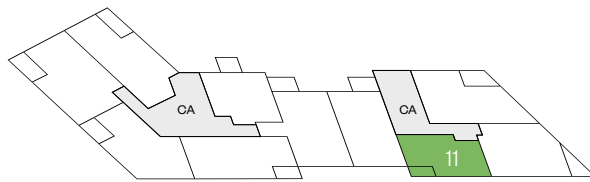
Fifth floor



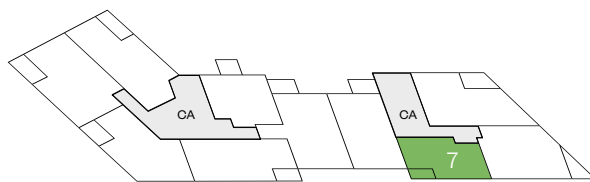
Fourth floor



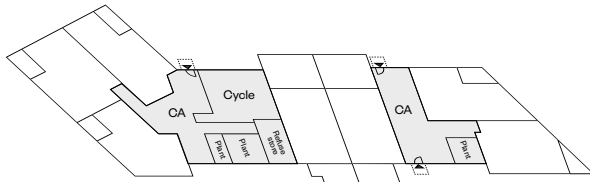
Third floor



Second floor

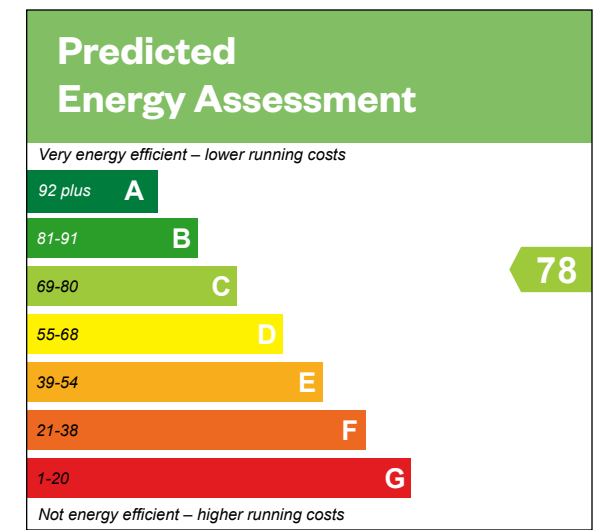
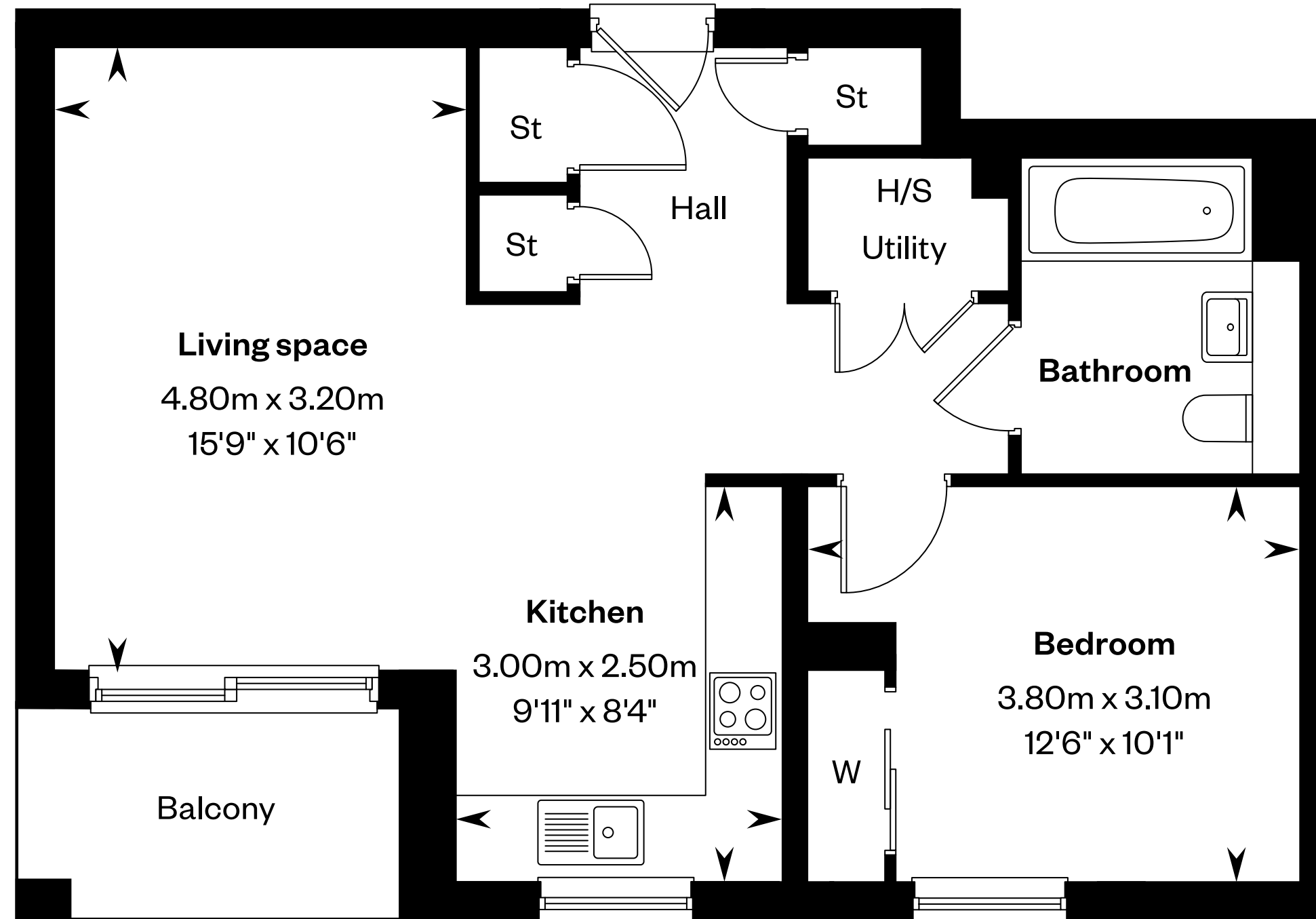


First floor



Ground floor

CA Communal area



This is a Predicted Energy Assessment for properties that are incomplete. Once the property is completed, this rating will be updated and an official Energy Performance certificate will be created for the property.

H/S: Heating source cupboard. St: Store cupboard. W: Wardrobe.

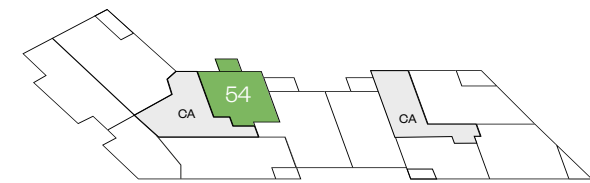
IMPORTANT NOTICE TO CUSTOMERS: The Consumer Protection from Unfair Trading Regulations 2008. Cala Homes (West) Limited operates a policy of continual product development and the specifications outlined in this brochure are indicative only. The computer generated images and photographs do not necessarily represent the actual finishings/elevation or treatments, landscaping, furnishings and fittings at this development. Information contained is accurate at date of publication on 25.02.26. See the main brochure for the full Consumer Protection statement.

The Clyde Collection – Type 11

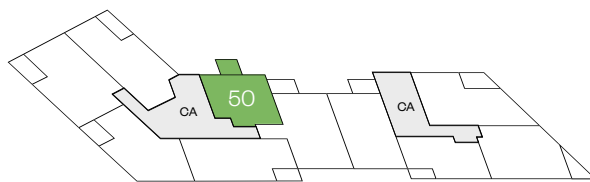
1 bedroom apartment

Plots 32, 38, 44, 50 & 54 – as shown

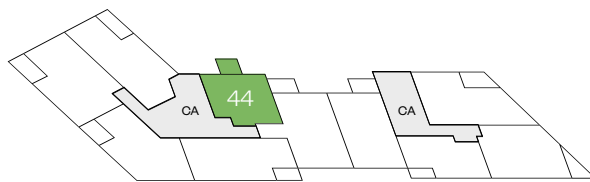
Total sq ft: 641 sq ft



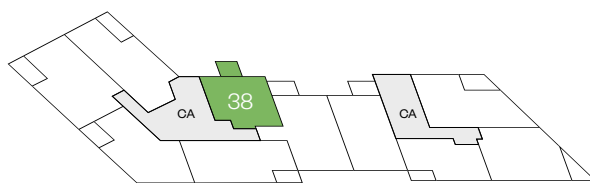
Fifth floor



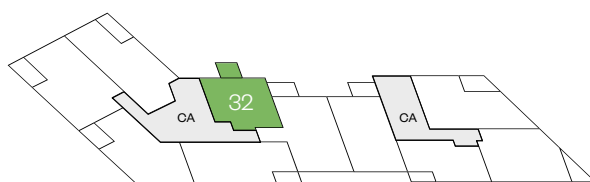
Fourth floor



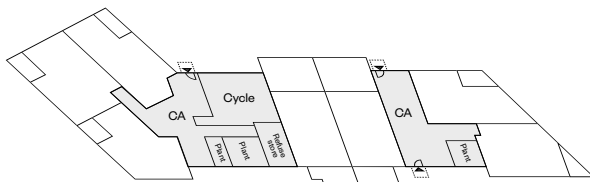
Third floor



Second floor

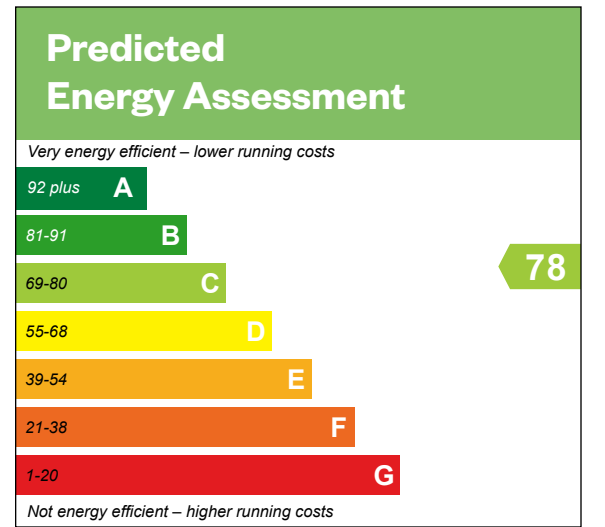
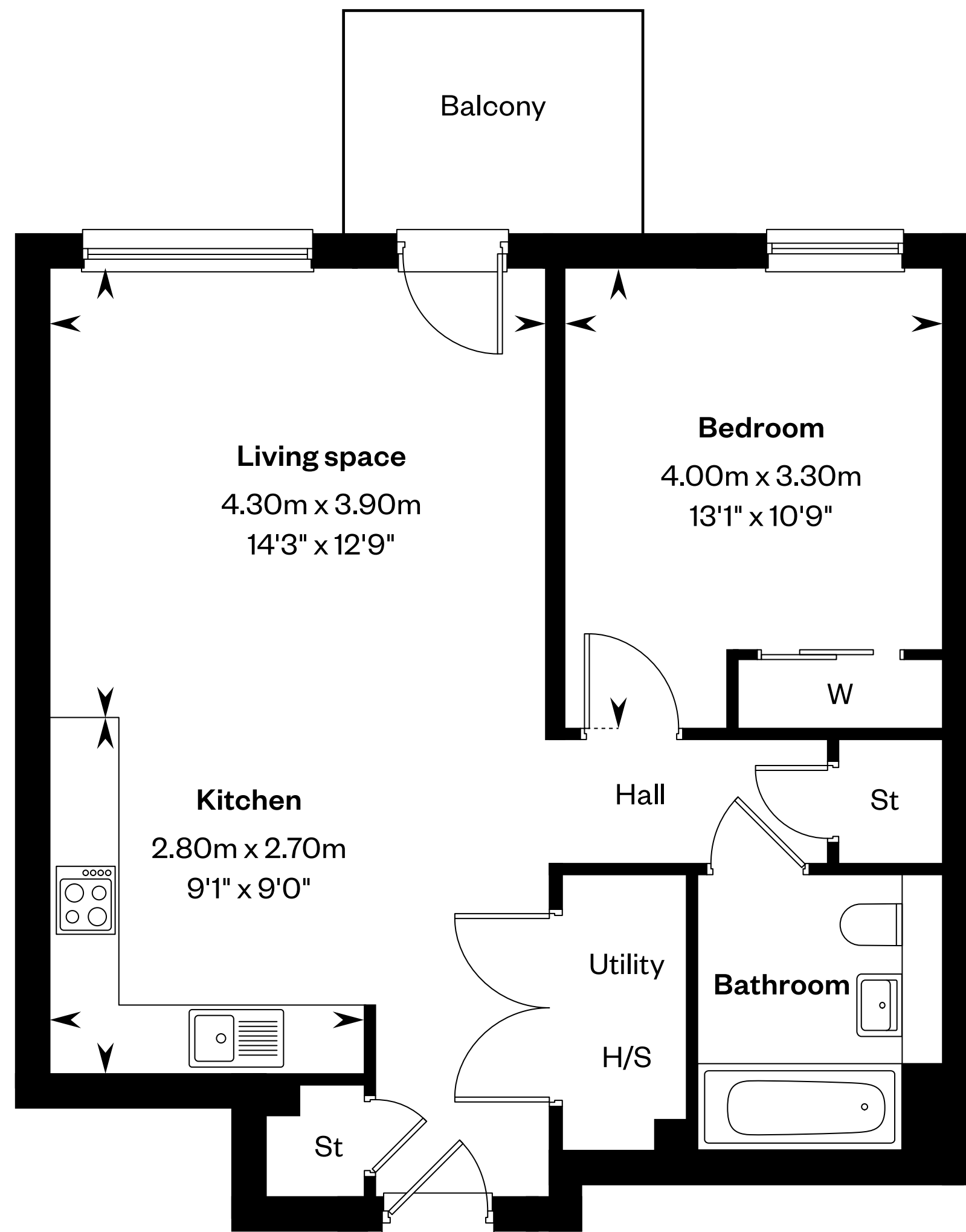


First floor



Ground floor

CA Communal area



This is a Predicted Energy Assessment for properties that are incomplete. Once the property is completed, this rating will be updated and an official Energy Performance certificate will be created for the property.

H/S: Heating source cupboard. St: Store cupboard. W: Wardrobe.

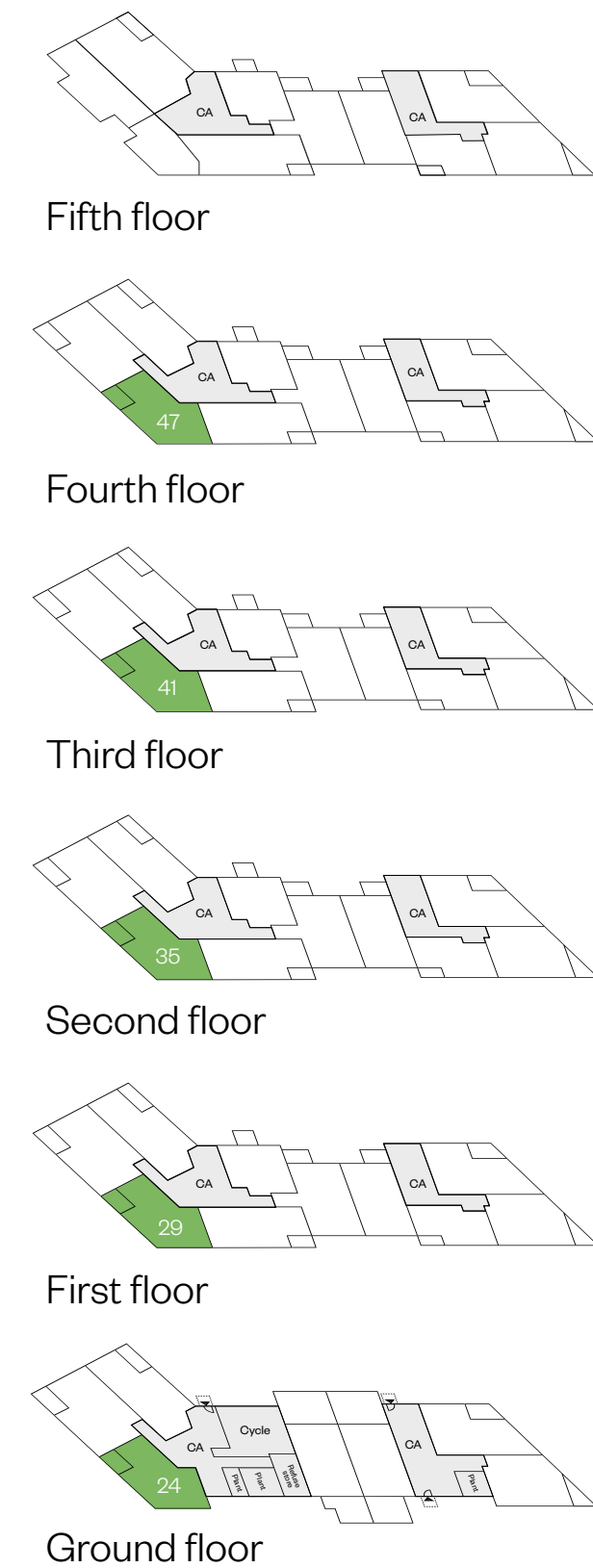
IMPORTANT NOTICE TO CUSTOMERS: The Consumer Protection from Unfair Trading Regulations 2008. Cala Homes (West) Limited operates a policy of continual product development and the specifications outlined in this brochure are indicative only. The computer generated images and photographs do not necessarily represent the actual finishings/elevation or treatments, landscaping, furnishings and fittings at this development. Information contained is accurate at date of publication on 25.02.26. See the main brochure for the full Consumer Protection statement.

The Clyde Collection – Type 2F

2 bedroom apartment

Plots 24, 29, 35, 41 & 47 – as shown

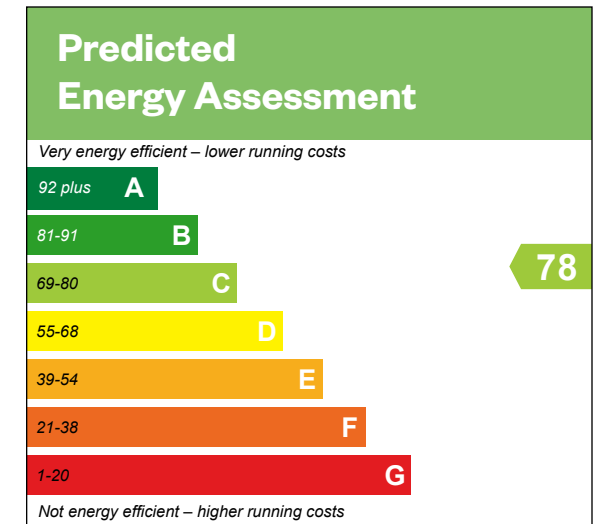
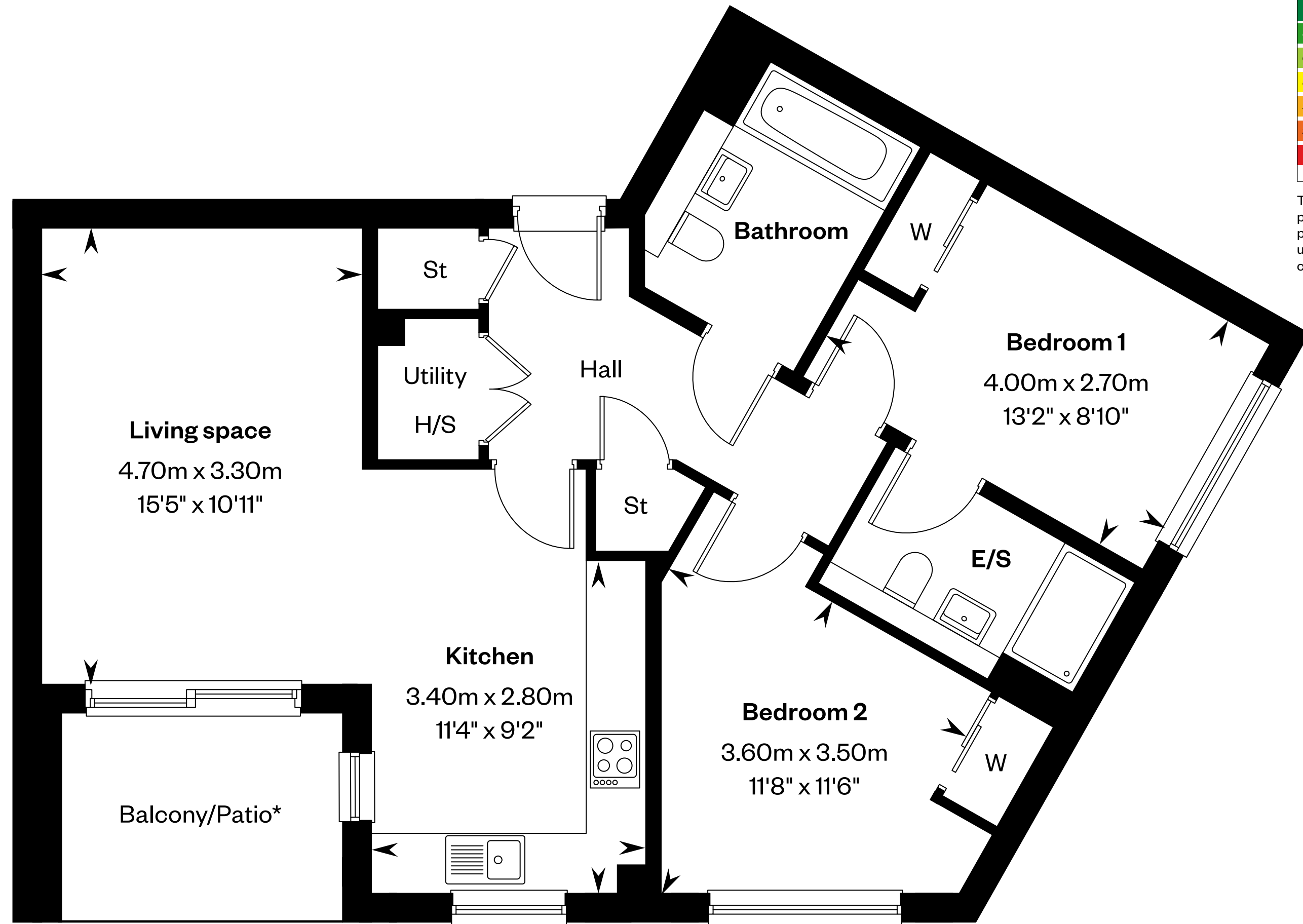
Total sq ft: 801 sq ft



CA Communal area

*Patio to plot 24 & Balcony to 29, 35, 41, 47

E/S: En-Suite. H/S: Heating source cupboard. St: Store cupboard. W: Wardrobe.



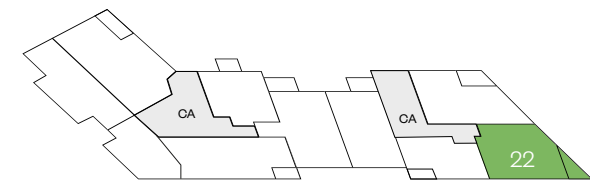
This is a Predicted Energy Assessment for properties that are incomplete. Once the property is completed, this rating will be updated and an official Energy Performance certificate will be created for the property.

The Clyde Collection – Type 2I

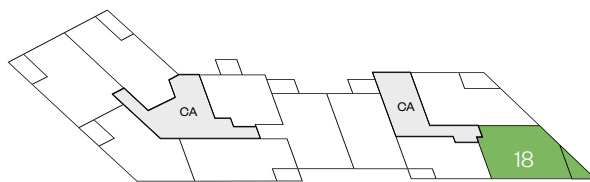
2 bedroom apartment

Plots 3, 6, 10, 14, 18 & 22 – as shown

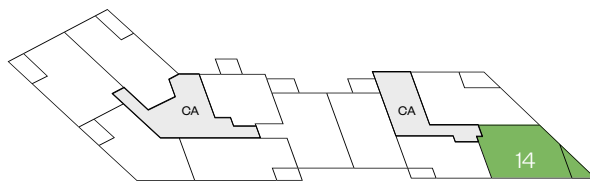
Total sq ft: 824 sq ft



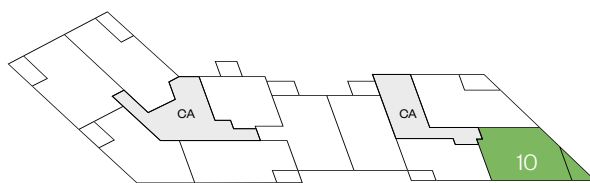
Fifth floor



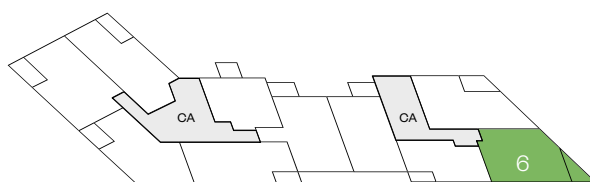
Fourth floor



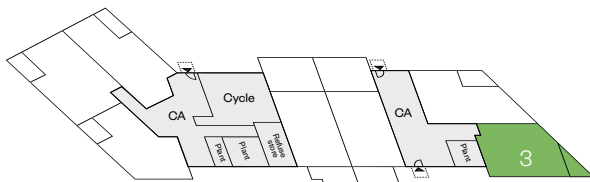
Third floor



Second floor



First floor

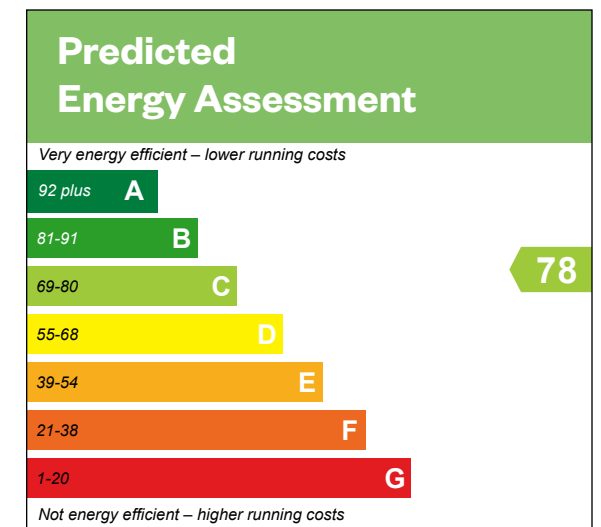
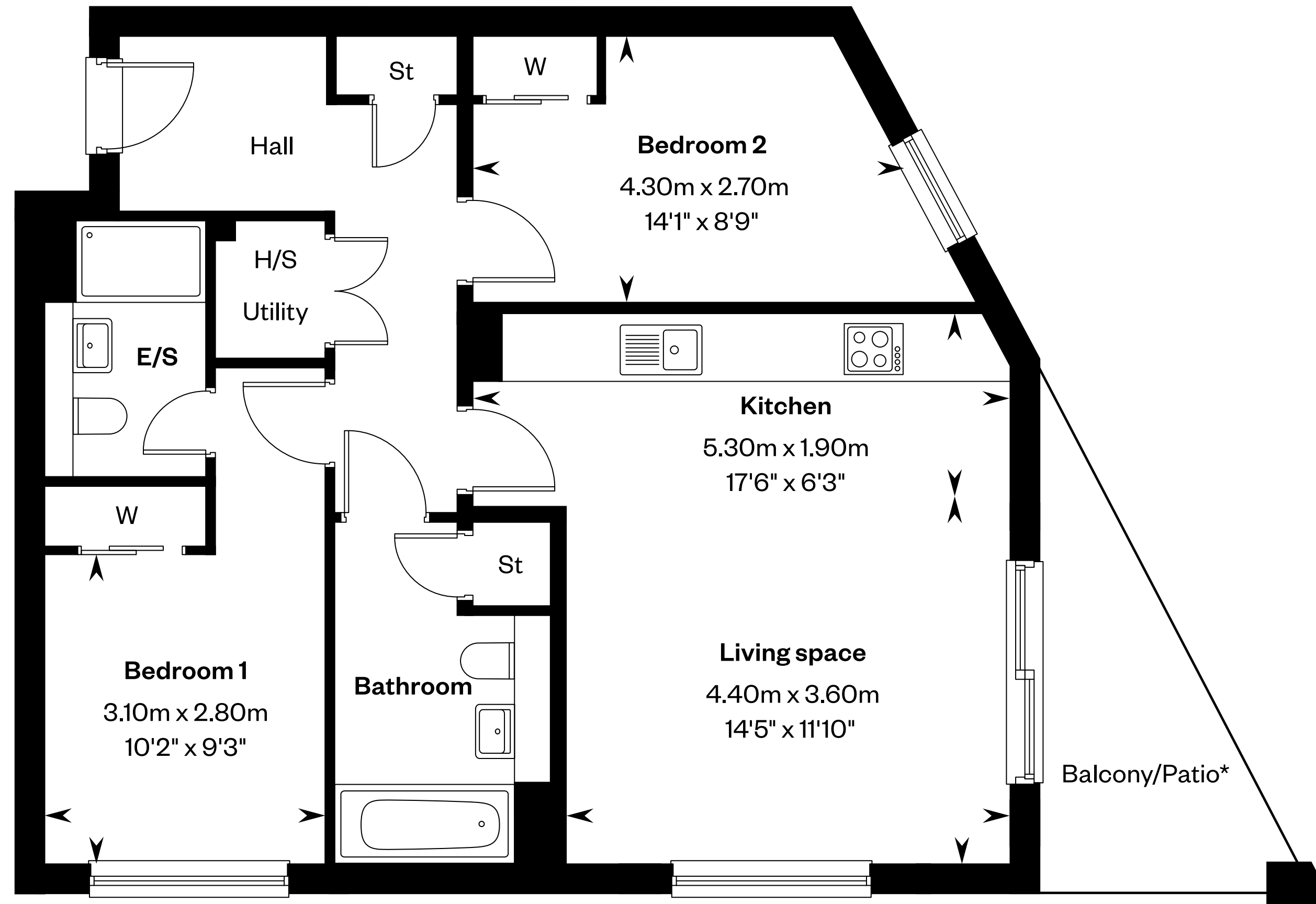


Ground floor

CA Communal area

*Patio to plot 3 & Balcony to plots 6, 10, 14, 18, 22

E/S: En-Suite. H/S: Heating source cupboard. St: Store cupboard. W: Wardrobe.



This is a Predicted Energy Assessment for properties that are incomplete. Once the property is completed, this rating will be updated and an official Energy Performance certificate will be created for the property.

IMPORTANT NOTICE TO CUSTOMERS: The Consumer Protection from Unfair Trading Regulations 2008. Cala Homes (West) Limited operates a policy of continual product development and the specifications outlined in this brochure are indicative only. The computer generated images and photographs do not necessarily represent the actual finishings/elevation or treatments, landscaping, furnishings and fittings at this development. Information contained is accurate at date of publication on 25.02.26. See the main brochure for the full Consumer Protection statement.

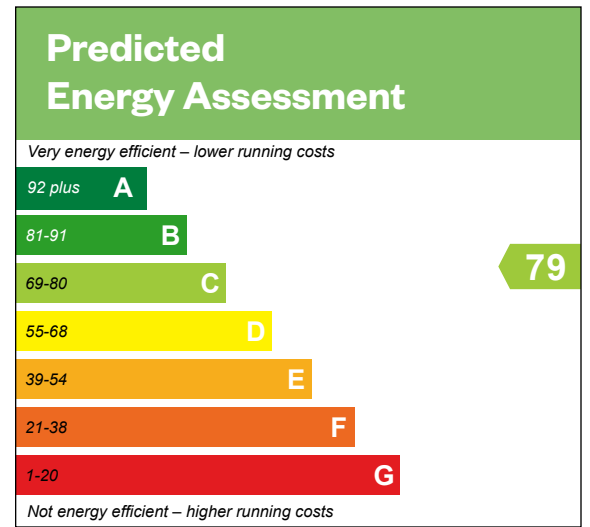
The Clyde Collection – Type 2J

2 bedroom apartment

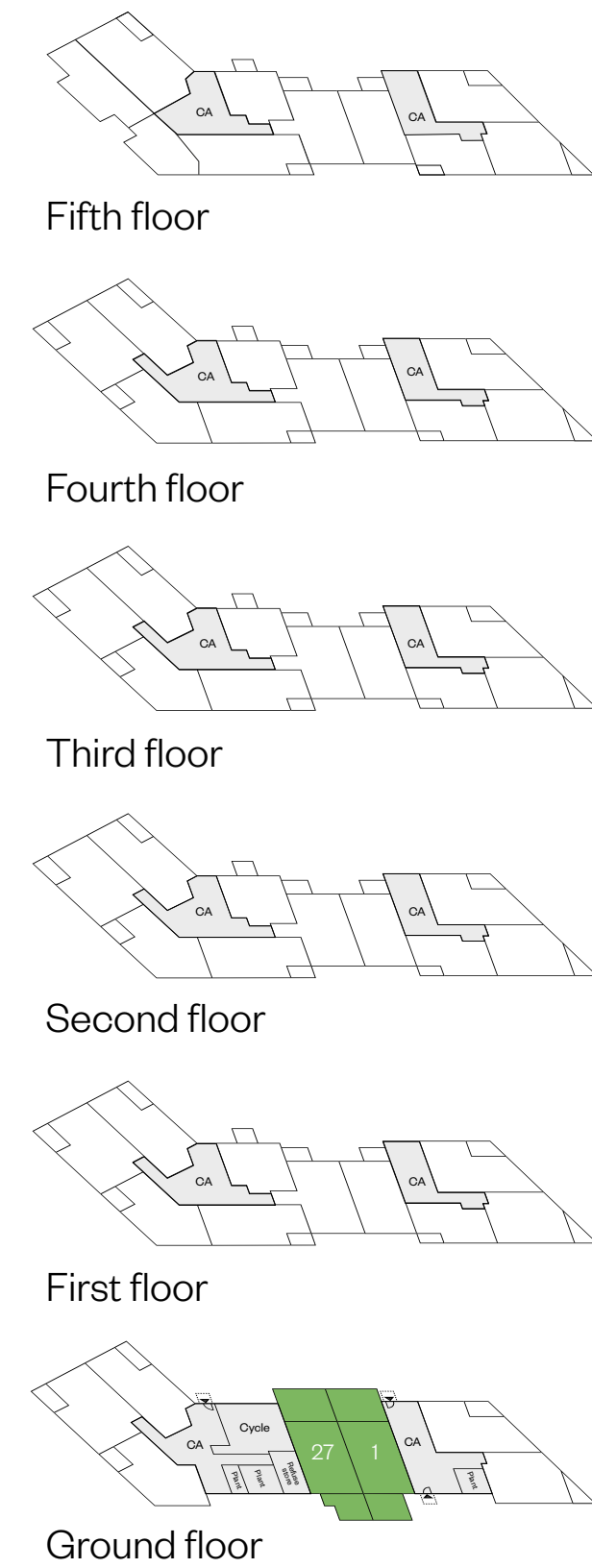
Plot 1 – handed

Plot 27 – as shown

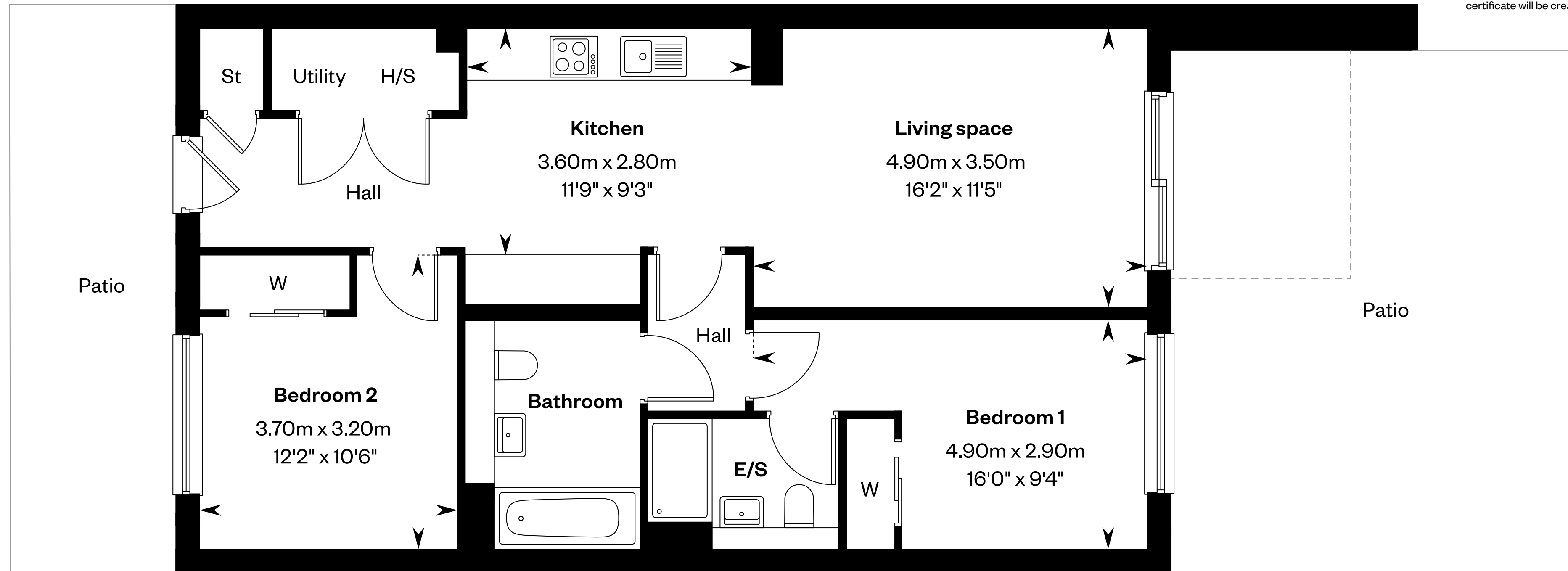
Total sq ft: 829 sq ft



This is a Predicted Energy Assessment for properties that are incomplete. Once the property is completed, this rating will be updated and an official Energy Performance certificate will be created for the property.



CA Communal area



E/S: En-Suite. H/S: Heating source cupboard. St: Store cupboard. W: Wardrobe.

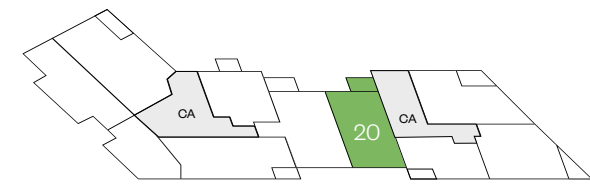
IMPORTANT NOTICE TO CUSTOMERS: The Consumer Protection from Unfair Trading Regulations 2008. Cala Homes (West) Limited operates a policy of continual product development and the specifications outlined in this brochure are indicative only. The computer generated images and photographs do not necessarily represent the actual finishings/elevation or treatments, landscaping, furnishings and fittings at this development. Information contained is accurate at date of publication on 25.02.26. See the main brochure for the full Consumer Protection statement.

The Clyde Collection – Type 2M

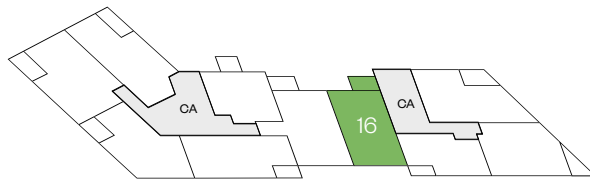
2 bedroom apartment

Plots 4, 8, 12, 16 & 20 – as shown

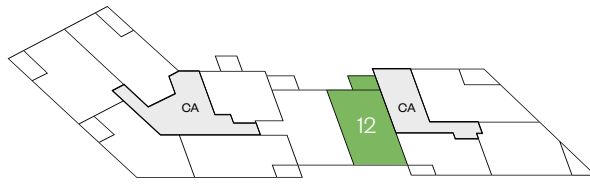
Total sq ft: 830 sq ft



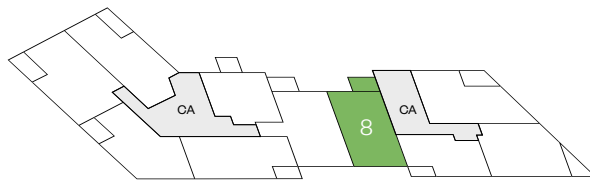
Fifth floor



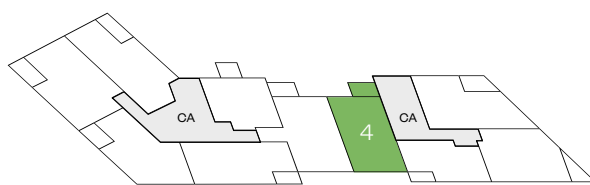
Fourth floor



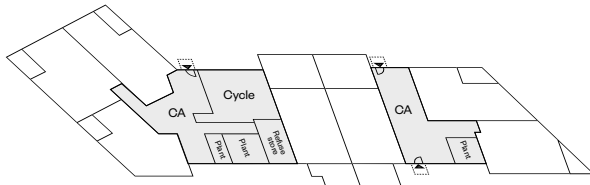
Third floor



Second floor

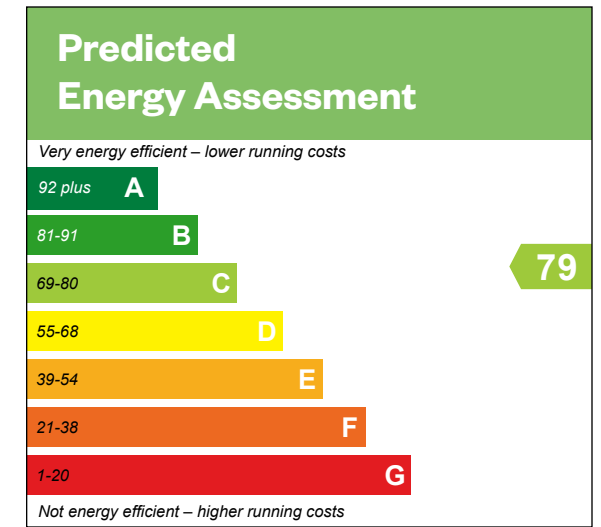
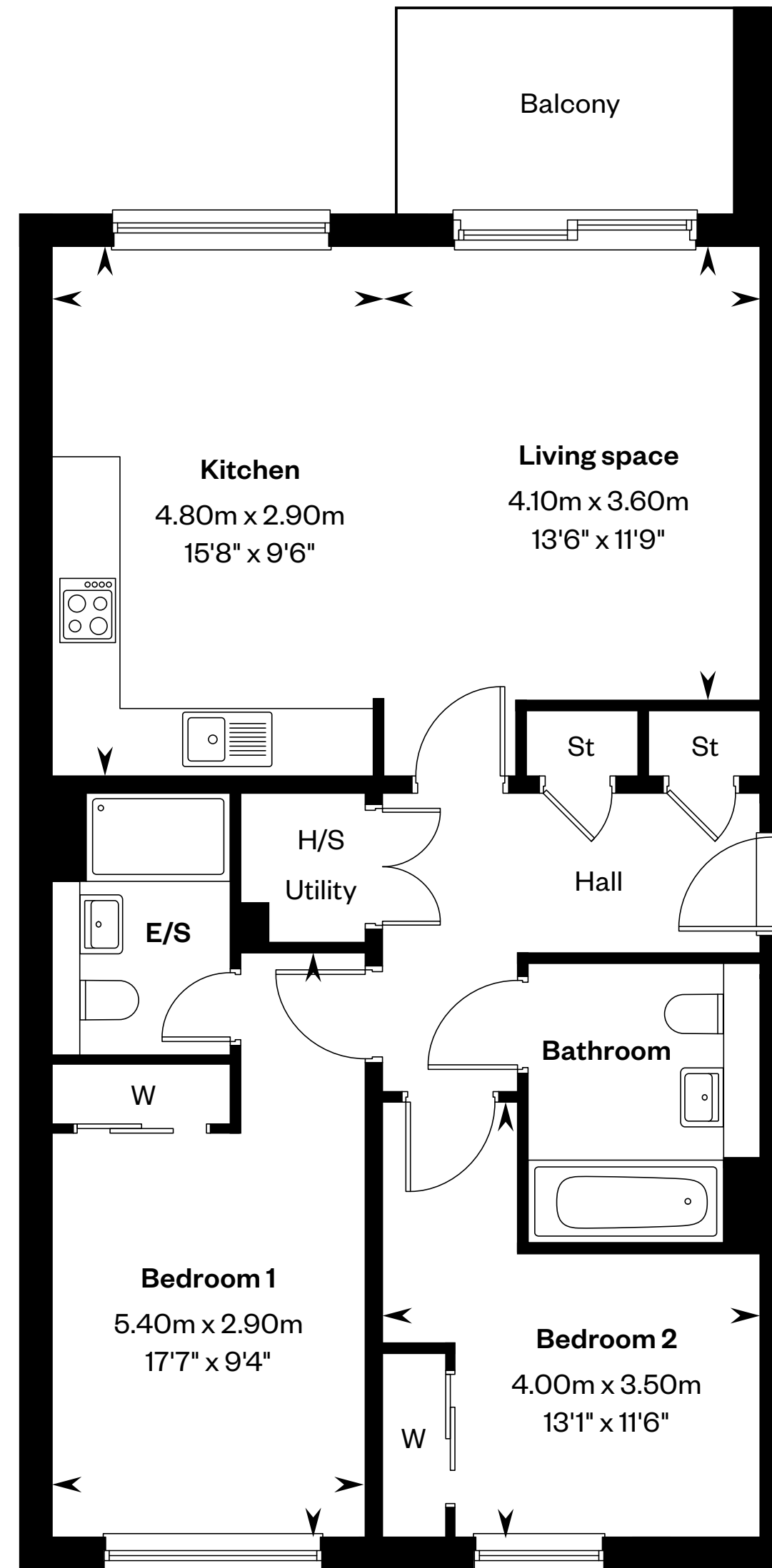


First floor



Ground floor

CA Communal area



This is a Predicted Energy Assessment for properties that are incomplete. Once the property is completed, this rating will be updated and an official Energy Performance certificate will be created for the property.

E/S: En-Suite. H/S: Heating source cupboard. St: Store cupboard. W: Wardrobe.

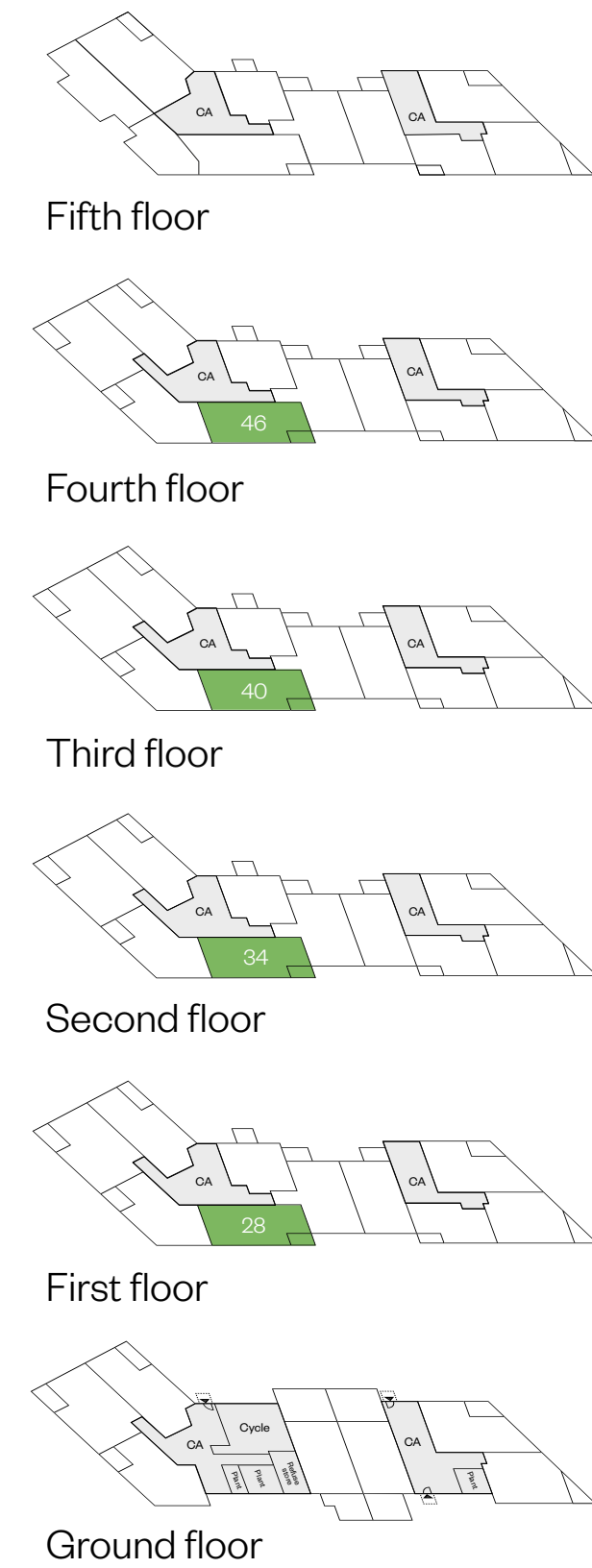
IMPORTANT NOTICE TO CUSTOMERS: The Consumer Protection from Unfair Trading Regulations 2008. Cala Homes (West) Limited operates a policy of continual product development and the specifications outlined in this brochure are indicative only. The computer generated images and photographs do not necessarily represent the actual finishings/elevation or treatments, landscaping, furnishings and fittings at this development. Information contained is accurate at date of publication on 25.02.26. See the main brochure for the full Consumer Protection statement.

The Clyde Collection – Type 2Q

2 bedroom apartment

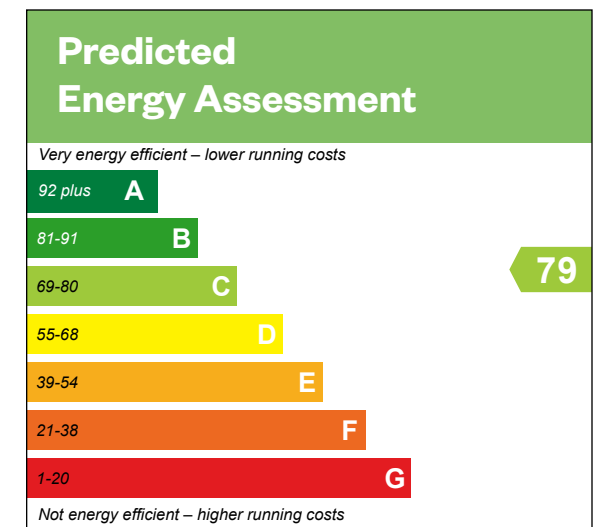
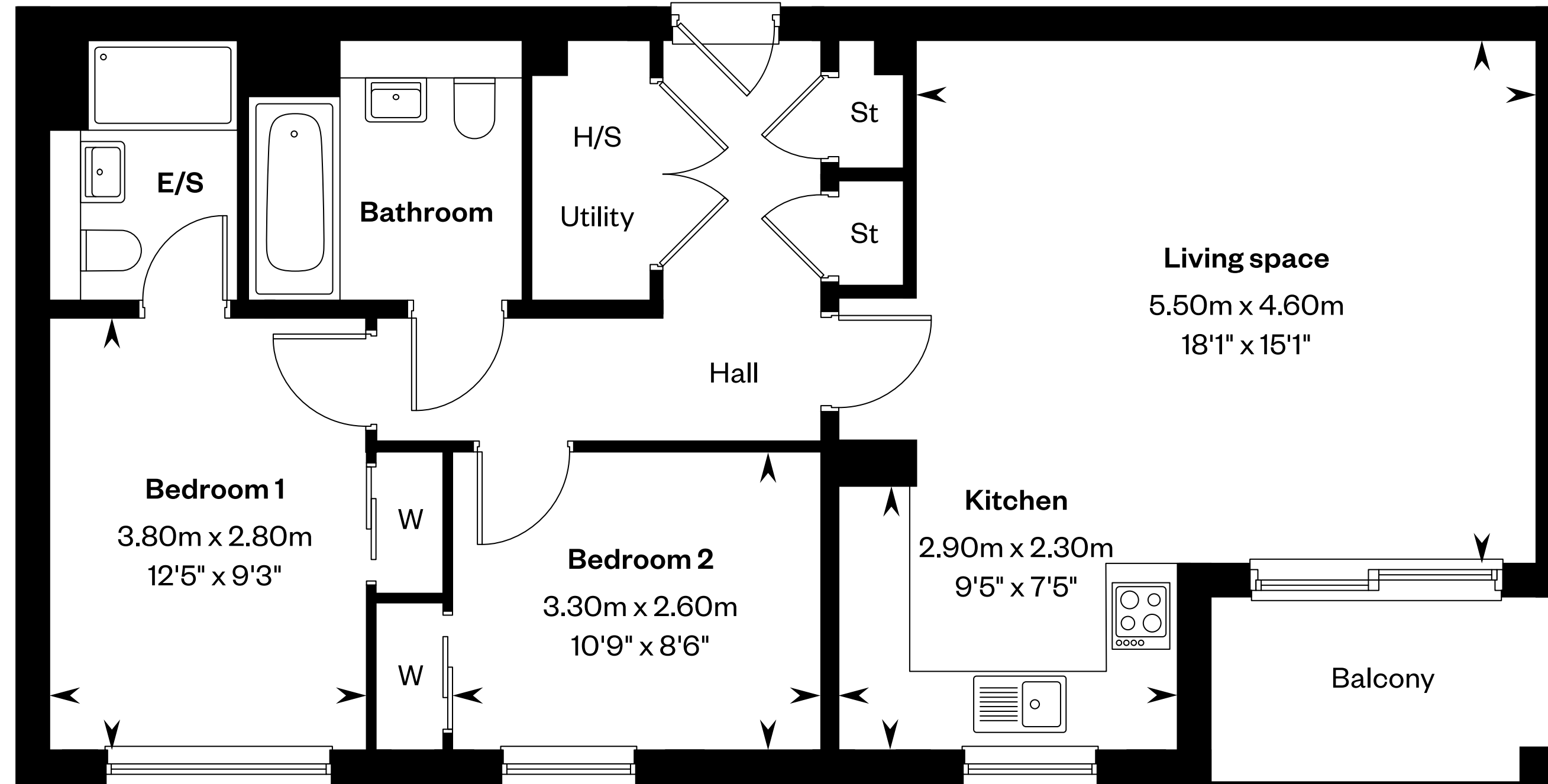
Plots 28, 34, 40 & 46 – as shown

Total sq ft: 836 sq ft



CA Communal area

E/S: En-Suite. H/S: Heating source cupboard. St: Store cupboard. W: Wardrobe.



This is a Predicted Energy Assessment for properties that are incomplete. Once the property is completed, this rating will be updated and an official Energy Performance certificate will be created for the property.

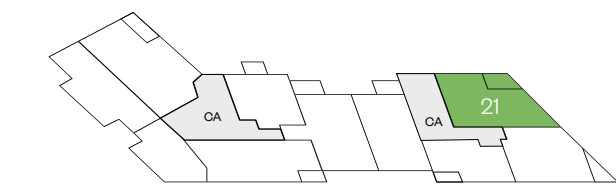
IMPORTANT NOTICE TO CUSTOMERS: The Consumer Protection from Unfair Trading Regulations 2008. Cala Homes (West) Limited operates a policy of continual product development and the specifications outlined in this brochure are indicative only. The computer generated images and photographs do not necessarily represent the actual finishings/elevation or treatments, landscaping, furnishings and fittings at this development. Information contained is accurate at date of publication on 25.02.26. See the main brochure for the full Consumer Protection statement.

The Clyde Collection – Type 2V

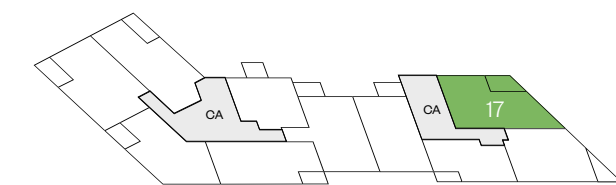
2 bedroom apartment

Plots 2, 5, 9, 13, 17 & 21 – as shown

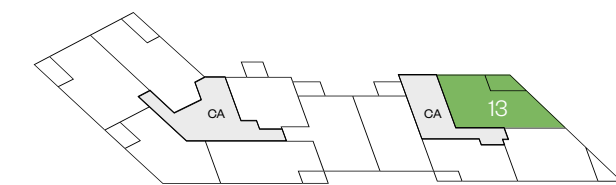
Total sq ft: 860 sq ft



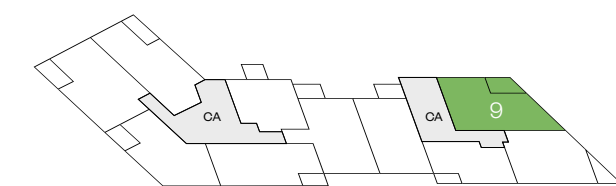
Fifth floor



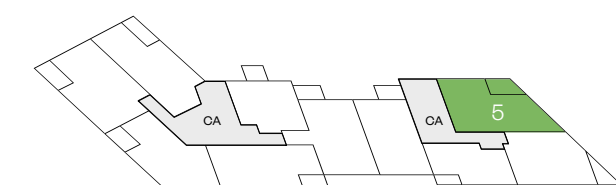
Fourth floor



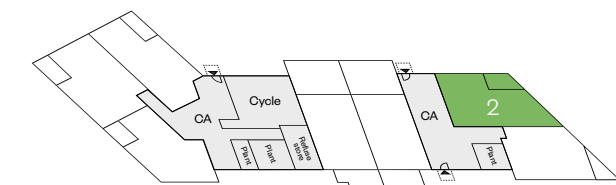
Third floor



Second floor



First floor

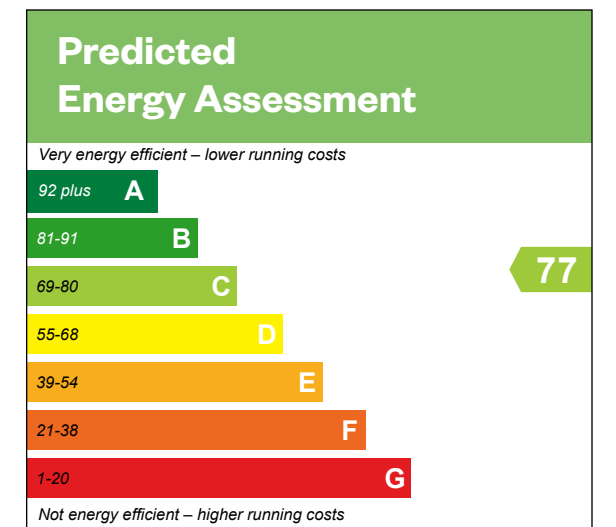
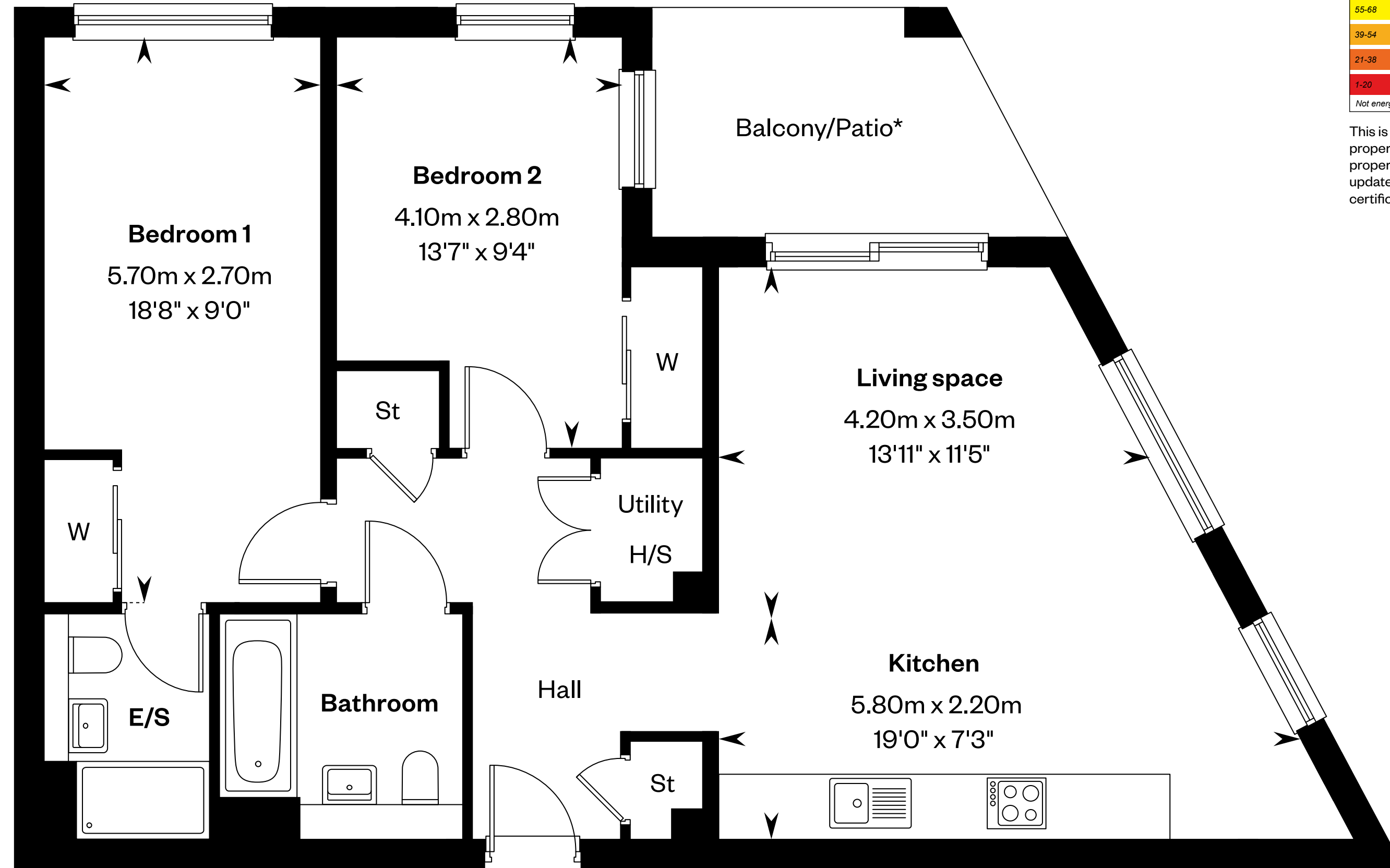


Ground floor

CA Communal area

*Patio to plot 2 & Balcony to plots 5, 9, 13, 17, 21

E/S: En-Suite. H/S: Heating source cupboard. St: Store cupboard. W: Wardrobe.



This is a Predicted Energy Assessment for properties that are incomplete. Once the property is completed, this rating will be updated and an official Energy Performance certificate will be created for the property.

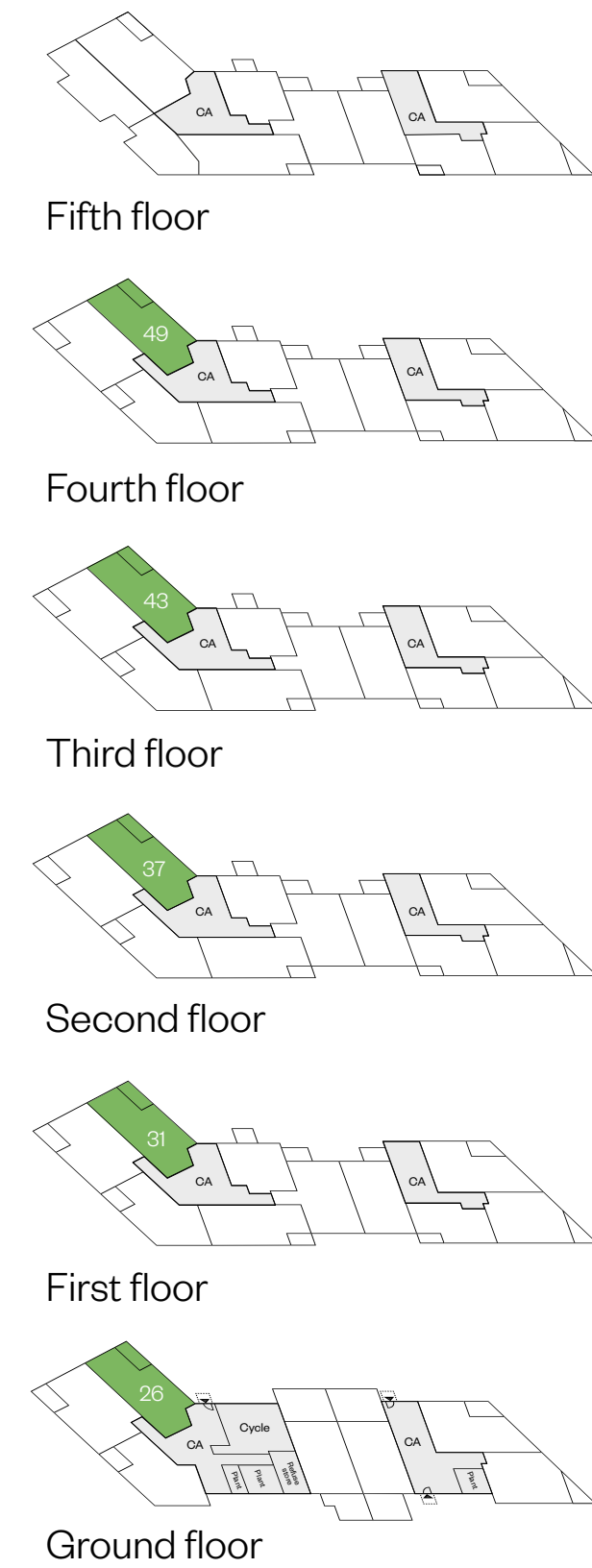
IMPORTANT NOTICE TO CUSTOMERS: The Consumer Protection from Unfair Trading Regulations 2008. Cala Homes (West) Limited operates a policy of continual product development and the specifications outlined in this brochure are indicative only. The computer generated images and photographs do not necessarily represent the actual finishings/elevation or treatments, landscaping, furnishings and fittings at this development. Information contained is accurate at date of publication on 25.02.26. See the main brochure for the full Consumer Protection statement.

The Clyde Collection – Type 2W

2 bedroom apartment

Plots 26, 31, 37, 43 & 49 – as shown

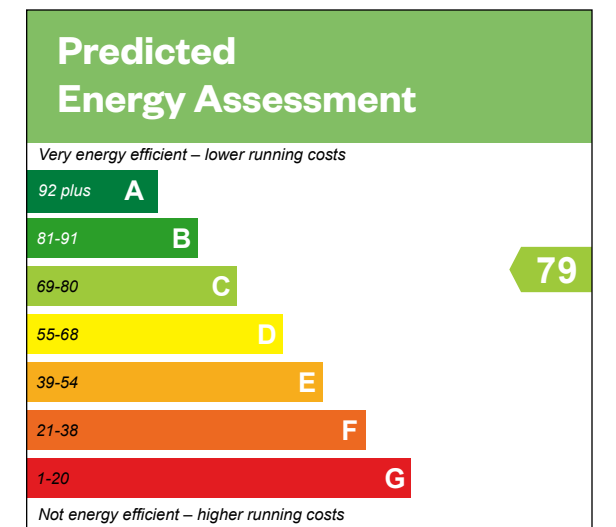
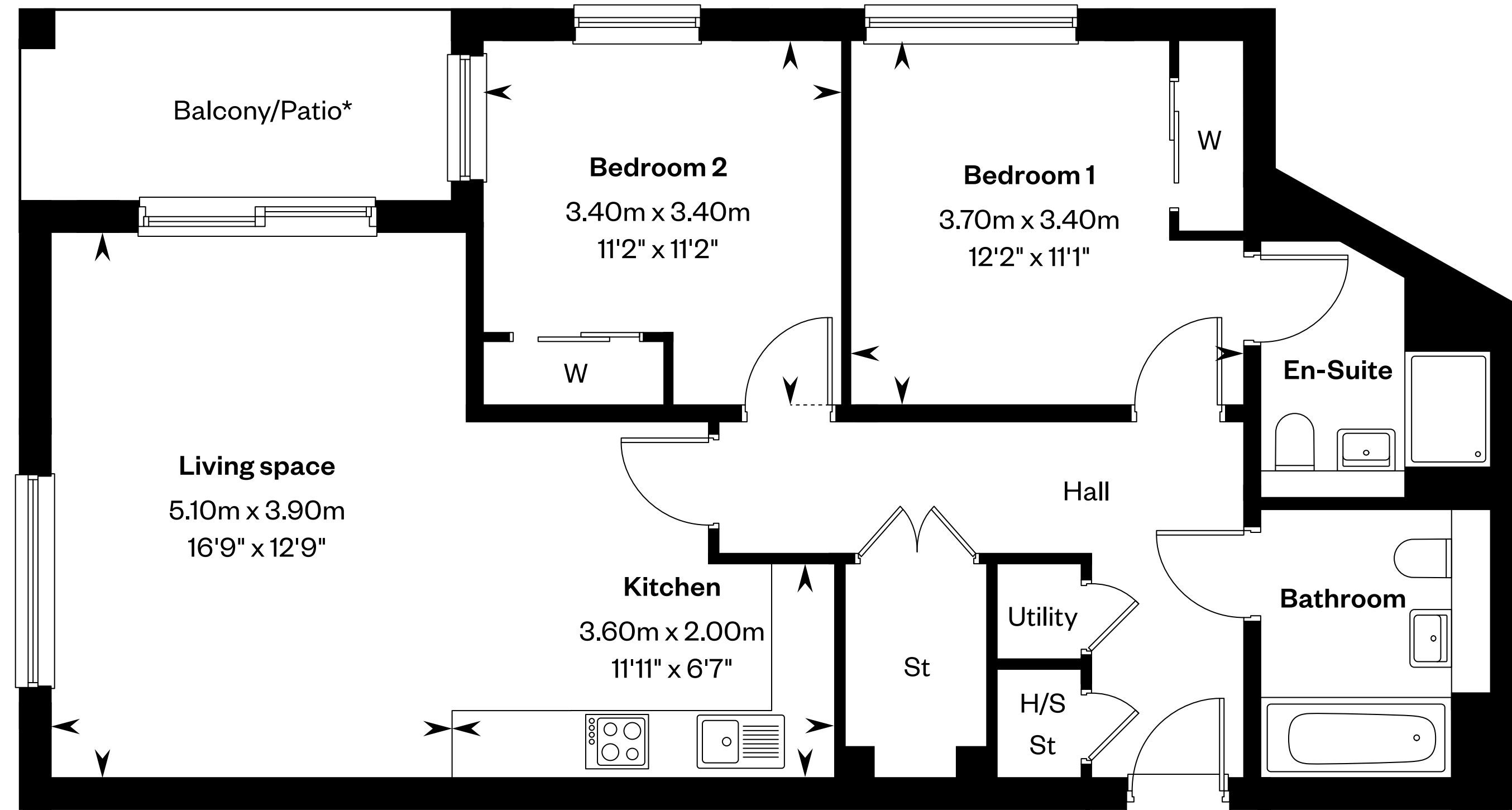
Total sq ft: 880 sq ft



CA Communal area

*Patio to plot 26 & Balcony to 31, 37, 43, 49

H/S: Heating source cupboard. St: Store cupboard. W: Wardrobe.



This is a Predicted Energy Assessment for properties that are incomplete. Once the property is completed, this rating will be updated and an official Energy Performance certificate will be created for the property.

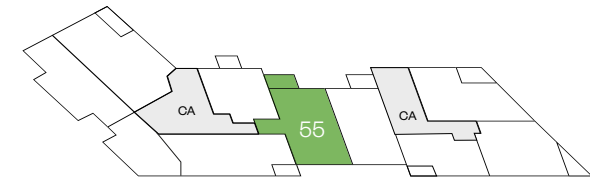
IMPORTANT NOTICE TO CUSTOMERS: The Consumer Protection from Unfair Trading Regulations 2008. Cala Homes (West) Limited operates a policy of continual product development and the specifications outlined in this brochure are indicative only. The computer generated images and photographs do not necessarily represent the actual finishings/elevation or treatments, landscaping, furnishings and fittings at this development. Information contained is accurate at date of publication on 25.02.26. See the main brochure for the full Consumer Protection statement.

The Clyde Collection – Type 2Y

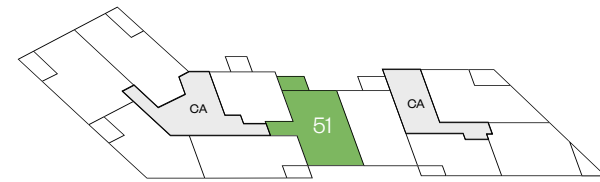
2 bedroom apartment

Plots 33, 39, 45, 51 & 55 – as shown

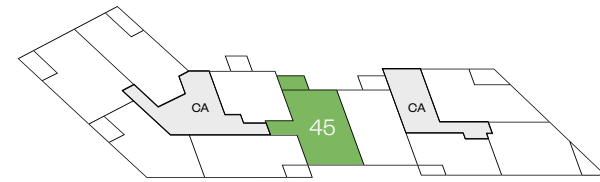
Total sq ft: 902 sq ft



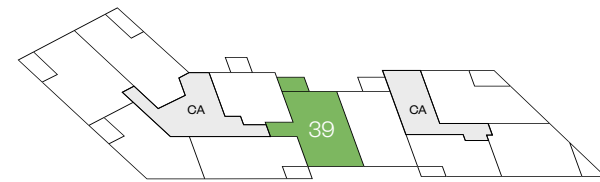
Fifth floor



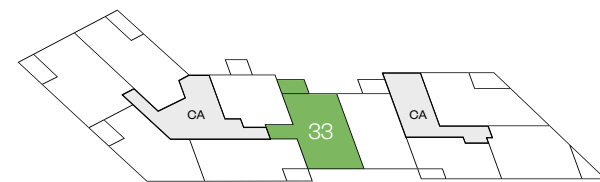
Fourth floor



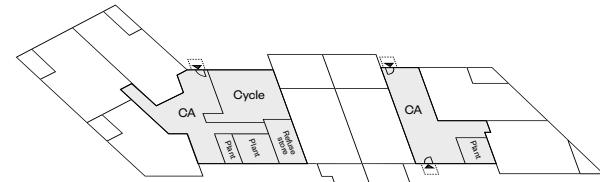
Third floor



Second floor

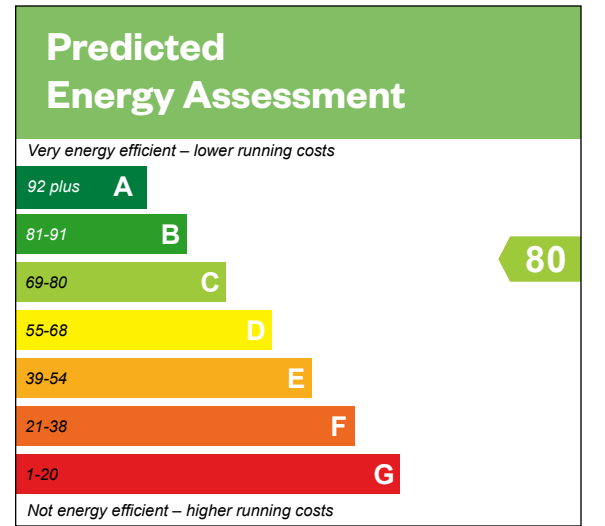
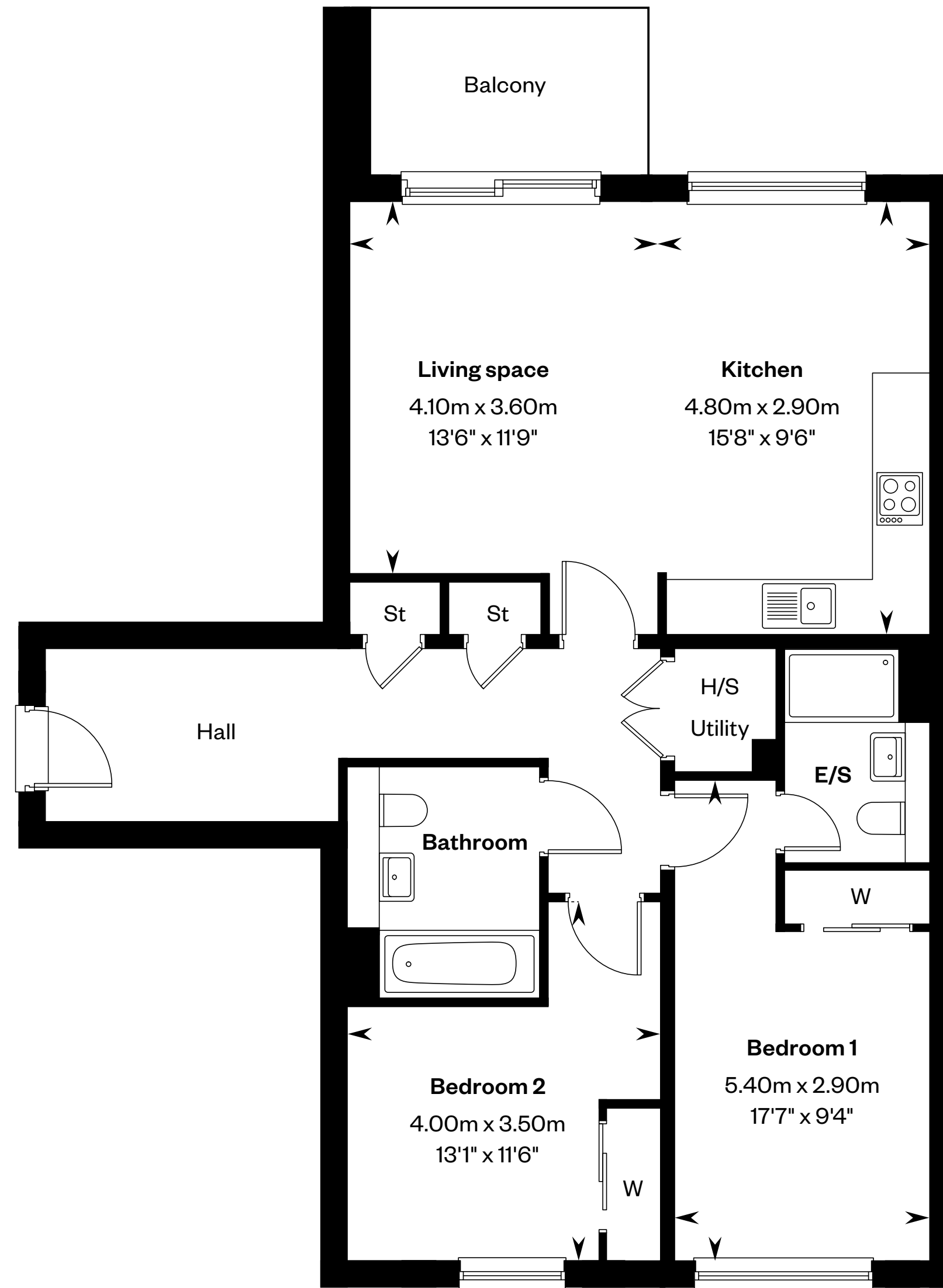


First floor



Ground floor

CA Communal area



This is a Predicted Energy Assessment for properties that are incomplete. Once the property is completed, this rating will be updated and an official Energy Performance certificate will be created for the property.

E/S: En-Suite. H/S: Heating source cupboard. St: Store cupboard. W: Wardrobe.

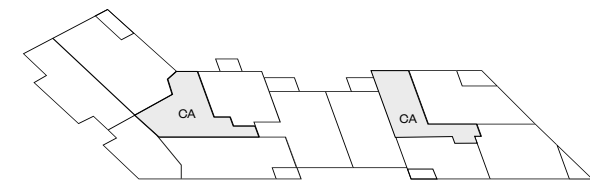
IMPORTANT NOTICE TO CUSTOMERS: The Consumer Protection from Unfair Trading Regulations 2008. Cala Homes (West) Limited operates a policy of continual product development and the specifications outlined in this brochure are indicative only. The computer generated images and photographs do not necessarily represent the actual finishings/elevation or treatments, landscaping, furnishings and fittings at this development. Information contained is accurate at date of publication on 25.02.26. See the main brochure for the full Consumer Protection statement.

Type 3A

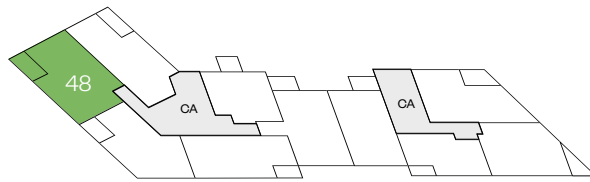
3 bedroom apartment

Plots 25, 30, 36, 42 & 48 – as shown

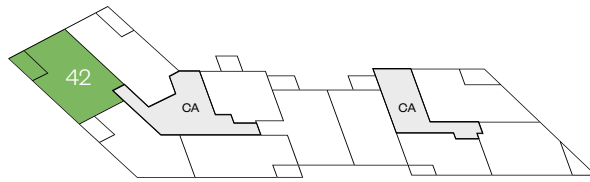
Total sq ft: 945 sq ft



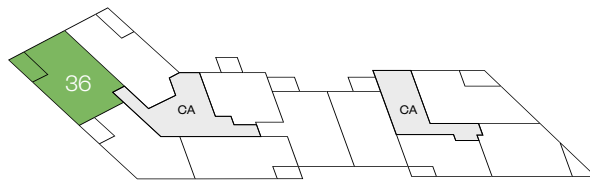
Fifth floor



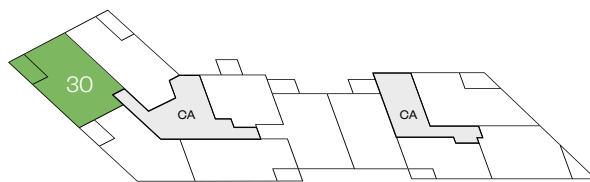
Fourth floor



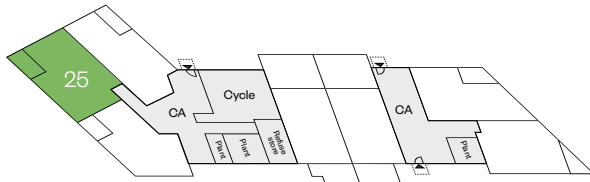
Third floor



Second floor



First floor

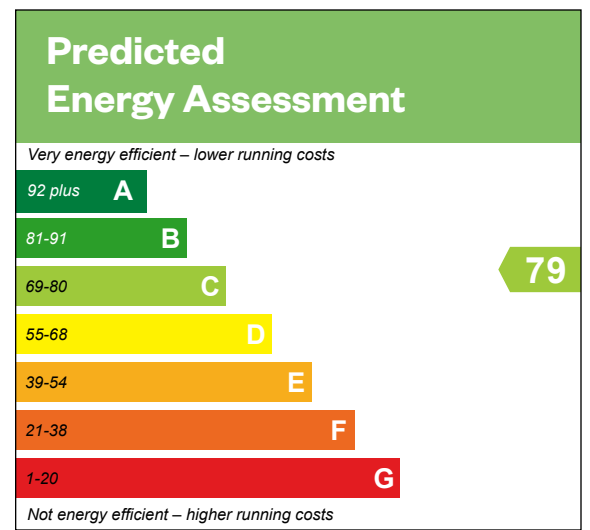
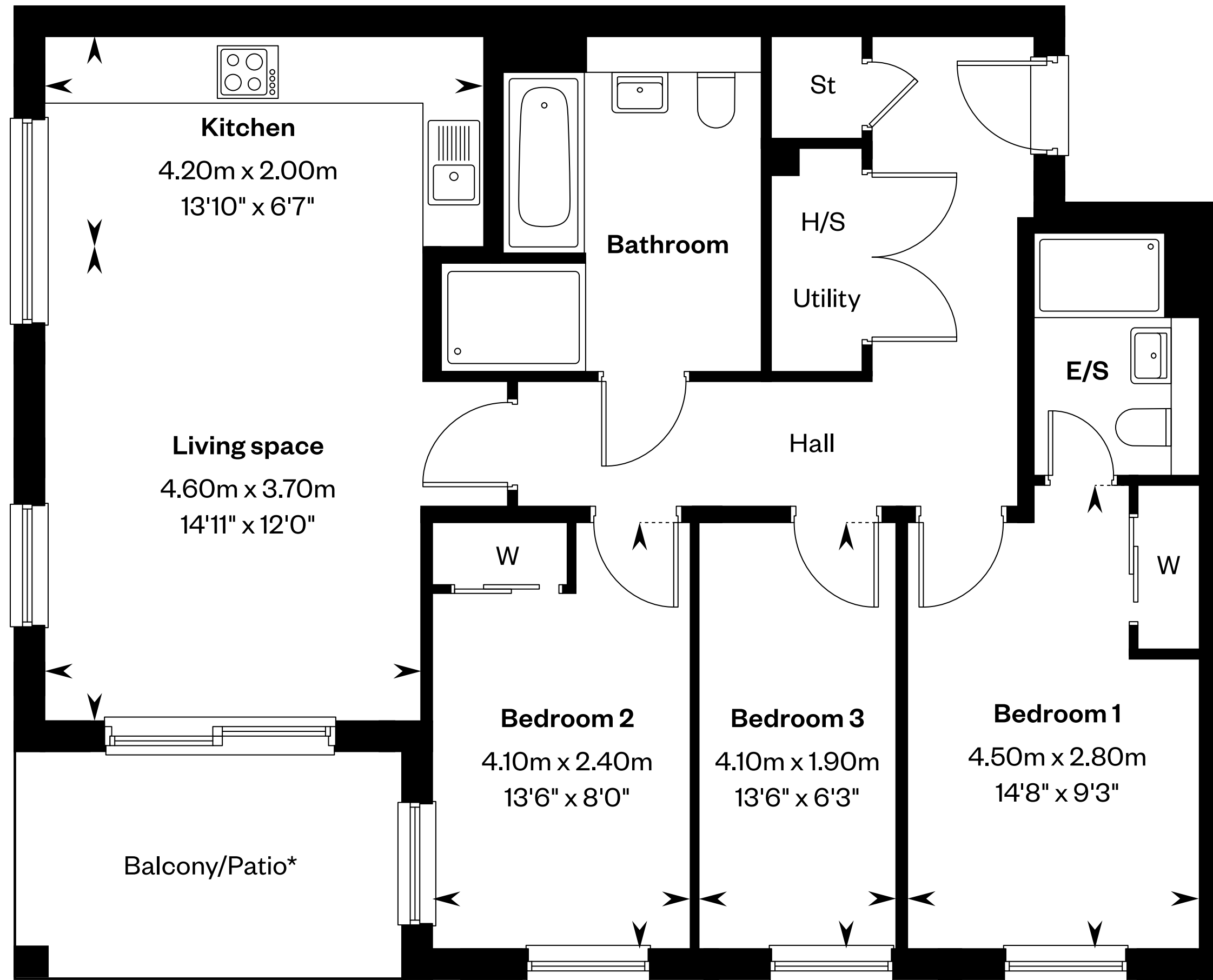


Ground floor

CA Communal area

*Patio to plot 25 & Balcony to plots 30, 36, 42, 48

E/S: En-Suite. H/S: Heating source cupboard. St: Store cupboard. W: Wardrobe.



This is a Predicted Energy Assessment for properties that are incomplete. Once the property is completed, this rating will be updated and an official Energy Performance certificate will be created for the property.

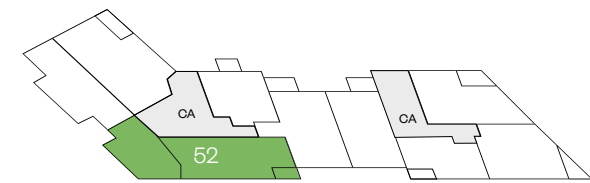
IMPORTANT NOTICE TO CUSTOMERS: The Consumer Protection from Unfair Trading Regulations 2008. Cala Homes (West) Limited operates a policy of continual product development and the specifications outlined in this brochure are indicative only. The computer generated images and photographs do not necessarily represent the actual finishings/elevation or treatments, landscaping, furnishings and fittings at this development. Information contained is accurate at date of publication on 25.02.26. See the main brochure for the full Consumer Protection statement.

The Earl Penthouse

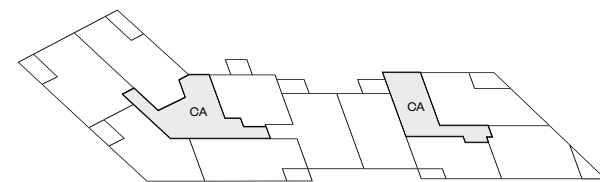
2 bedroom apartment

Plot 52 – as shown

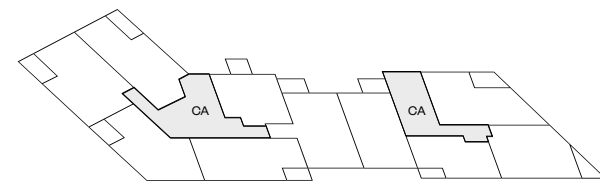
Total sq ft: 884 sq ft



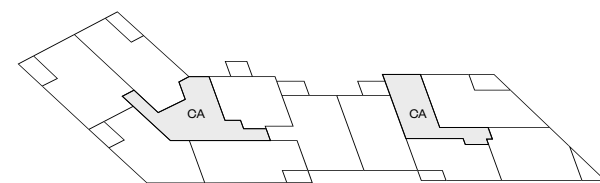
Fifth floor



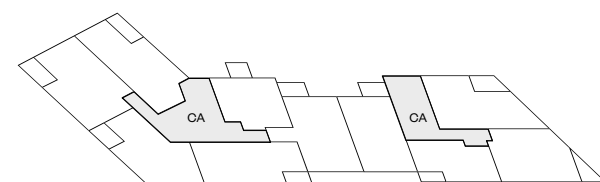
Fourth floor



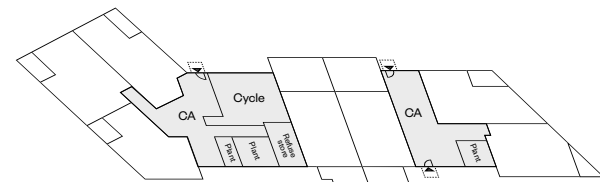
Third floor



Second floor

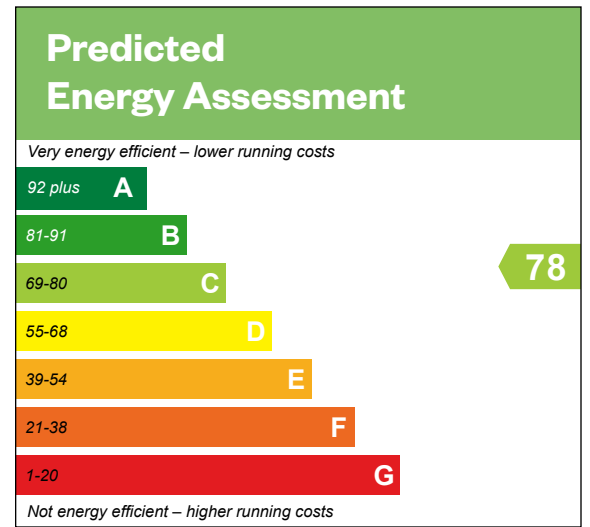
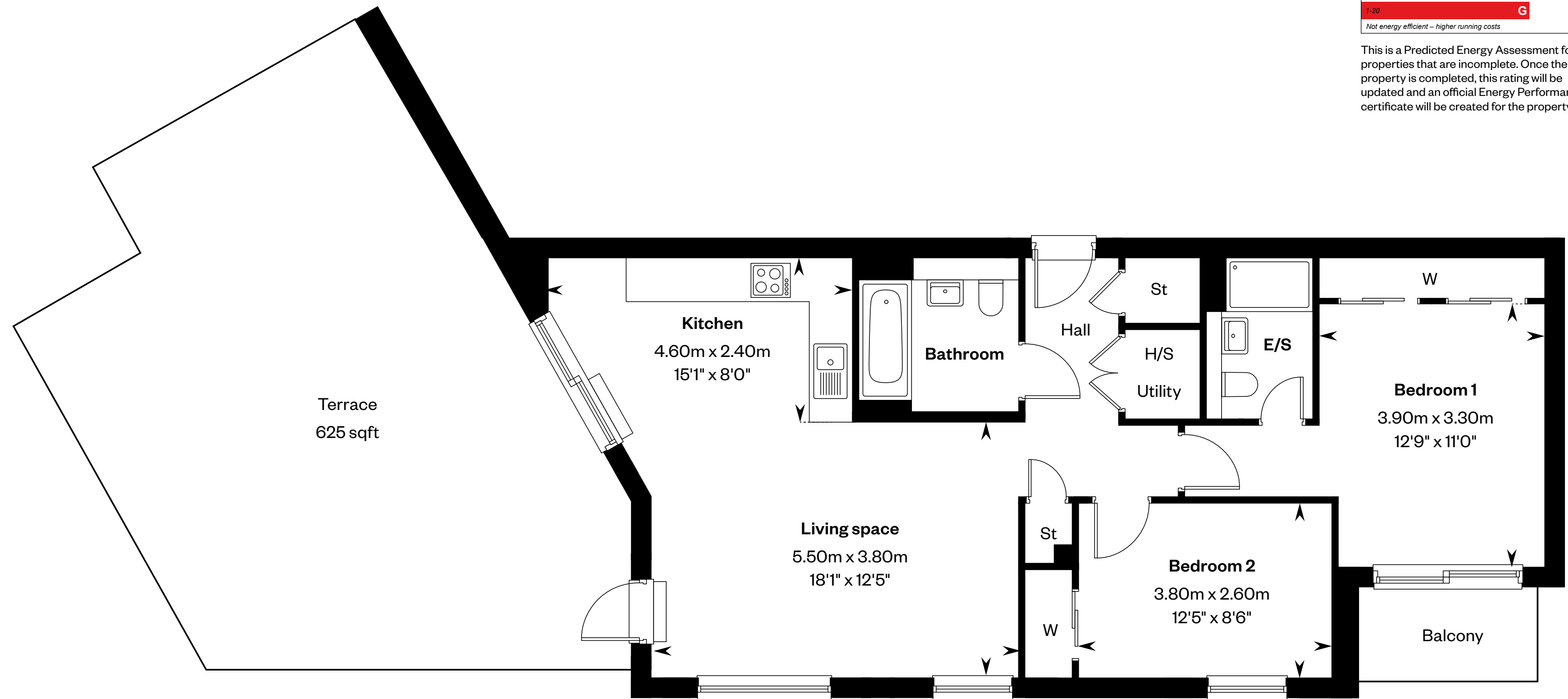


First floor



Ground floor

CA Communal area



This is a Predicted Energy Assessment for properties that are incomplete. Once the property is completed, this rating will be updated and an official Energy Performance certificate will be created for the property.

E/S: En-Suite. H/S: Heating source cupboard. St: Store cupboard. W: Wardrobe.

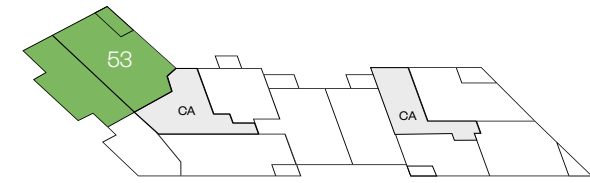
IMPORTANT NOTICE TO CUSTOMERS: The Consumer Protection from Unfair Trading Regulations 2008. Cala Homes (West) Limited operates a policy of continual product development and the specifications outlined in this brochure are indicative only. The computer generated images and photographs do not necessarily represent the actual finishings/elevation or treatments, landscaping, furnishings and fittings at this development. Information contained is accurate at date of publication on 25.02.26. See the main brochure for the full Consumer Protection statement.

The Newland Penthouse

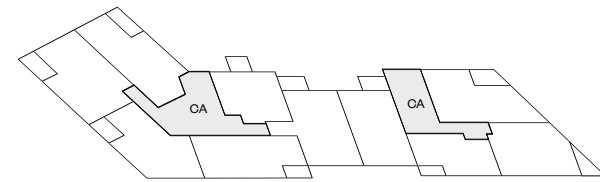
3 bedroom apartment

Plot 53 – as shown

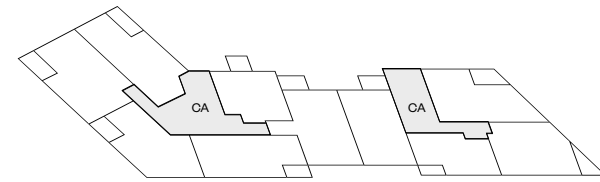
Total sq ft: 1160 sq ft



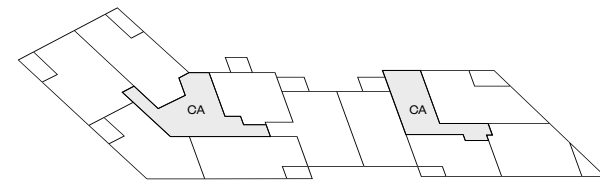
Fifth floor



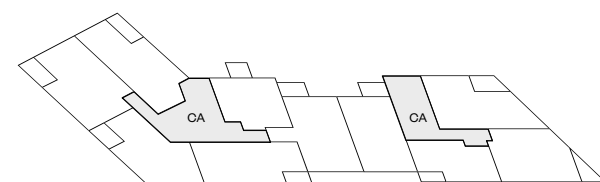
Fourth floor



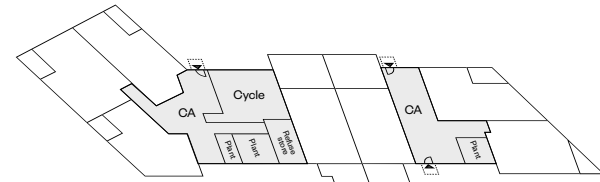
Third floor



Second floor

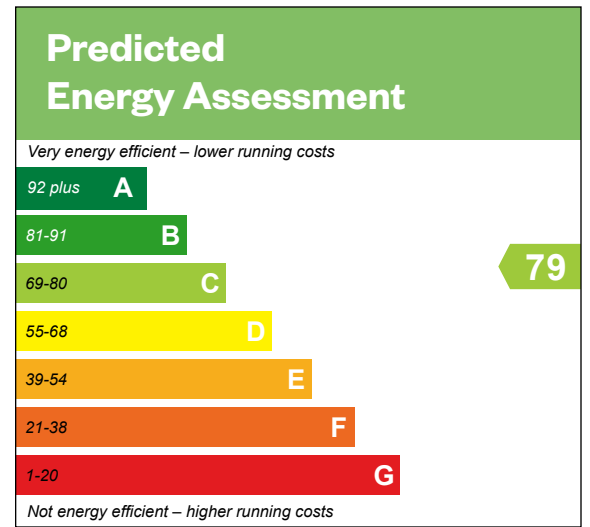
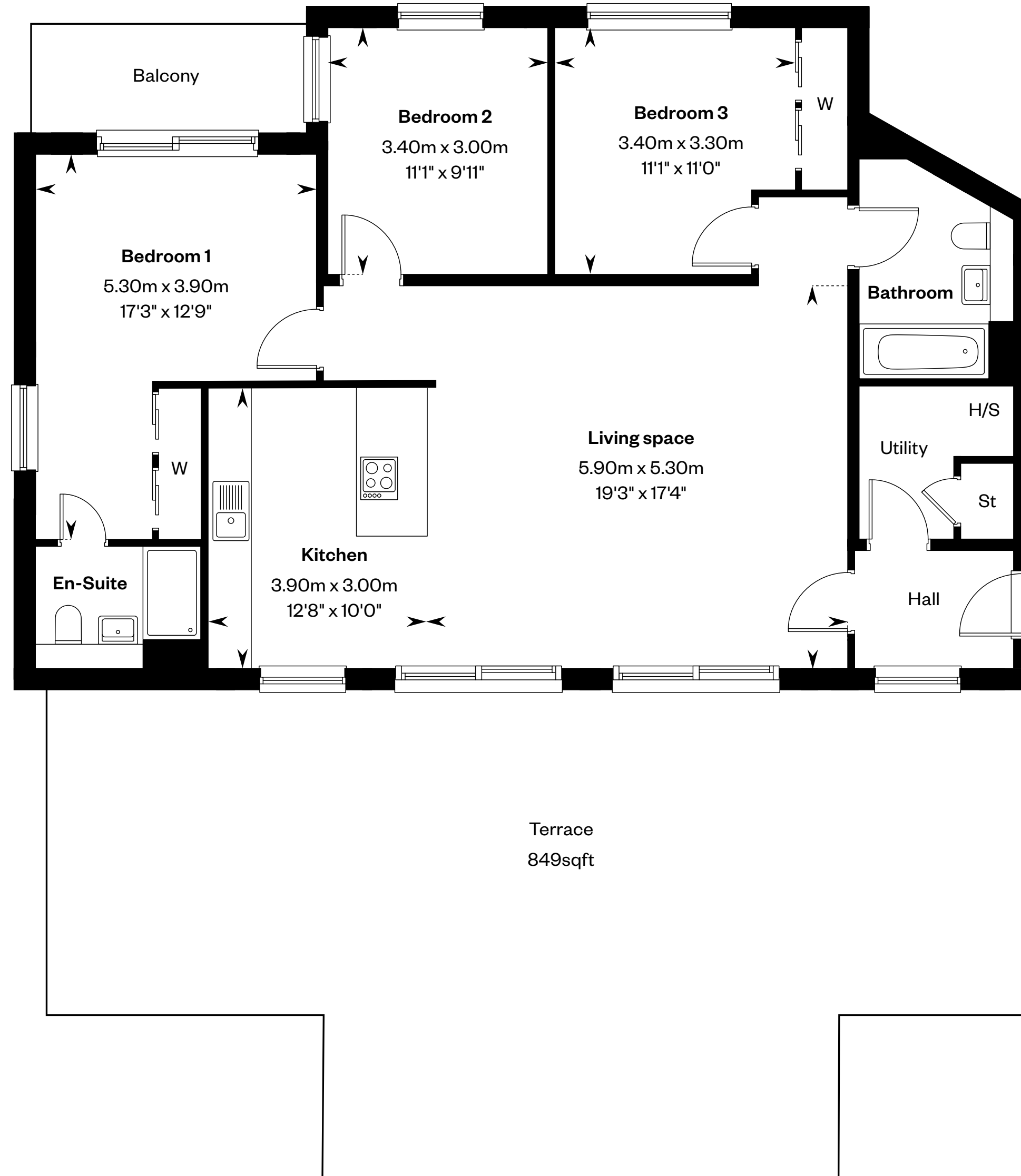


First floor



Ground floor

CA Communal area



This is a Predicted Energy Assessment for properties that are incomplete. Once the property is completed, this rating will be updated and an official Energy Performance certificate will be created for the property.

H/S: Heating source cupboard. St: Store cupboard. W: Wardrobe.

IMPORTANT NOTICE TO CUSTOMERS: The Consumer Protection from Unfair Trading Regulations 2008. Cala Homes (West) Limited operates a policy of continual product development and the specifications outlined in this brochure are indicative only. The computer generated images and photographs do not necessarily represent the actual finishings/elevation or treatments, landscaping, furnishings and fittings at this development. Information contained is accurate at date of publication on 25.02.26. See the main brochure for the full Consumer Protection statement.