

# 3 Bed House - Mid Terrace

Offers around £165,000

Washington Avenue, Chaddesden, Derby, DE21 6JS



[www.phillipsandco.co.uk](http://www.phillipsandco.co.uk) | 01332 40 25 25

**Phillips  
& Co**  
EST. 2012  
MY PAD GROUP

# 3 Bed House - Mid Terrace

# £165,000

📍 Washington Avenue, Chaddesden, Derby, DE21 6JS

Offered for sale with immediate vacant possession and no upward chain is this light and spacious mid town house of some 90 square metres, situated in this highly popular locality. The property benefits from gas central heating together with UPVC double glazing and offers immense potential to improve or extend further (Subject to planning consents). In brief; entrance porch, reception hall, sitting room, dining room, fitted kitchen with integrated appliances. On the first floor a landing leads to three bedrooms and bathroom with four piece suite. Outside are mature gardens to front and rear. The property is sold freehold. Council tax band A. Energy rating C.

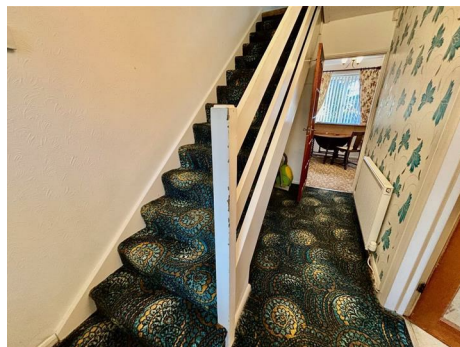
## Entrance Porch

Having UPVC double glazed entrance door, UPVC opaque double glazed window and ceramic tiled floor.

## Reception Hall



Having UPVC opaque double glazed entrance door, radiator and staircase to first floor.



## Sitting Room 15'0" x 12'4" (4.58 x 3.78)



Having random dressed grit stone fire surround with coal effect living flame fire, television connection point, radiator and UPVC double glazed window to front aspect.



## Dining Room 10'4" x 8'6" (3.17 x 2.60)



Having radiator and UPVC double glazed window to rear aspect.

## Fitted Kitchen 10'4" x 8'5" (3.16 x 2.57)



Having a range of shaker style fitted wall, base and drawer units with laminated working surfaces, inset stainless steel four burner gas hob with matching gas double oven and grill, space and plumbing for automatic washing machine, Worcester wall mounted combination gas boiler, inset stainless steel sink top with side drainer, hot and cold mixer tap, UPVC double glazed

[www.phillipsandco.co.uk](http://www.phillipsandco.co.uk) | 01332 40 25 25

**Phillips  
& Co**  
EST. 2012  
MY PAD GROUP

# 3 Bed House - Mid Terrace

# £165,000

📍 Washington Avenue, Chaddesden, Derby, DE21 6JS

window with opaque double glazed door to rear garden.



**Bedroom Two 15'5" x 9'2" (4.72 x 2.81)**



shower cubicle with Triton electric shower, radiator and UPVC opaque double glazed window to rear aspect.



## First Floor Landing

With access to roof space (having pull down loft ladder).

**Principal Bedroom 13'6" x 11'11" (4.12 x 3.65)**



Having a built in wardrobe, radiator and two UPVC double glazed windows to rear aspect.



## Outside



Having a range of built in wardrobes, radiator and two UPVC double glazed windows to front aspect.

**Bedroom Three 9'4" x 8'11" maximum (2.86 x 2.73 maximum)**

Having a bulk head storage cupboard, radiator and UPVC double glazed window.

## Bathroom



The property occupies a well tended mature plot, at this ever popular residential address. To the front is a privet hedged boundary with lawned and shrubbed fore garden. Gated entry to the side leads to the rear garden, enclosed by close panelled fencing, laid to a shaped lawn with patio area, mature shrubs and trees, three brick out buildings and having a cold water tap.

Having a four piece suite with walk in tiled

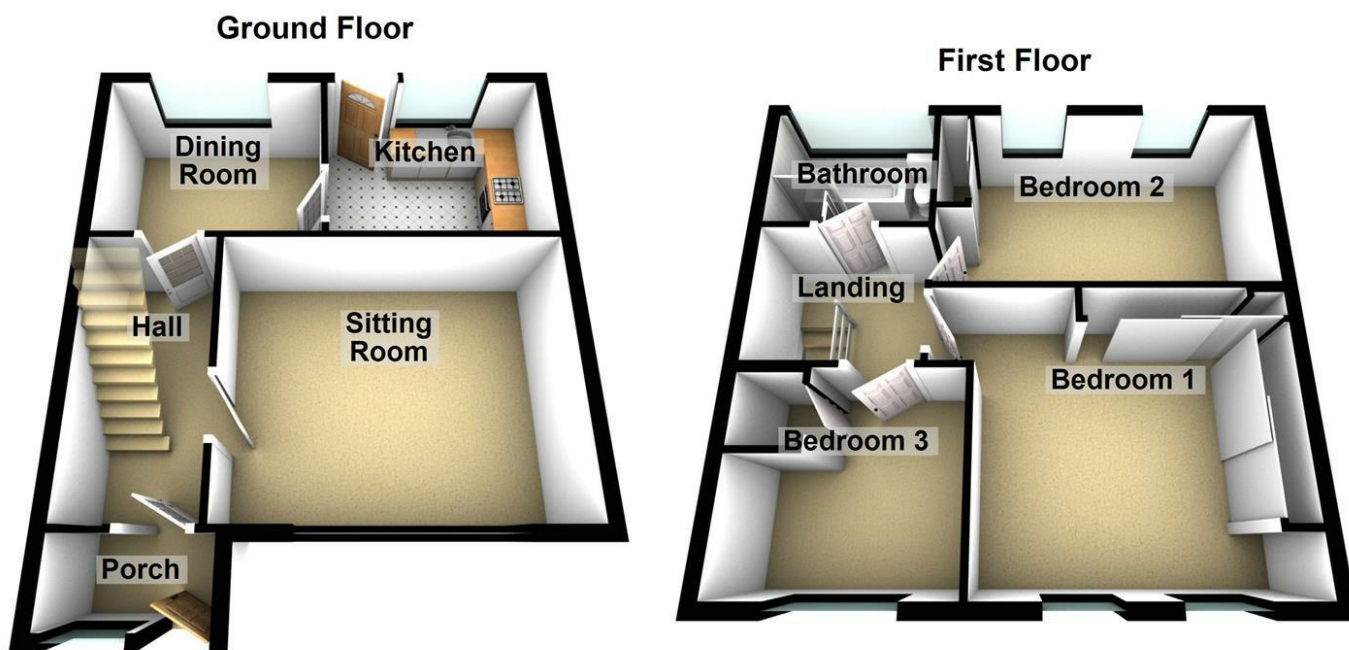
[www.phillipsandco.co.uk](http://www.phillipsandco.co.uk) | 01332 40 25 25

**Phillips & Co**  
EST. 2012  
MY PAD GROUP

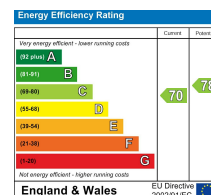
# 3 Bed House - Mid Terrace

# £165,000

Washington Avenue, Chaddesden, Derby, DE21 6JS



You may download, store and use the material for your own personal use and research. You may not republish, retransmit, redistribute or otherwise make the material available to any party or make the same available on any website, online service or bulletin board of your own or of any other party or make the same available in hard copy or in any other media without the website owner's express prior written consent. The website owner's copyright must remain on all reproductions of material taken from this website.



[www.phillipsandco.co.uk](http://www.phillipsandco.co.uk) | 01332 40 25 25

