



BALLATER ROAD, SW2

£400,000

- Victorian
- Split level
- Double bedroom
- Share of freehold
- Chain free
- Energy rating: C





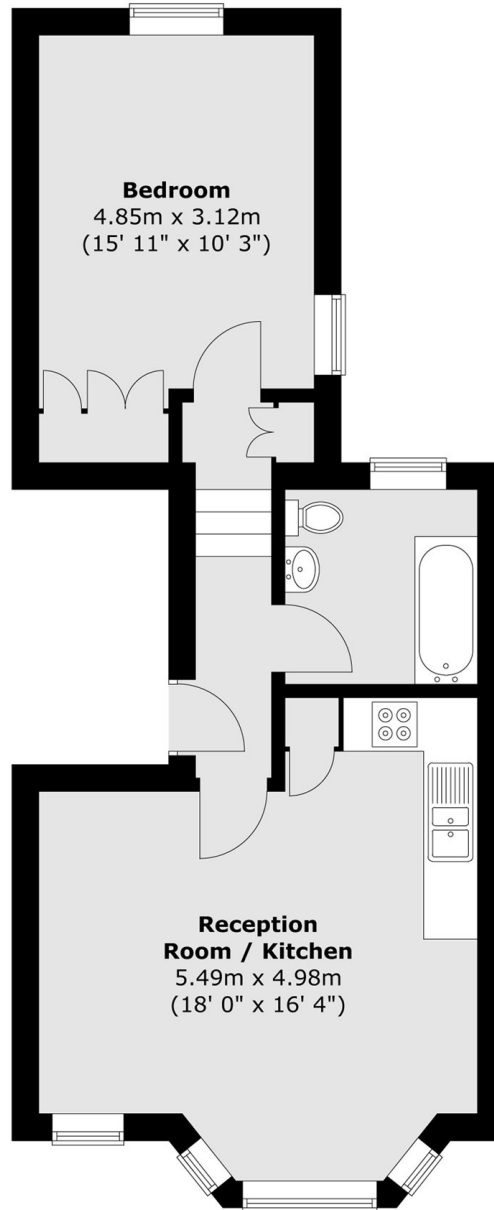
## ABOUT THE HOME

A bright and immaculately presented one bedroom share of freehold flat, finished to a high standard throughout. Offered chain-free, the property comprises a spacious open-plan living area, generous double bedroom and a stylish modern bathroom

Ballater Road is located between Clapham and Brixton offering access to a wealth of amenities including the shops, bars and restaurants of Abbeville Village, Clapham Old Town and Brixton Market. Commuters have a choice of Clapham North (Northern line), Brixton (Victoria line), Clapham High Street (Windrush line) and a number of bus routes into the City.





**First Floor**

Total area (approx.) : 46.6 sq. m (502 sq. ft)

**JACKSONS CLAPHAM**

73 Abbeville Road, London,  
SW4 9JN

Sales: 020 8487 3177

Lettings: 020 8487 3178

Energy Rating: C We aim to make our particulars both accurate and reliable. However they are not guaranteed; nor do they form part of an offer or contract. If you require clarification on any points then please contact us, especially if you're traveling some distance to view. Please note that appliances and heating systems have not been tested and therefore no warranties can be given as to their good working order.