



St. Margarets Road, TW1

£1,850 Per calendar month

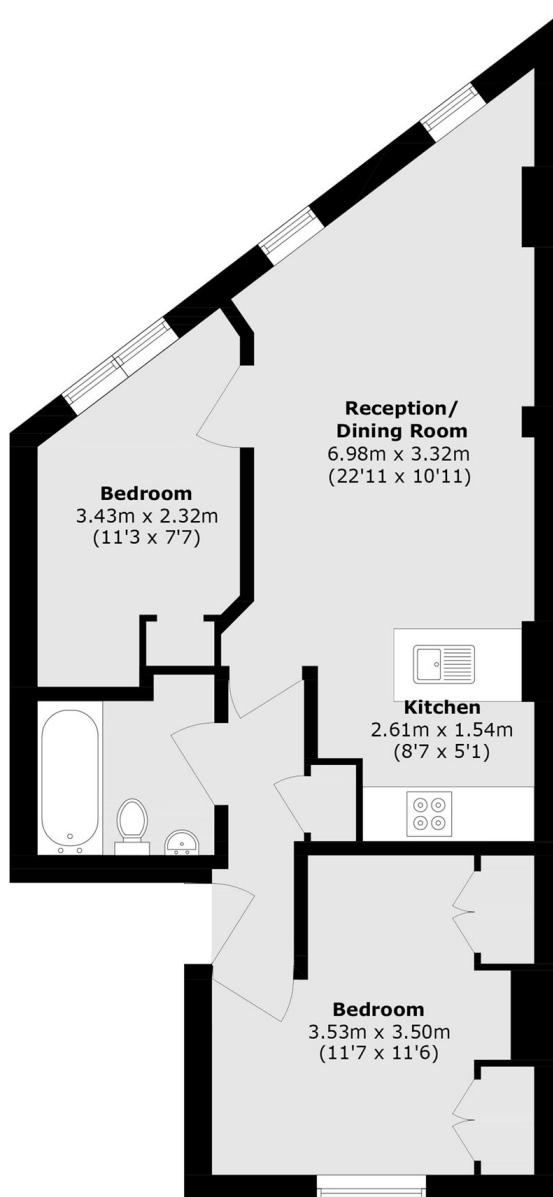
A bright and spacious first-floor conversion flat offering two double bedrooms in the heart of St Margarets. The property features a generous open-plan kitchen/living area, a large separate living room and excellent built-in storage throughout. Offered unfurnished and positioned just 0.1 miles from St Margarets Station, it provides the perfect blend of comfort and convenience, with easy access to local shops, cafés and transport links.

St Margarets Road is ideally located just 0.1 miles from a selection of boutique shops, cafés and independent amenities, as well as St Margarets Station, which offers direct links to London Waterloo. Marble Hill Park and Moor Mead Park are also close by.

Features

- Village Location
- Large Living Room
- Open-Plan Layout
- Two Double Bedrooms
- Forst Floor
- Built-In Storage

St. Margarets Road, St Margarets, TW1



Total area (approx.): 48.6 sq. m (523.1 sq. ft)