



NEWTOWN LODGE

Ramsbury, Wiltshire



A WELL-BALANCED FAMILY HOME ON THE EDGE OF RAMSBURY.

Newtown Lodge combines period charm, generous living space and approximately 5.65 acres of idyllic grounds. With a separate annexe and barn, it offers flexible accommodation in one of Wiltshire's most sought after villages.

Summary of accommodation

Five bedrooms | Three bathrooms | Three/four receptions

Annexe with shower room | Double garage | Barn | Greenhouse | Shed | Garden

EPC band: D

Local Authority: Wiltshire Council

Council Tax band G

Services: Mains water and drainage. Mains electricity. Oil heating. Photo-voltaic panels providing electricity together with storage battery.

Postcode: SN8 2QD

What3words: ///spires.gathering.youthful

Tenure: Freehold

Distances: XHungerford 4 miles (London Paddington from 45 minutes), Marlborough 7 miles,
Swindon 12 miles (London Paddington from 49 minutes), M4 J14 6.5 miles
(All distances and times are approximate)

LOCATION

Newtown Lodge is located on the outskirts of the sought-after village of Ramsbury, situated in the picturesque Kennet valley. The surrounding countryside is designated as an Area of Outstanding Natural Beauty.

The village has a thriving community supported by two shops and a post office, a public house/hotel, primary school, pre-school, doctors' surgery, tennis and football clubs and a superbly equipped recreation centre. Nearby Marlborough and Hungerford, with their weekly markets, vibrant café culture and a variety of popular boutiques, provide a broader range of shopping and recreational facilities. In addition to the well-regarded primary school, other popular schools include Pinewood, Dauntseys, St John's Marlborough and Marlborough College.

Communications are excellent with the M4 (J14) providing access to London and the West Country. Trains from Hungerford to London Paddington take as little as 45 minutes and from Swindon into Paddington about 50 minutes.



THE PROPERTY

Newtown Lodge is a well-presented family home combining period character with modern comfort. With origins dating back to 1825 and sympathetic later additions from the 1990s, the property offers generous and flexible accommodation extending to approximately 4,388 sq ft, including a separate annexe and barn.

The principal house provides light and well-arranged living space. The accommodation flows naturally, with the conservatory taking full advantage of the wonderful outlook across the gardens. Upstairs, the principal bedroom is a particular highlight, featuring a vaulted ceiling that enhances both volume and character. There are five bedrooms and three bathrooms in total, offering excellent space for family, guests or visiting friends.



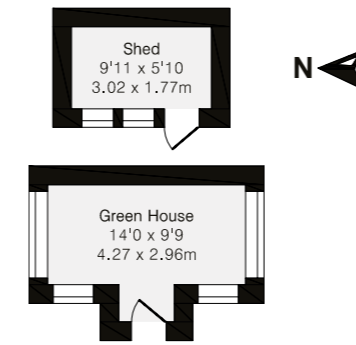
A notable feature of Newtown Lodge is the valuable range of ancillary accommodation. The separate annexe provides ideal space for multi generational living, guest accommodation or a home office, while the barn offers excellent storage or further potential, subject to any necessary consents.

The house is approached via a driveway with plentiful parking and is set within approximately 5.65 acres of gardens and grassland. The outdoor space is predominantly laid to lawn with wide, open areas. A charming tributary of the River Kennet runs along the far boundary—an idyllic backdrop.

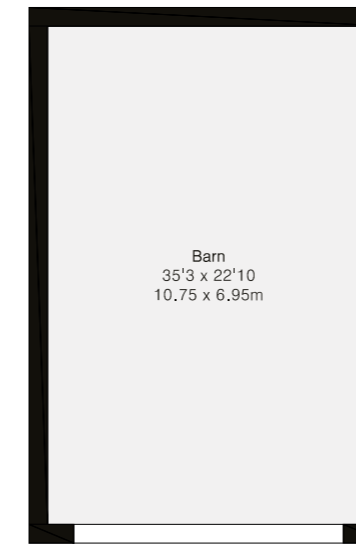
Newtown Lodge is a well located family home that combines village living with a real sense of space. It is perfectly suited to those seeking a comfortable and connected lifestyle in a highly regarded Wiltshire setting.

VIEWING

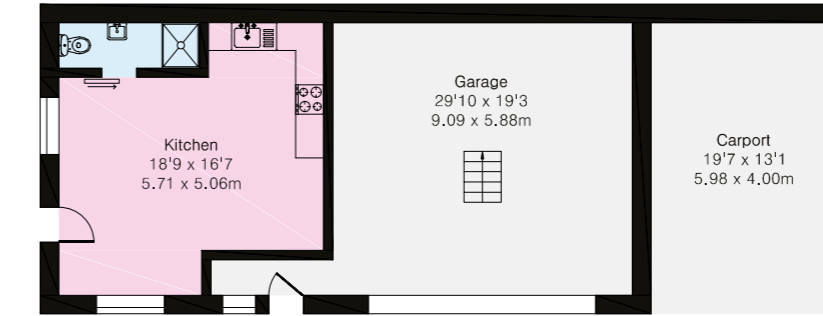
Viewing by prior appointment only with the Agents.



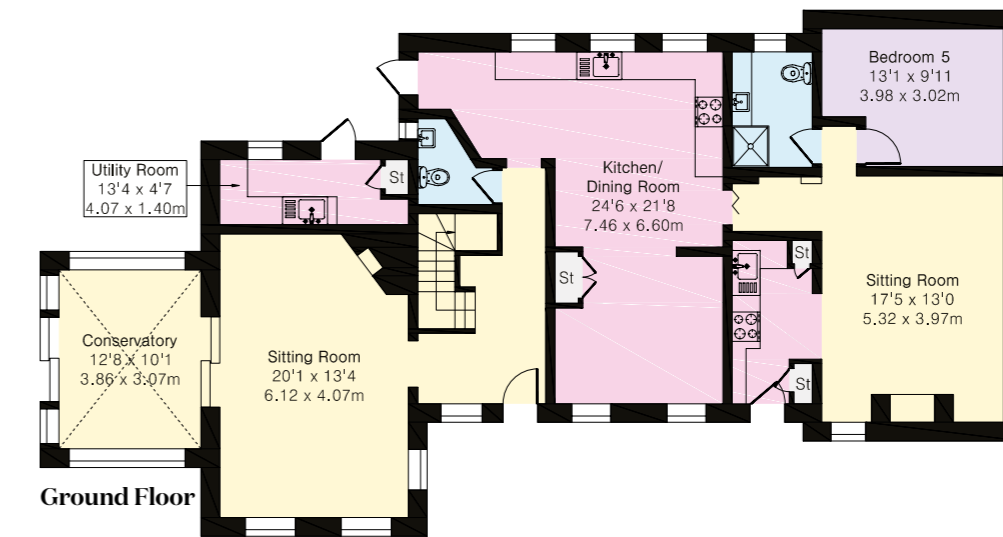
Outbuilding



Barn



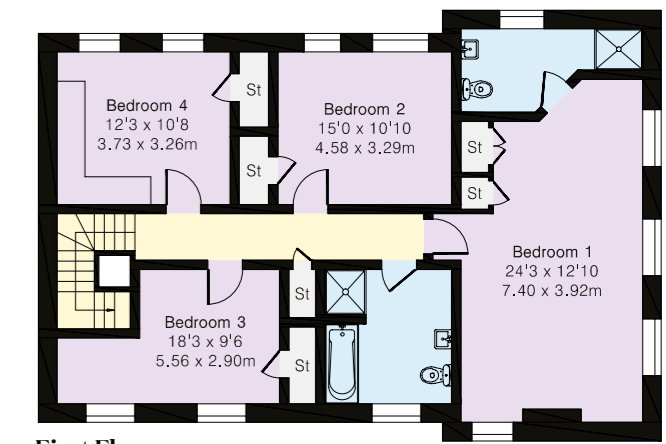
Annexe Ground Floor



Ground Floor



Loft



First Floor

- Reception
- Bedroom
- Bathroom
- Kitchen/Utility
- Storage
- Outside

Approximate Gross Internal Area = 2634 sq ft - 244 sq m
 (Excluding Annexe, Loft, Barn & Outbuilding)
 Annexe Ground Floor Area 783 sq ft - 73 sq m
 Loft Area 487 sq ft - 45 sq m
 Barn Area 804 sq ft - 75 sq m
 Outbuilding Area 167 sq ft - 16 sq m

This plan is for layout guidance only. Not drawn to scale unless stated. Windows and door openings are approximate. Whilst every care is taken in the preparation of this plan, please check all dimensions, shapes and compass bearings before making any decisions reliant upon them.

I would be delighted
to tell you more.

Mark Potter
01488 682726
mark.potter@knightfrank.com

Knight Frank Hungerford
Ramsbury House, 22 High Street
Hungerford, RG17 0NF

[knightfrank.co.uk](https://www.knightfrank.co.uk)

Your partners in property

1. Particulars: These particulars are not an offer or contract, nor part of one. You should not rely on statements given by Knight Frank in the particulars, by word of mouth or in writing ("information") as being factually accurate about the property, its condition or its value. Neither Knight Frank nor any joint agent has any authority to make any representations about the property, and accordingly any information given is entirely without responsibility on the part of Knight Frank. 2. Material Information: Please note that the material information is provided to Knight Frank by third parties and is provided here as a guide only. While Knight Frank has taken steps to verify this information, we advise you to confirm the details of any such material information prior to any offer being submitted. If we are informed of changes to this information by the seller or another third party, we will use reasonable endeavours to update this as soon as practical. 3. Photos, Videos etc: The photographs, property videos and virtual viewings etc. show only certain parts of the property as they appeared at the time they were taken. Areas, measurements and distances given are approximate only. 4. Regulations etc: Any reference to alterations to, or use of, any part of the property does not mean that any necessary planning, building regulations or other consent has been obtained. A buyer must find out by inspection or in other ways that these matters have been properly dealt with and that all information is correct. 5. Fixtures and fittings: A list of the fitted carpets, curtains, light fittings and other items fixed to the property which are included in the sale (or may be available by separate negotiation) will be provided by the Seller's Solicitors. 6. VAT: The VAT position relating to the property may change without notice. 7. To find out how we process Personal Data, please refer to our Group Privacy Statement and other notices at <https://www.knightfrank.com/legals/privacy-statement>.

Particulars dated May 2026. Photographs and videos dated January and May 2026. Reference: MRP/HNGO12563929. All information is correct at the time of going to print. Knight Frank is the trading name of Knight Frank LLP. Knight Frank LLP is a limited liability partnership registered in England and Wales with registered number OC305934. Our registered office is at 55 Baker Street, London W1U 8AN. We use the term 'partner' to refer to a member of Knight Frank LLP, or an employee or consultant. A list of members names of Knight Frank LLP may be inspected at our registered office. If you do not want us to contact you further about our services then please contact us by either calling 020 3544 0692, email to marketing.help@knightfrank.com or post to our UK Residential Marketing Manager at our registered office (above) providing your name and address. Brochure by wordperfectprint.com