



Birmingham Road, Stratford-Upon-Avon, CV37 0AQ

**SHELDON  
BOSLEY  
KNIGHT**

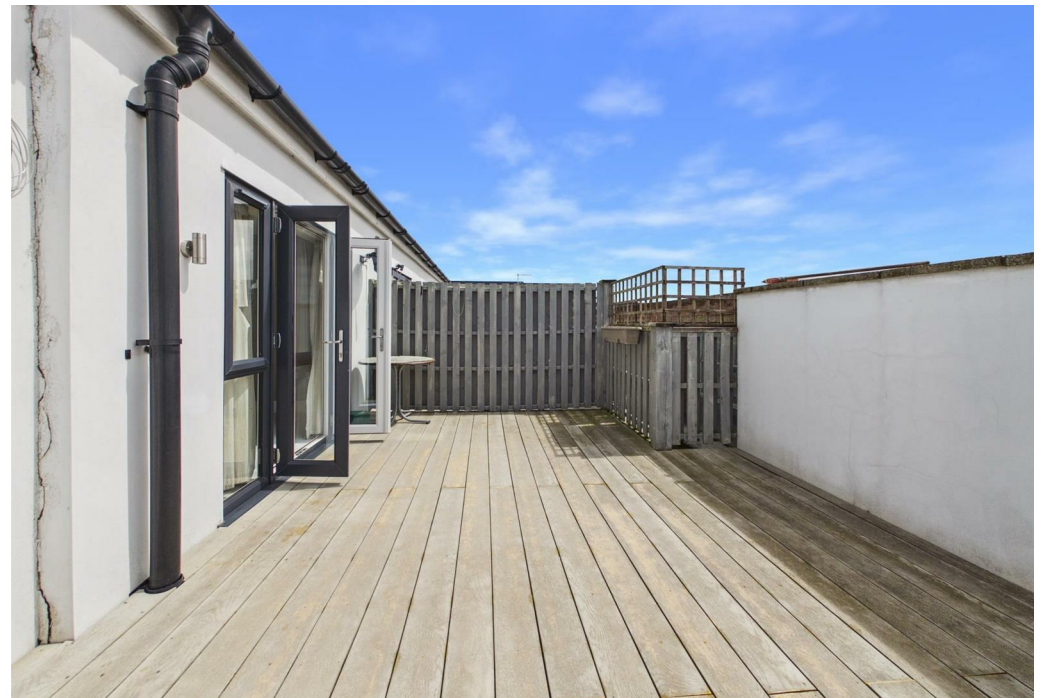
LAND AND  
PROPERTY  
PROFESSIONALS

# Property Description

\*\*\* DEPOSIT ALTERNATIVE AVAILABLE

\*\*\* A well presented, two bedroom Apartment situated within walking distance to the Town Centre. Briefly comprising; Entrance Hallway, open plan Living room/Kitchen with patio doors leading out to a patio terrace. The kitchen is fitted with modern wall & base units and integrated appliances including a fridge/freezer, dishwasher, cooker & hob. The washer/dryer is housed in a separate cupboard in the second bedroom. There are two double bedrooms, the main bedroom benefits from having an En-Suite shower room. The property has off road parking for one car and is offered Unfurnished. Council Tax Band B, Energy Rating E.





# Key Features

- \*\*\* DEPOSIT ALTERNATIVE AVAILABLE \*\*\*
- Stratford upon Avon
- Two Double Bedrooms
- First Floor Apartment
- Unfurnished
- Off Road Parking
- Patio Terrace
- Council Tax Band B
- Energy Rating E
- Available from 30.06.26



Approximate total area<sup>(1)</sup>  
715 ft<sup>2</sup>  
66.4 m<sup>2</sup>

(1) Excluding balconies and terraces

Calculations reference the RICS IPMS 3C standard. Measurements are approximate and not to scale. This floor plan is intended for illustration only.

GIRAFFE360

**£1,200 PCM**