







27 Norwich

South Street • Park Hill • S2 5AY

Guide Price £190,000

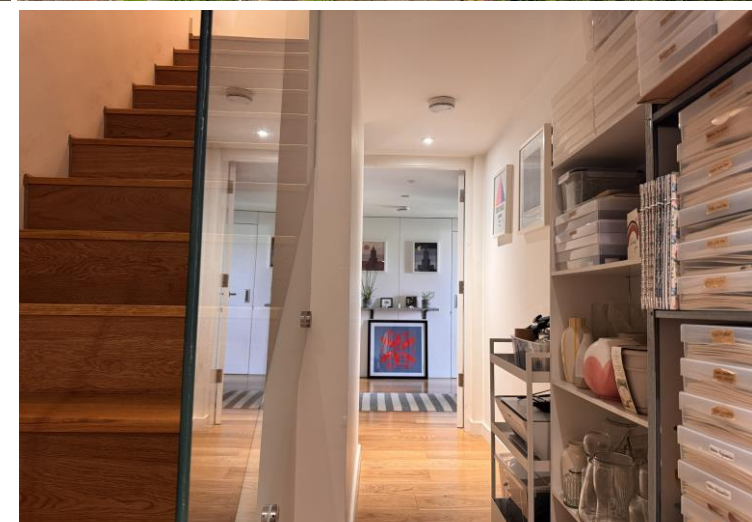
An outstanding one-bedroom apartment forming part of the iconic Park Hill development, renowned for its celebrated “streets in the sky” design and Grade II* listed status. Norwich occupies a top-floor position, and this larger-style apartment extends to an impressive 835 sq ft and enjoys spectacular panoramic views across the city skyline. No 27 also featured in an episode of Doctor Who! Beautifully combining contemporary living with the character of the original architecture, the property features exposed concrete finishes, generous glazing and an abundance of natural light throughout. An entrance lobby with stairs descending to the inner hallway provides a versatile additional storage area. The superb open-plan living space offers a bright and airy atmosphere, enhanced by expansive windows overlooking the landscaped communal gardens. The modern kitchen is fitted with stylish ply and white-faced units, complemented by matching work surfaces and a range of integrated appliances including oven, hob, extractor, washer/dryer and full-height storage. The spacious double bedroom benefits from a recessed wardrobe area together with stunning elevated views across the city centre and surrounding greenery. A contemporary bathroom is fitted with a Vitra white suite comprising bath with overhead shower, wash hand basin and WC. Further benefits include an integrated mechanical ventilation and air filtration system, while heating and hot water are supplied via the Sheffield District Energy Network, providing an efficient and sustainable energy source. Residents of Park Hill enjoy access to beautifully landscaped communal gardens designed by Grant Associates, featuring sweeping lawns and silver birch planting. Parking spaces are available to rent separately. Perfectly positioned on the edge of Sheffield city centre, the development offers excellent access to local amenities, the Supertram network and the mainline railway station, while nearby green spaces and cycle routes including Sheaf Valley Park provide an attractive balance of urban living and outdoor space.





- 1 Bedroom Architect Designed Iconic Apartment
- Measuring an Impressive 835 sq ft
- Open Plan Dining, Kitchen & Living Space
- Integrated Kitchen Appliances
- Air Filtration & District Heating System

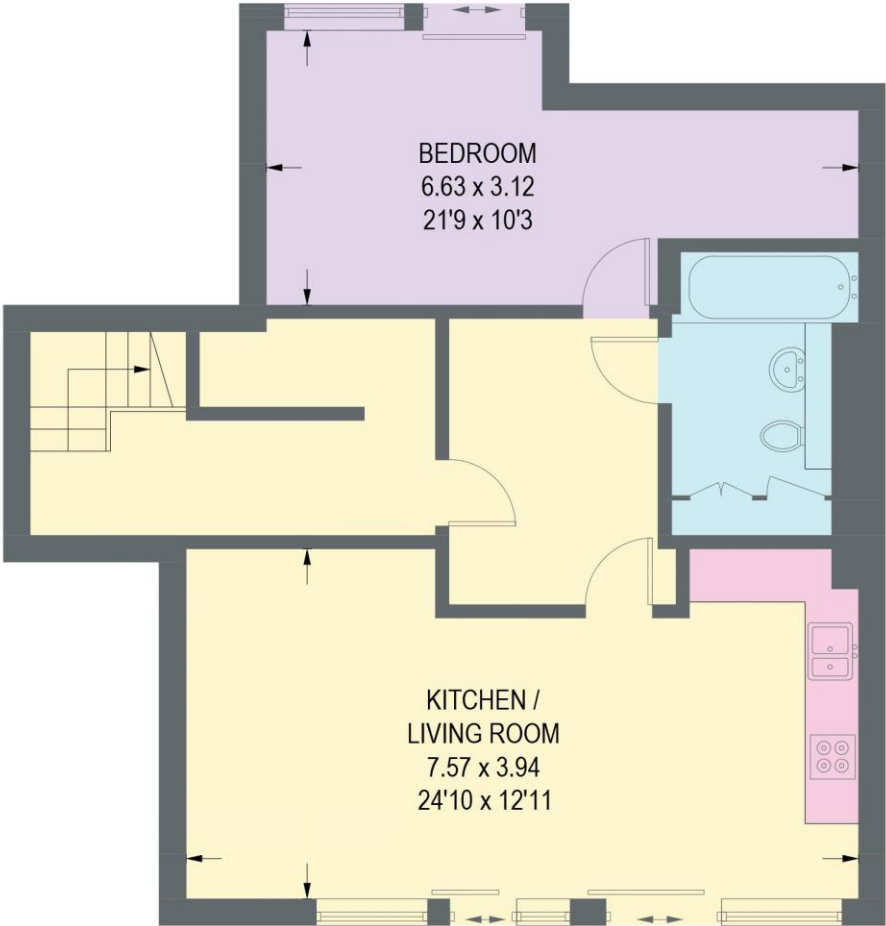
- Landscaped Gardens by Grant Associates
- Spectacular Panoramic Views Across The City
- Excellent Amenities & Transport Links
- Car Parking Available to Rent
- Council Tax Band B & EPC Rating TBC



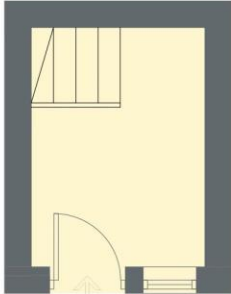


27 NORWICH, PARK HILL

APPROXIMATE GROSS INTERNAL AREA = 77.6 SQ M / 835 SQ FT



ELEVENTH FLOOR
72.2 SQ M / 777 SQ FT



IN
TWELFTH FLOOR
5.4 SQ M / 58 SQ FT

Illustration for identification purposes only,
measurements are approximate, not to scale.

IMPORTANT: we would like to inform prospective purchasers that these sales particulars have been prepared as a general guide only. A detailed survey has not been carried out, nor the services, appliances and fittings tested. Room sizes should not be relied upon for furnishing purposes and are approximate. If floor plans are included, they are for guidance only and illustration purposes only and may not be to scale. If there are any important matters likely to affect your decision to buy, please contact us before viewing the property.



haus

West Bar House, 137 West Bar, Sheffield, S3 8PU
hello@haushomes.co.uk [haushomes.co.uk](https://www.haushomes.co.uk)

0114 276 8868