



MARSHAM STREET, SW1P

£2,850,000

Three bedrooms
Bright open-plan living
Modern kitchen
Secure building
Lift access
Energy rating: b

@marshandparsons
marshandparsons.co.uk

MARSH &
PARSONS

ABOUT THE PROPERTY

An exceptional three bedroom apartment set within the prestigious Drake House, SW1P, offering refined living in the heart of Westminster.

This elegant residence boasts a beautifully proportioned open-plan reception and dining area, bathed in natural light from expansive windows, creating a sophisticated yet inviting atmosphere. The bespoke contemporary kitchen is impeccably designed, featuring premium integrated appliances, sleek cabinetry, and high-spec finishes-perfectly suited for both entertaining and everyday indulgence.

The apartment offers three generously sized bedrooms, including a luxurious principal suite.

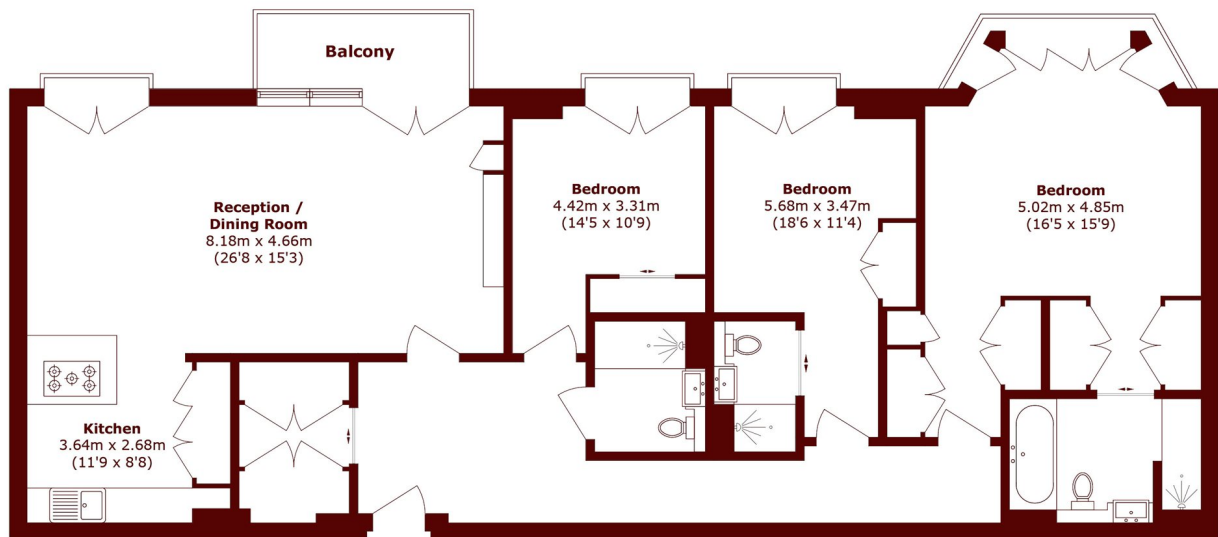








STEP INSIDE MARSHAM STREET



Total area (approx.): 143.8 sq. m (1547.9 sq. ft)

Balcony area (approx.): 4.7 sq. m (50.6 sq. ft)

Pimlico & Westminster
020 7590 0800

Energy Rating: B We aim to make our particulars both accurate and reliable. However, they are not guaranteed; nor do they form part of an offer or contract. If you require clarification on any points then please contact us, especially if you're traveling some distance to view. Please note that appliances and heating systems have not been tested and therefore no warranties can be given as to their good working order

**MARSH &
PARSONS**