

A photograph of a two-story brick house with a tiled roof. The house features a blue front door, a blue garage door, and large white-framed bay windows on both floors. A silver car is parked in the garage. The house is surrounded by a brick-paved driveway and a small lawn. The sky is clear and blue.

Old Birmingham Road, Lickey End, Bromsgrove, B60 1DF | £259,950

# Old Birmingham Road

REF: 11599

## Three Bedroom Semi-Detached House

A much improved and well presented three double bedroom semi-detached house, offering lovely views to the rear of the property & NO CHAIN, situated in Lickey End, Bromsgrove.

The accommodation briefly features:- Driveway & Garage, Hallway, Lounge with Patio Door to Rear Garden, Dining Room with Bay Window, Kitchen with Integrated Oven, Hob & Extractor, Utility Room, Downstairs WC, Stairs to First Floor Landing, Master Bedroom with Bay Window, Double Bedroom Two with Bay Windows, Double Bedroom Three and Re-Fitted Bathroom with both Bath & Separate Shower.

Outside, the property enjoys a rear garden with a paved patio, lawn, mature planted beds and trees with fenced boundaries.

Lickey End is positioned between Barnt Green and Bromsgrove, located at the bottom of the Lickey Hills. The property is conveniently situated near the M5 and M42 motorways with an excellent first school, shops, and local amenities within close proximity.

EPC F / Council Tax Band D

This property is sold on a freehold basis



For more information on Old Birmingham Road or to arrange a viewing, please call the Bromsgrove office on 01527 872 479

ROOM DIMENSIONS:

HALLWAY

LOUNGE: 12' 9" (Max) x 10' 11" (Max) (3.9m x 3.35m)

DINING ROOM: 13' 1" (Into the Bay) x 10' 11" (4m x 3.35m)

KITCHEN: 9' 2" x 7' 6" (2.8m x 2.3m)

UTILITY ROOM:

DOWNSTAIRS WC

GARAGE: 14' 9" x 8' 0" (4.5m x 2.45m)

STAIRS TO FIRST FLOOR LANDING

MASTER BEDROOM: 13' 5" (Max) x 10' 11" (Max) (4.1m x 3.35m)

BEDROOM TWO: 13' 1" (Into the Bay) x 10' 11" (4m x 3.35m)

BEDROOM THREE: 14' 7" (Max) x 7' 10" (Max) (4.45m x 2.4m)

BATHROOM: 9' 2" (Max) x 7' 2" (Max) (2.8m x 2.2m)



*As the sellers agent we are not surveyors or conveyancing experts, as such we cannot and do not comment on the condition of the property or issues relating to title or other legal issues that may affect this property, unless we have been made aware of such matters. Interested parties should employ their own professionals to make such enquiries before making any transactional decisions.*

### Old Birmingham Road, Bromsgrove First Floor



### Ground Floor

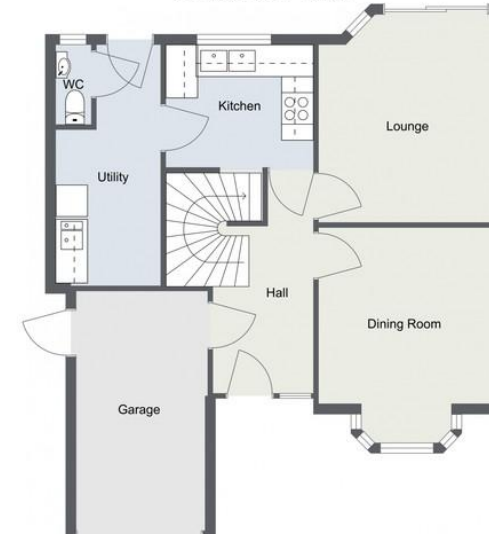


For illustrative purposes only. Decorative finishes, fixtures, fittings and furnishings do not represent the current state of the property. Measurements are approximate. Not to scale.  
Floor Plans made using RoomSketcher.

### Old Birmingham Road, Bromsgrove First Floor



### Ground Floor



For illustrative purposes only. Decorative finishes, fixtures, fittings and furnishings do not represent the current state of the property. Measurements are approximate. Not to scale.  
Floor Plans made using RoomSketcher.

Every care has been taken with the preparation of these particulars, but they are for general guidance only and complete accuracy cannot be guaranteed. If there is any point, which is of particular importance please ask or professional verification should be sought. All dimensions are approximate. The mention of any fixtures, fittings and/or appliances does not imply that they are in full efficient working order. Photographs are provided for general information and it cannot be inferred that any item shown is included in the sale. These particulars do not constitute a contract or part of a contract.