

Frank Harris & Co.



Clare Court, WC1H

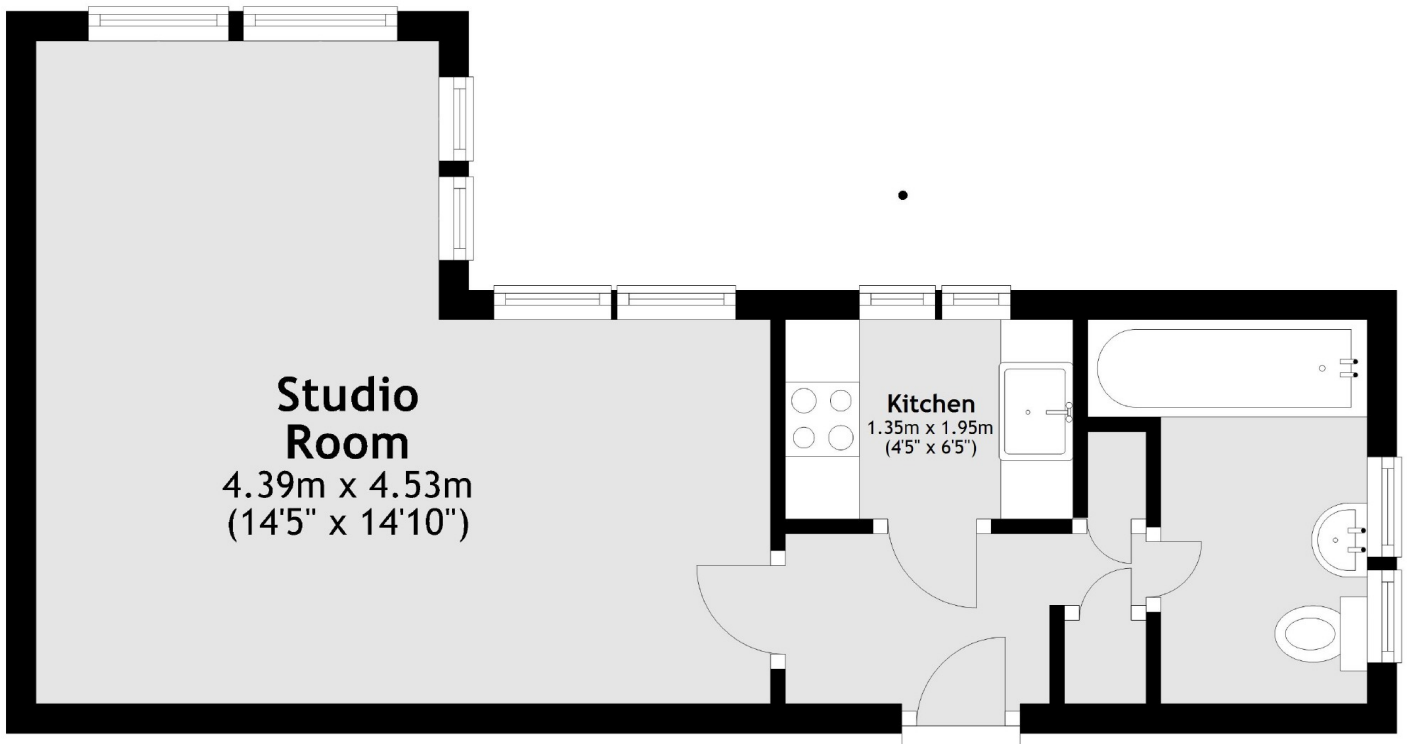
£2,000 pcm

A beautifully presented and bright 5th floor studio apartment set within this period Art Deco block. The property is uniquely laid-out and offers a versatile living setup. Offered furnished.

Clare court is located in the heart of Bloomsbury, Close to both King's Cross and Russell Square stations. The coffee shops and boutiques of Marchmont Street, and the bars and restaurants of the Brunswick Centre are only 0.2 miles away.

- Self-contained studio • Wooden floors • Concierge •
- 5th floor with lift • Central location • Heating and hot water bills included •

Frank Harris & Co.



Total area: approx. 28.5 sq. metres (307.1 sq. feet)

Frank Harris & Co. Bloomsbury and Kings Cross
81 Marchmont Street, London,
WC1N 1AL
020 7387 0077
bloomsburylettings@frankharris.co.uk

Energy Rating: E. We aim to make our particulars both accurate and reliable. However they are not guaranteed; nor do they form part of an offer or contract. If you require clarification on any points then please contact us, especially if you're traveling some distance to view. Please note that appliances and heating systems have not been tested and therefore no warranties can be given as to their good working order.

