



Highbury Crescent, N5

£750,000

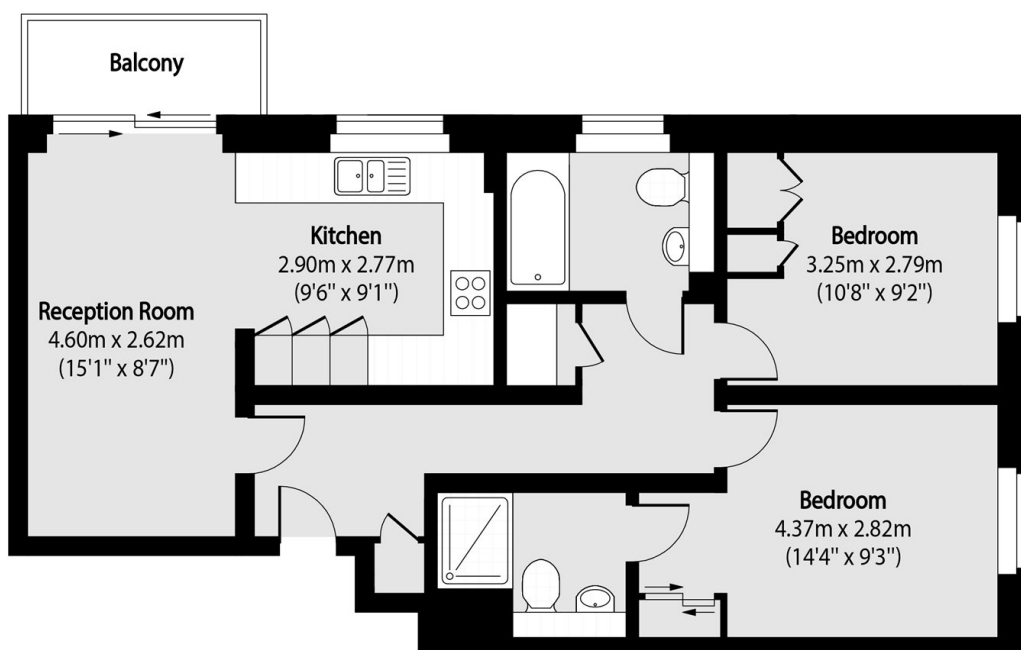
This first floor property features an open-plan kitchen/living area with access to a private west facing balcony, two double bedrooms and two bathrooms. The property also comes with a private parking space.

Highbury & Islington Station (Victoria Line, National Rail and Overground) is just across the park around a quarter mile away. The property is also equidistant between both Upper Street and Highbury Barn, with an array of boutique shops, deli's and eateries.

Features

- Two Bedrooms
- Two Bathrooms
- Private Balcony
- Private Parking Space
- Chain Free
- Communal Garden

Highbury Crescent, London, N5



Total area (approx): 63.26 sq m (681 sq. ft)

Balcony total area (approx): 3.6 sq m (39 sq. ft)