



ANDREW  
**DOWNING**  
**BOOTH**™  
ESTATE AGENTS

# Violet Walk, Fradley, Lichfield - Stunning Three Bedroom Home

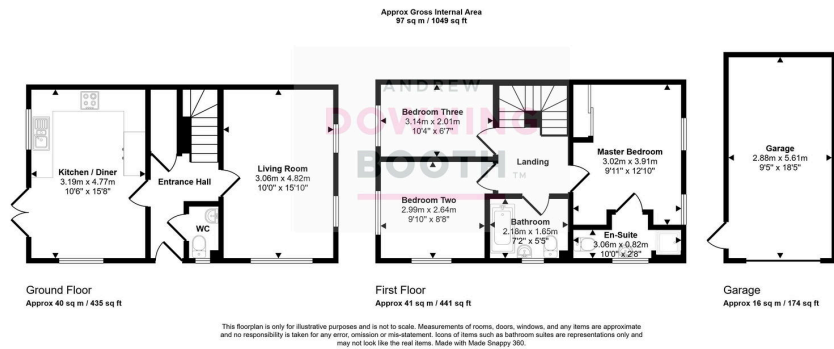
£335,000

🛏️ 3 🚿 2 🛋️ 2



Roses are red, violets are blue, we love this property and we're sure you will too! This three bedroom detached home comes to the market presented to a stunning standard throughout. The accommodation is spacious and comprises an entrance hall, guest WC, large dual aspect living room and superb contemporary kitchen diner. Upstairs are three good sized bedrooms (none of which could be described as a box) along with a wonderful modern en-suite and family bathroom. Outside is a generous plot, with generous tarmac driveway sitting in front of the larger than average single garage and a gate provides access to a landscaped, enclosed garden laid mainly to lawn with a large paved patio. This is a must view home, so don't miss out and book in your viewing today!





- Generous Three Bedroom Detached Home
- Large Living Room & Stunning Kitchen Diner
- Modern Bathroom, En-Suite & Guest WC
- Coming With The Remainder Of Its 10 Year NHBC Warranty
- Ample Parking & Garage
- Good Sized Landscaped Garden
- EPC Rating: B
- Council Tax Band: D

