



Flat 11, Regnum Court, North Walls - PO19 1BZ

Guide Price £175,000 Leasehold

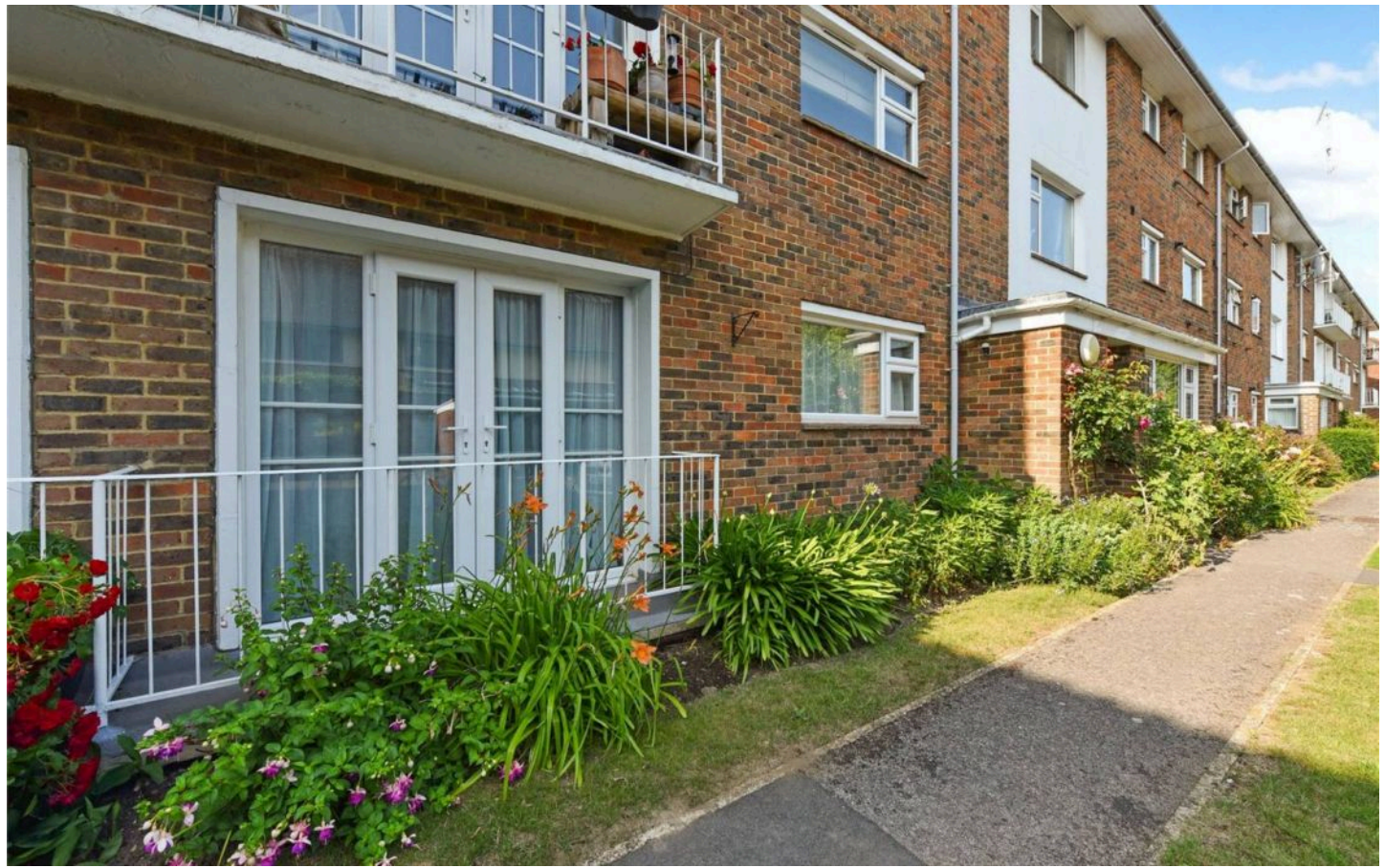


STRIDE & SON

Flat 11

Regnum Court, Chichester

A one bedroom purpose built ground floor apartment, centrally located within the City Walls, with the benefit of an undercover allocated parking space and communal gardens.







Flat 11 Regnum Court

ACCOMMODATION

The property is presented in fair order throughout, with the accommodation comprising entrance hall with entry phone, double aspect sitting/dining room with patio doors onto a small terrace.

Kitchen with a range of wall and base units, worktops, stainless steel sink and drainer, electric hob and oven, space and plumbing for washing machine, space for under counter fridge and freezer, cupboard housing electric consumer unit, serving hatch to dining area.

There is a double bedroom with built in wardrobe and bathroom with low level WC, pedestal hand wash basin, panel bath with shower over, half height wall tiling, heated towel rail and airing cupboard housing hot water tank.

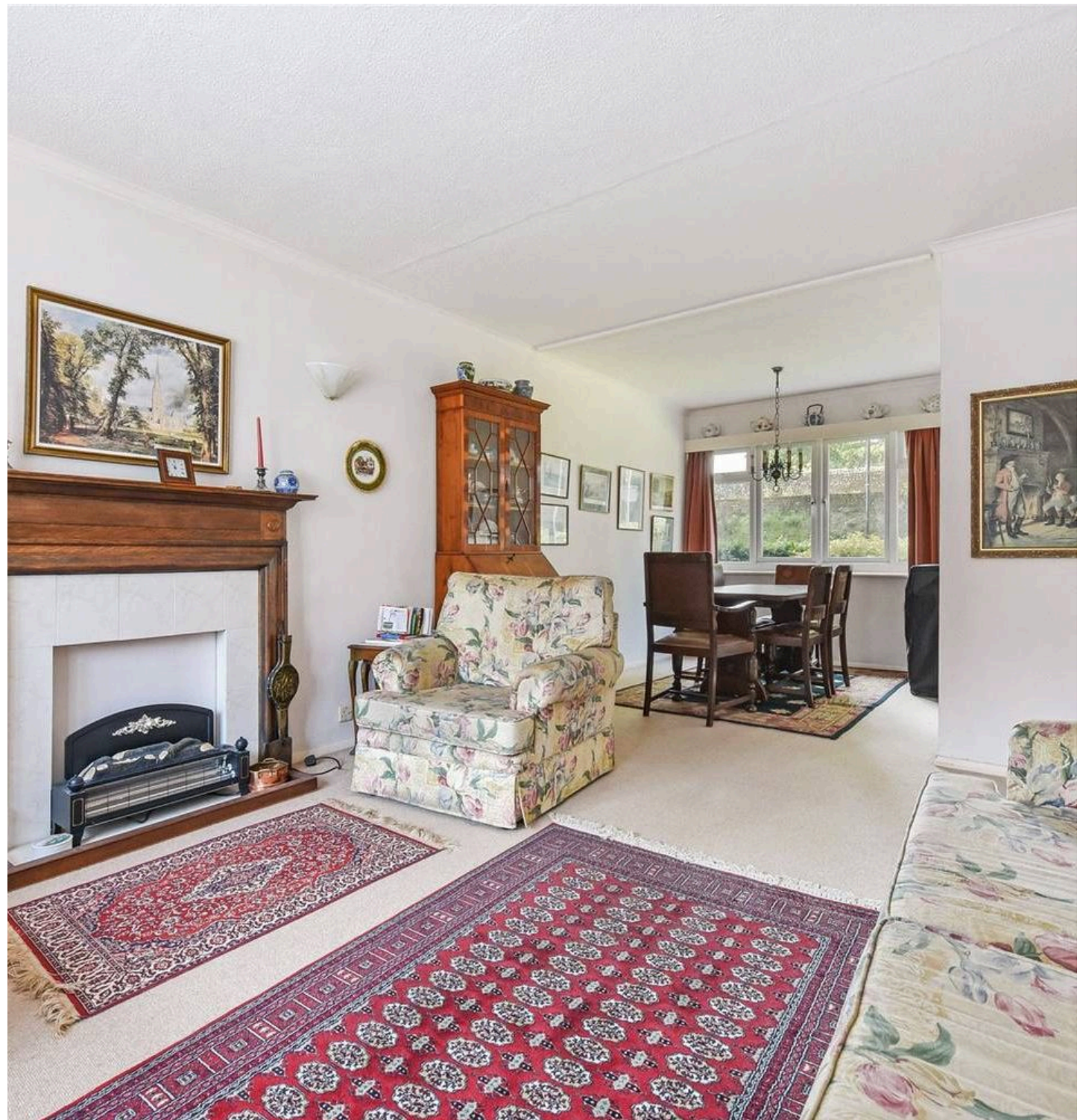


Council Tax band: TBD

Tenure: Leasehold

EPC Energy Efficiency Rating: E

EPC Environmental Impact Rating: E





STRIDE & SON

11, Regnum Court, PO19 1BZ

Approximate Gross Internal Area = 55.4 sq m / 596 sq ft



Produced for Stride & Son Estate Agent.



Ground Floor

Whilst every attempt has been made to ensure the accuracy of the floor plan contained here, measurements of doors, windows, rooms and any other items are approximate and no responsibility is taken for any error, omission, or misstatement. This plan is for illustrative purposes only and should be used as such by any prospective purchaser.

Created by Emzo Marketing 2025. (ID1211380)



Stride & Son

Stride & Son, 37 South Street - PO19 1EL

01243 782626

contact@strideandson.co.uk

www.strideandson.co.uk



STRIDE & SON
ESTATE AGENTS
CHARTERED SURVEYORS

This brochure is for guidance only and does not form part of any contract. While every effort is made to ensure accuracy, measurements, descriptions and details are approximate. Interested parties should carry out their own checks and inspections before making any decisions. Fixtures, fittings and appliances have not been tested and no warranty is given on their condition.



STRIDE & SON

