

for sale

**£175,000** Leasehold



## Manor Court Argyll Road Bournemouth BH5 1EB

Connells are pleased to present this immaculate TWO BEDROOM first floor apartment with SHARE OF FREEHOLD, located within ½ a mile of the award winning beaches. Boscombe high street is also within 500 meters, where there are popular shops, bars, cafes and restaurants. Offered with NO FORWARD CHAIN.

Residential Sales & Lettings | Mortgage Services |  
Conveyancing | Surveyors | Land & New Homes



# Property Details

## Approach

There is a communal garden area to the front and a secure communal entrance door, opens into the hall with stairs to the first floor landing.

## Entrance Hall

Secure entry phone. Airing cupboard with gas central heating boiler. Doors to all rooms.

## Sitting Room

14' 9" into bay x 13' 3" ( 4.50m into bay x 4.04m )

Double glazed bay window to front aspect. TV point. Radiator.

## Kitchen

7' 8" x 5' 1" ( 2.34m x 1.55m )

Double glazed window to the front aspect. Range of matching wall and base units with laminate worktops over. Stainless steel sink and drainer unit. Four ring gas burner hob with pull out extractor over with tiled splashbacks. Space and plumbing for washing machine. Under counter fridge. Tiled floor. Radiator.

## Bedroom One

14' 3" plus bay x 9' 1" ( 4.34m plus bay x 2.77m )

Double glazed window to front aspect. Radiator.

## Bedroom Two

10' 5" x 8' ( 3.17m x 2.44m )

Double glazed window to side aspect. Radiator. This double bedroom is currently used as a work from home space.

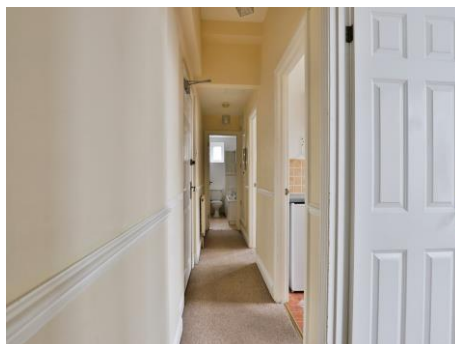
## Bathroom

Obscure glazed window to side aspect. Fitted with a three piece matching suite comprising panel enclosed bath with shower attachment over. Pedestal wash hand basin. Low level WC. Extractor unit. Tiled in principle areas.

## Outside

The allocated parking for the property is accessed via Horrace Road. The garden path leads to the communal front entrance.

## Agents Notes;







To view this property please contact Connells on

**T 01202 861 677**  
**E [ferndown@connells.co.uk](mailto:ferndown@connells.co.uk)**

37 Victoria Road  
FERNDOWN BH22 9HT

Property Ref: SBN306439 - 0004

Tenure:Leasehold EPC Rating: D

Council Tax Band: A Service Charge: 1200.00

Ground Rent: Ask Agent

This is a Leasehold property with details as follows; Term of Lease 125 years from 29 Sep 2000. Should you require further information please contact the branch. Please Note additional fees could be incurred for items such as Leasehold packs.

1. MONEY LAUNDERING REGULATIONS Intending purchasers will be asked to produce identification documentation at a later stage and we would ask for your co-operation in order that there will be no delay in agreeing the sale. 2. These particulars do not constitute part or all of an offer or contract. 3. The measurements indicated are supplied for guidance only and as such must be considered incorrect. Potential buyers are advised to recheck measurements before committing to any expense. 4. We have not tested any apparatus, equipment, fixtures, fittings or services and it is in the buyers interest to check the working condition of any appliances.

Connells Residential is registered in England and Wales under company number 1489613, Registered Office is Cumbria House, 16-20 Hockliffe Street, Leighton Buzzard, Bedfordshire, LU7 1GN. VAT Registration Number is 500 2481 05.

see all our properties at [www.connells.co.uk](http://www.connells.co.uk) | [www.rightmove.co.uk](http://www.rightmove.co.uk) | [www.zoopla.co.uk](http://www.zoopla.co.uk)