

# HUNTERS®

HERE TO GET *you* THERE

## Cruik Barn, Eastby

Price £545,000

Property Images



# HUNTERS®

HERE TO GET *you* THERE

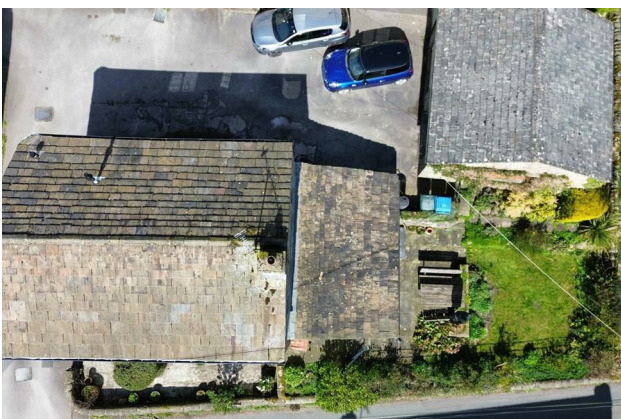
## Property Images



# HUNTERS®

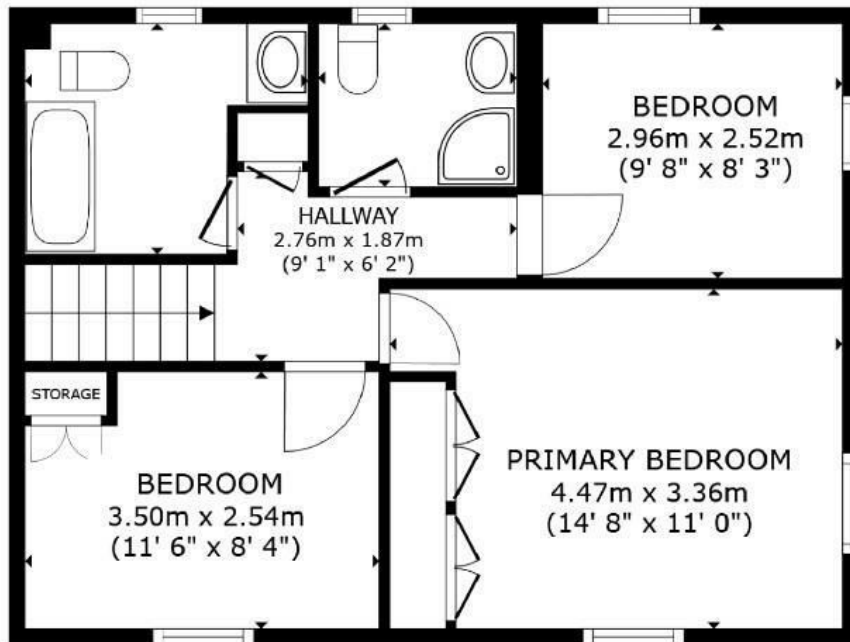
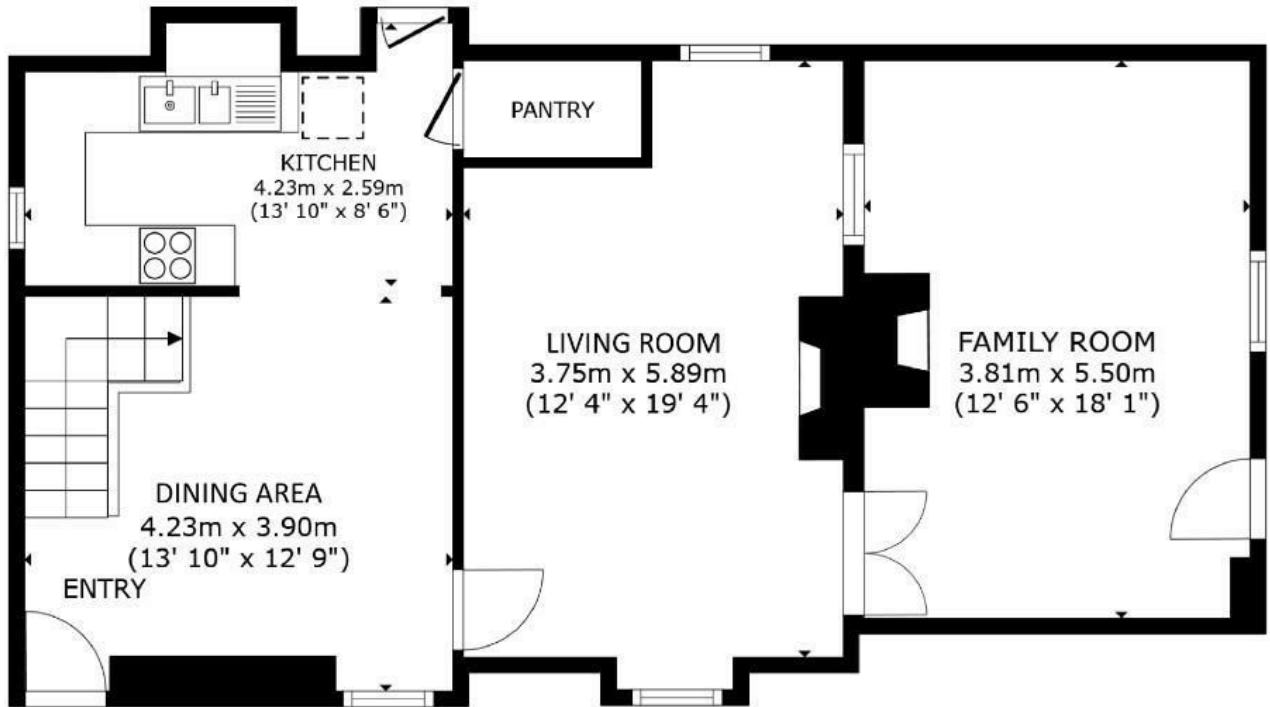
HERE TO GET *you* THERE

## Property Images



# HUNTERS®

HERE TO GET *you* THERE



SIZES AND DIMENSIONS ARE APPROXIMATE, ACTUAL MAY VARY.

Energy Efficiency Rating		Current	Potential
Very energy efficient - lower running costs			
(92 plus) <b>A</b>			
(81-91) <b>B</b>			
(69-80) <b>C</b>			79
(55-68) <b>D</b>		60	
(39-54) <b>E</b>			
(21-38) <b>F</b>			
(1-20) <b>G</b>			
Not energy efficient - higher running costs			
<b>England &amp; Wales</b>	EU Directive 2002/91/EC		



Located in the Dales village of Eastby, Cruik Barn presents a splendid opportunity to acquire a beautifully converted barn, steeped in history and character. Originally built in 1600, this detached former Dales barn offers a perfect blend of traditional charm and modern comfort.

The property features two inviting reception rooms, including a spacious living room having a multi-fuel stove, ideal for cosy evenings. The second reception room opens directly onto the delightful cottage-style garden, which showcases breathtaking views over the lush pasture land and the iconic Eastby Crag. The dining-kitchen is a true highlight, equipped with a feature an electric EVERHOT range cooker, and provides convenient access to the rear driveway and a single garage.

Accommodating three well-proportioned bedrooms, the property includes two double bedrooms and a large single bedroom, all of which offer lovely views of the surrounding countryside. The layout is completed with a house bathroom and a separate shower room, ensuring ample facilities for family living.

Set in a picturesque village location, this home is perfect for those who enjoy the great outdoors, with numerous walking trails right on your doorstep. For everyday conveniences, a village store / Post Office and two pubs are within a pleasant 15-minute stroll. Additionally, the vibrant market town of Skipton is just a six-minute drive away or a leisurely 45-minute walk.

With no forward chain, this property is ready for you to make it your own. Experience the tranquility and beauty of life in Eastby in The Yorkshire Dales National Park. This barn conversion is not just a home; it is a lifestyle waiting to be embraced.

### **On-Line-Bullet-Points**

- Detached former Dales barn • Solid construction, good order • Cottage garden, superb views • Spacious living room with multi-fuel-stove • Further reception room with garden access • Dining-kitchen featuring an EVERHOT range-cooker • 2 double, 1 single bedroom • House bathroom & seperate shower room • Village location, great walks • No forward chain