



KENSINGTON COURT, W8

£1,200,000

Two Bedrooms
Two Bathrooms
Open-plan
Private Patio
Period Building
Share of Freehold

@marshandparsons
marshandparsons.co.uk

MARSH &
PARSONS

ABOUT THE PROPERTY

A two bedroom, two bathroom flat with high ceilings in the heart of Kensington.

Kensington Court is ideally situated moments from the popular Kensington High Street and the prestigious Thackeray Street village, while the green open spaces of Hyde Park and Kensington Palace Gardens are also very nearby. High Street Kensington Underground Station (Circle and District lines) is located a 5 minute walk away and offers reliable London Underground services throughout London and to the City whilst the A4/M4 gives quick access towards Heathrow and the West.

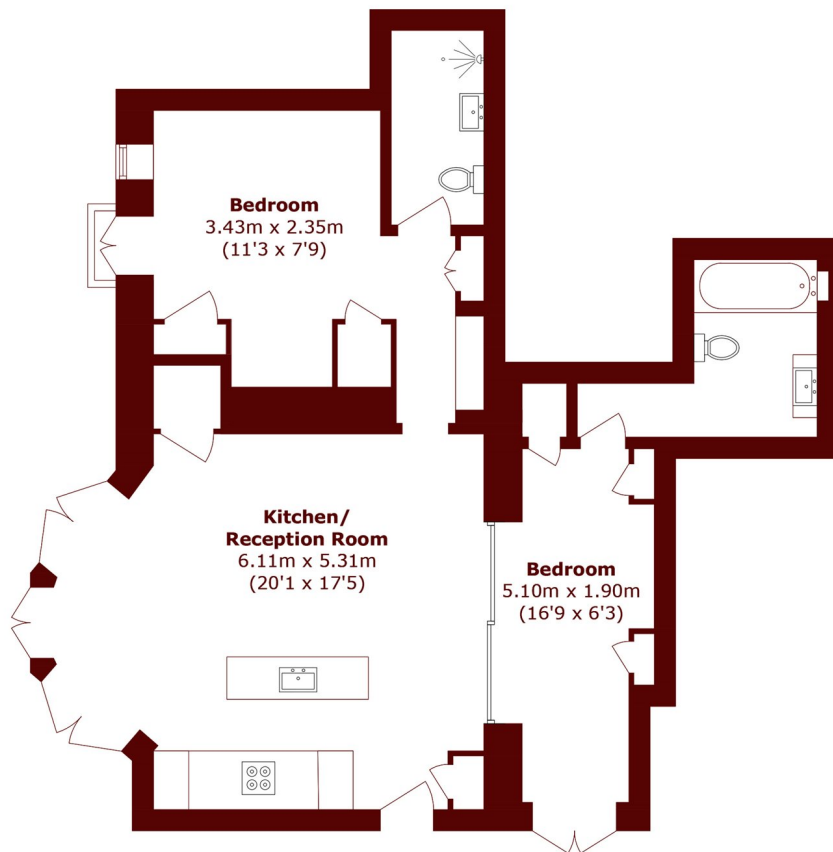








STEP INSIDE KENSINGTON COURT



Lower Ground Floor

Total Area (approx.): 70.3 sq. m (756.7 sq. ft)

Kensington
020 7368 4450

Energy Rating: C We aim to make our particulars both accurate and reliable. However, they are not guaranteed; nor do they form part of an offer or contract. If you require clarification on any points then please contact us, especially if you're traveling some distance to view. Please note that appliances and heating systems have not been tested and therefore no warranties can be given as to their good working order

**MARSH &
PARSONS**