



# Hereford House

Fulham Road, SW10

£2,250 per month  
(£519.23 per week)

This apartment is approx. 500 square feet and offers an airy open plan kitchen reception, double bedroom in the rear and full bathroom suite. The property further benefits ample storage, wood floors and high ceilings.

**CHESTERTONS**



# Hereford House

Fulham Road, SW10

- 2nd floor apartment
- Mansion block
- Approx. 500 square feet
- Newly decorated

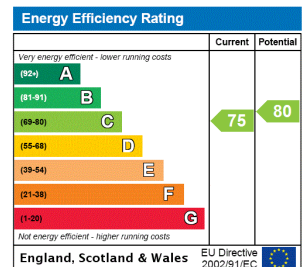


A beautiful 2nd floor, 1 bedroom mansion block apartment in Chelsea which has just been re-decorated.

This apartment is approx. 500 square feet and offers an airy open plan kitchen reception, double bedroom in the rear and full bathroom suite. The property further benefits ample storage, wood floors and high ceilings.

Hereford House is located on Fulham Road within a short walk of West Brompton Tube and all amenities of Fulham Road.

**Minimum Term:** 12 months  
**Deposit Required:** £2,596.15  
**Local Authority:** Royal Borough of Kensington & Chelsea  
**Council Tax Band:** C  
**EPC Rating:** C  
**Furnished**



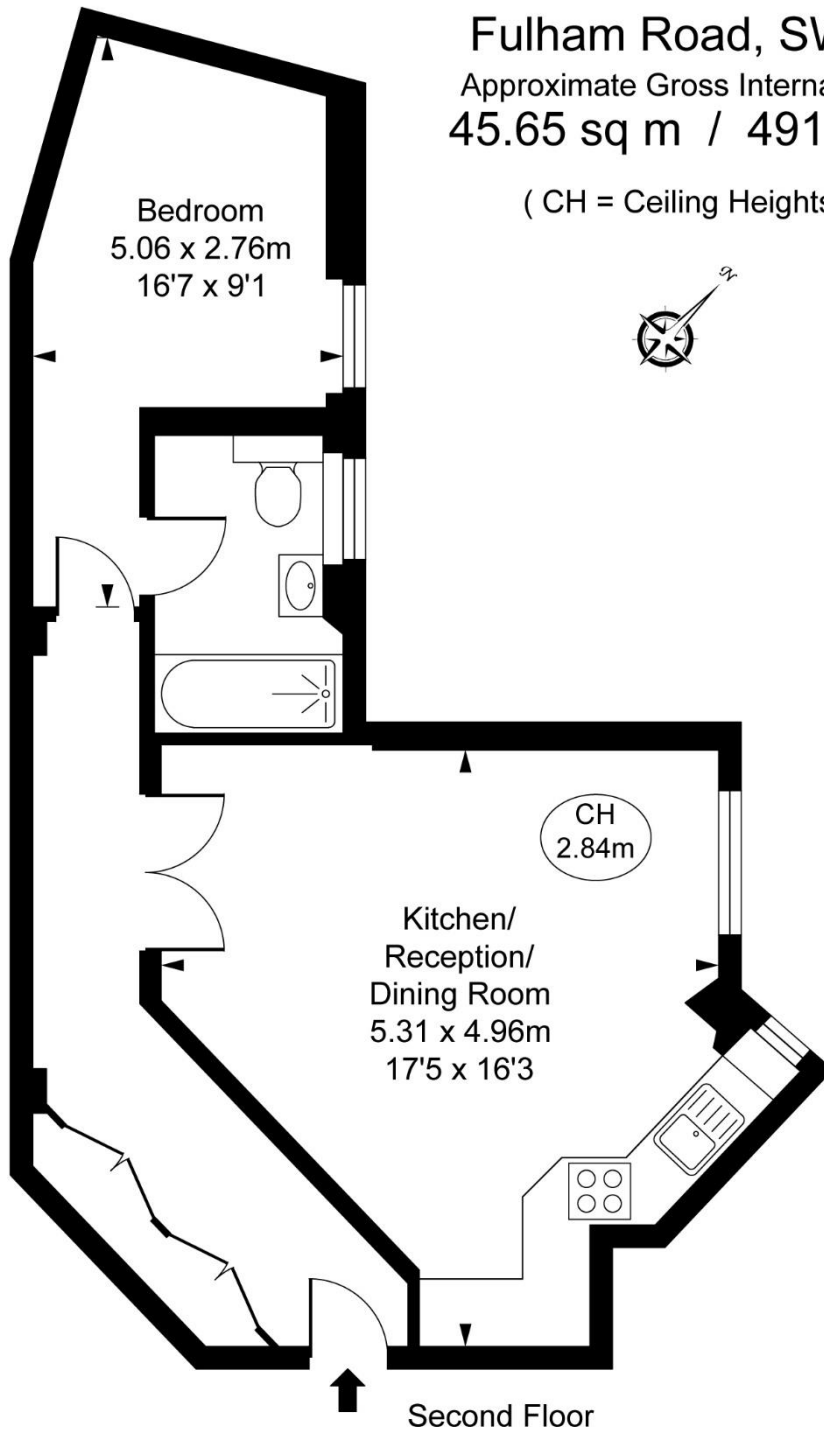
### Chestertons Chelsea Lettings

17 Cale Street  
 London  
 SW3 3QR  
 chelsealettingsusers@chestertons.co.uk  
 02075944750  
 chestertons.co.uk

Additional tenant charges apply (fees apply to non-AST tenancies only)  
 Tenancy Agreement Fee: £300  
 References per Tenant/Guarantor: £60  
 Inventory check (approx. £100 – £250 inc. VAT)  
 chestertons.co.uk/property-to-rent/applicable-fees

Hereford House,  
Fulham Road, SW10  
Approximate Gross Internal Area  
45.65 sq m / 491 sq ft

( CH = Ceiling Heights )



This plan is not to scale. It is for guidance and not for valuation purposes.  
All measurements and areas are approximate only, and have been prepared in accordance with the current edition of the RICS Code of Measuring Practice.  
© Fulham Performance

