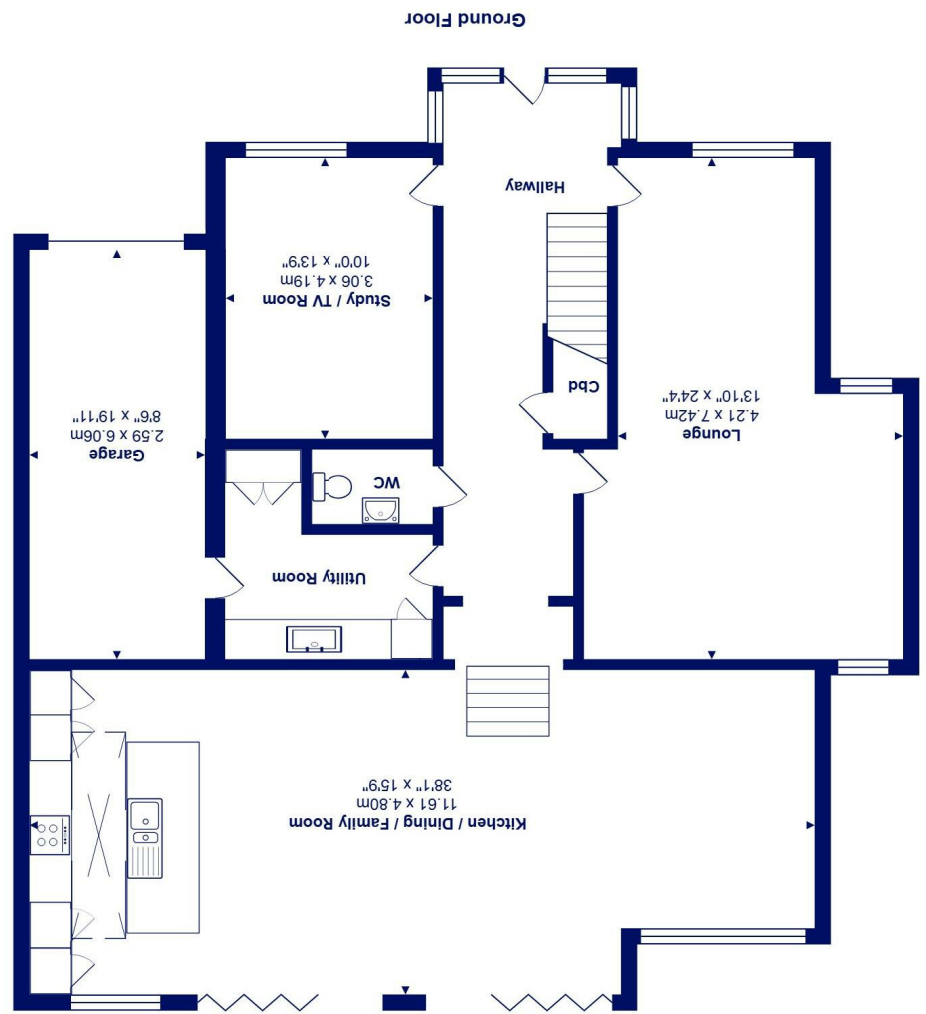
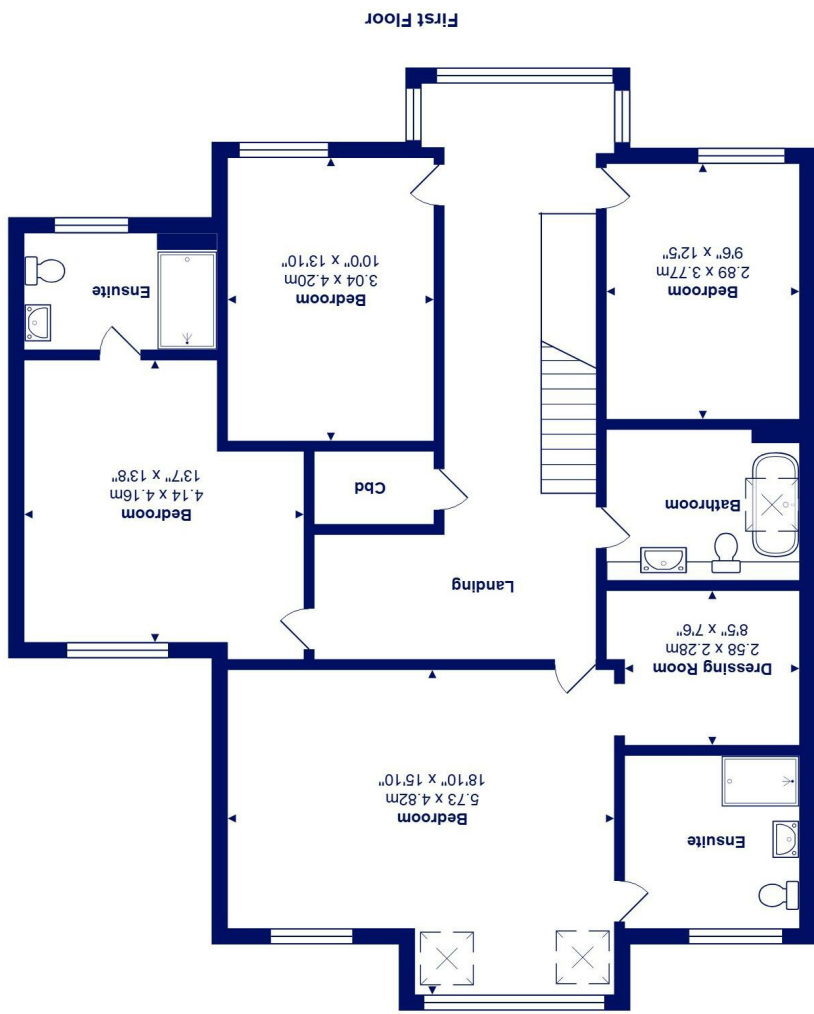




Total Area: 247.3 m² ... 2662 ft² (excluding garage)
All measurements are approximate and for display purposes only



17 Elphinstone Road, Highcliffe on Sea, BH23 5LL £1,395,000

Mitchells
1963 — TODAY

A stunning, new build home of approaching 2700 sq ft situated in a prestigious location with a large plot backing onto woodland and just a short stroll to the bustling village centre and beach. Finished to an exacting specification with designer fittings and impressive proportions, the stand out feature is the fantastic open plan kitchen/family room with extremely high ceilings and large glazed doors leading to the sun terrace. Ready now.

17 Elphinstone Road is an incredibly impressive home that offers style and space in abundance. The quality of the build is self evident with the kitchen and bathrooms fittings all by Porcelanosa and the house being sold with a new home warranty. The final finishes are beings done (mainly landscaping due to the poor weather so far this year- please note external photos have been enhanced with CGI) but we can offer a quick possession if required. Elphinstone Road is quiet and treelined with some very smart homes and offers a tranquil position yet still incredibly convenient for excellent shops and restaurants/cafes. It stands in the catchment area for both Highcliffe schools and is near to two top independent schools in Ballard and Durslton, both in New Milton.

- Fabulous, brand new home in a first class location with new home warranty
- Incredible open plan kitchen/family room running the whole width of the property with full height glazing taking you onto the sun terrace
- Designer kitchen with quartz worktops, large island perfect for entertaining and full appliance package
- Huge master bedroom suite with dressing room and luxuriously appointed bathroom
- Large guest bedroom with luxuriously appointed bathroom
- Two further double bedrooms on the first floor
- Spacious sitting room and separate TV lounge
- Utility room and integral garage with plenty of parking to the front
- Large, landscaped gardens with extensive sun terrace and lawn leading down to the ornamental stream and woodland
- Ready to view now!

EPC Rating Band: E
 Council Tax Band: F
 Freehold

