

RIVERHOMES

Vicarage Crescent
Battersea SW11

£950,000
Residential



Vicarage Crescent Battersea SW11

Moored in an exceptional riverside position beside Vicarage Crescent Gardens and just moments from the character and café culture of Battersea Square, A beautifully restored 30-metre 1935 Belgian Luxe motor barge offering an extraordinary blend of timeless continental elegance and refined waterside living. Meticulously upgraded for navigation and expertly redesigned by specialist boat builders, this remarkable vessel showcases an abundance of original Art Deco detailing, seamlessly paired with sophisticated contemporary finishes. From the moment you step aboard, an unmistakable sense of character, craftsmanship and tranquillity, a floating home designed around the rhythm and beauty of life on the Thames. At the heart of the vessel is the stunning mahogany-panelled wheelhouse, where panoramic river views provide a constantly changing backdrop across the water. The generous open-plan reception and dining space is both elegant and inviting, ideal for entertaining or quiet evenings moored along the riverbank, while the fully equipped galley kitchen has been thoughtfully designed for modern living.

KEY FEATURES

3 bedrooms

3 bathrooms

Belgian Luxe motor barge

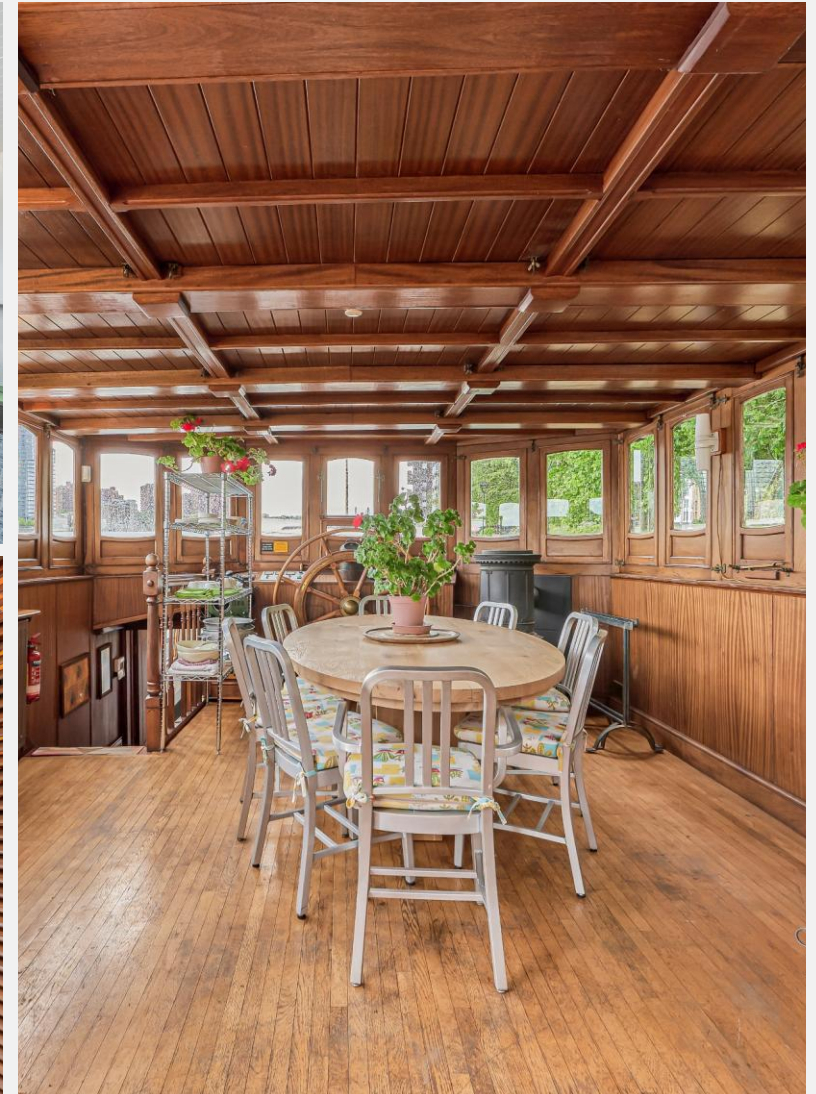
Open-plan reception and dining space

Walking distance to Battersea Square

Excellent transport links from Clapham Junction

Mooring charges £5,468.64 per annum approx.

Service charges £1,000 per annum approx.





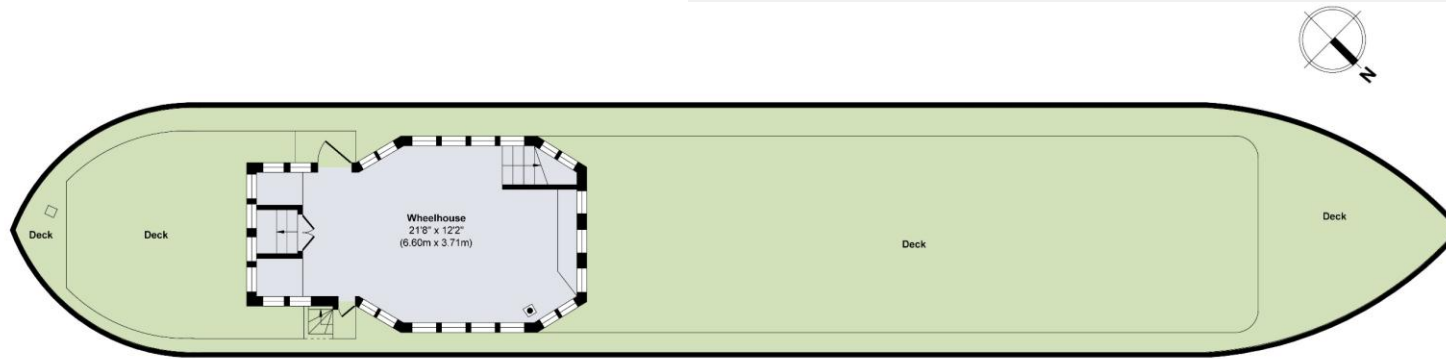
RIVERHOMES

South West London Branch
1 – 3 Lower Richmond Road
London
SW15 1EJ

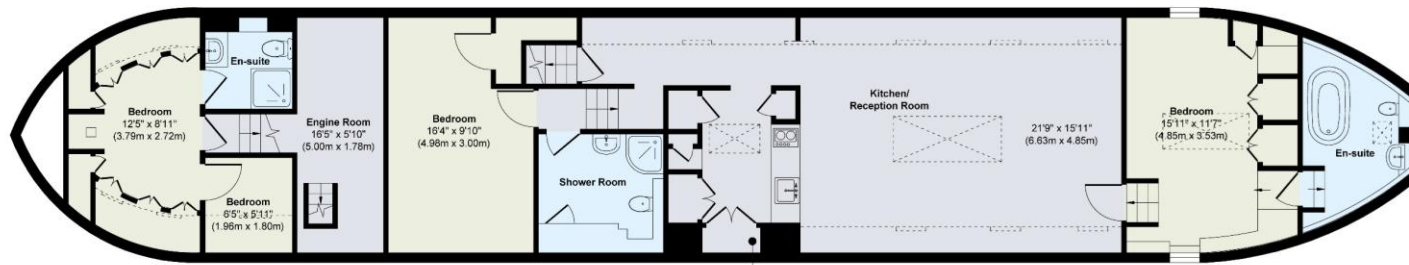
020 8788 6000
www.riverhomes.co.uk

KEY INFORMATION

Local authority:	London Borough of Wandsworth
Internal area:	1,666 sq. ft. / 154,8 sq. m.
No. of bedrooms:	3
Council tax band:	D - £1,020.35 per annum approx.
Mooring charges:	£5,468.64 per annum approx.
Service charge:	£1,000 per annum approx.



Upper Deck
Approximate Floor Area
248 sq. ft
(23.02 sq. m)



Lower Deck
Approximate Floor Area
1418 sq. ft
(131.78 sq. m)

World Waterside Ltd trading as riverhomes for themselves and its clients give notice that 1: They are not authorised to make or give any representations or warranties in relation to the property either here or elsewhere, either on their own behalf or on behalf of their client or otherwise. 2: These particulars do not form part of any offer or contract and must not be relied upon as statements or representations of fact. Any areas, measurements or distances are approximate. The text, photographs and plans are for guidance only and are not necessarily comprehensive. 3: It should not be assumed that the property has all necessary planning, building regulation or other consents and any services, equipment or facilities have not been tested. 4: Lease details, service charges, ground rent (where applicable) and council tax are given as a guide only and should be checked and confirmed by your Solicitor prior to exchange of contracts. 5: They assume no responsibility and any intending purchasers or tenants must satisfy themselves by inspection or otherwise as to the correctness of each of the statements contained within these particulars. If you require clarification of any points please contact us.