



Wynches Barn, Much Hadham

SG10 6BA

Price Guide £1,850,000



stevenoates.com



Wynches Barn Much Hadham, Hertfordshire, SG10 6BA

Detached Modern Character Home in 1.55 Acre Plot - An exceptionally well finished modern renovation of a detached barn conversion offering the perfect blend of modern living with a gentle touch of character. The property has been thoughtfully designed with light filled accommodation arranged over two floors with stunning living spaces. The ground floor comprises of a spacious entrance hall, impressive partially vaulted main living room, 2 additional sitting rooms and an impressive kitchen/dining room. There is also a large utility room, downstairs guest wc, 2 double bedrooms and a shower room making flexible for multi-generational living. On the first floor, there are 4 bedrooms, a family bathroom and a large en-suite bathroom and dressing to the main bedroom. Externally, the property is set within a gated plot of 0.4 acres with an integral garage, brick store and beautifully landscaped gardens with include a natural swimming pond and an additional 1.15 acre paddock directly opposite with a small stable block.

Situated along a idyllic private drive nestled amongst beautiful countryside on the outskirts of this highly sought-after village, the property enjoys beautiful views over open countryside whilst being within an easy reach of the village amenities. The charming village of Much Hadham offers a strong sense of community and a range of well-supported facilities, including an excellent primary school, a popular village pub, a convenience shop, a doctor's surgery, and a dental practice. The nearby market towns of Ware, Hertford, and Bishop's Stortford are all easily accessible, providing a wider selection of shops, restaurants, and leisure options. Each town also offers mainline train stations with fast and direct services into London, as well as access to highly regarded state and independent schools.



70 Fore Street, Hertford, Hertfordshire, SG14 1BY



70 Fore Street, Hertford, Hertfordshire, SG14 1BY





70 Fore Street, Hertford, Hertfordshire, SG14 1BY



70 Fore Street, Hertford, Hertfordshire, SG14 1BY



70 Fore Street, Hertford, Hertfordshire, SG14 1BY



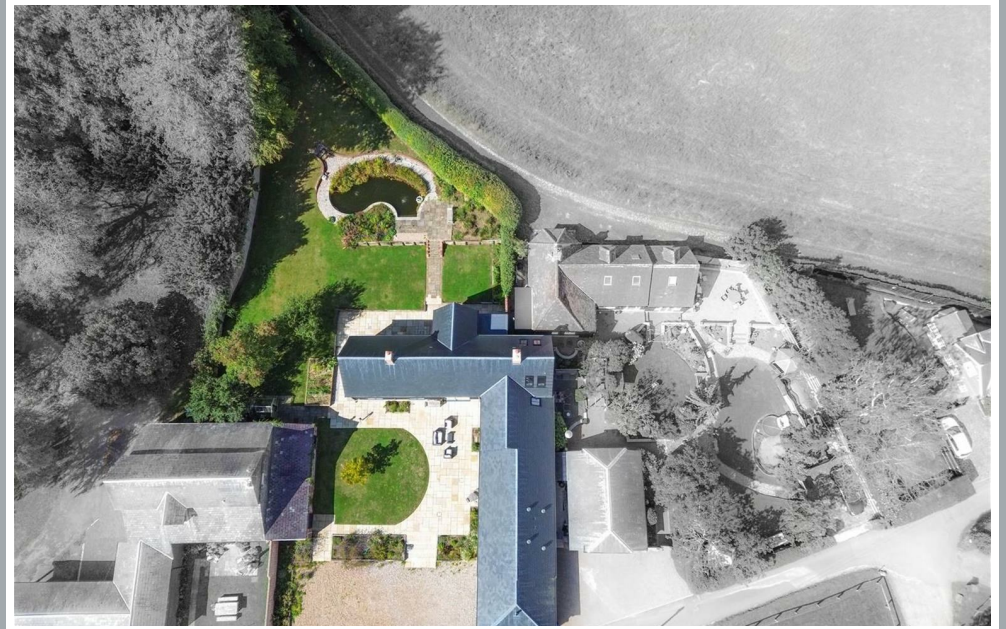
70 Fore Street, Hertford, Hertfordshire, SG14 1BY



70 Fore Street, Hertford, Hertfordshire, SG14 1BY



70 Fore Street, Hertford, Hertfordshire, SG14 1BY



70 Fore Street, Hertford, Hertfordshire, SG14 1BY



70 Fore Street, Hertford, Hertfordshire, SG14 1BY



70 Fore Street, Hertford, Hertfordshire, SG14 1BY



70 Fore Street, Hertford, Hertfordshire, SG14 1BY



70 Fore Street, Hertford, Hertfordshire, SG14 1BY



Approx gross internal floor area 344 sqm (3700 sqft) excluding Voids, including Garage and Storage Rooms

These particulars, whilst believed to be accurate are set out as a general outline only for guidance and do not constitute any part of an offer or contract. Intending purchasers should not rely on them as statements of representation of fact, but must satisfy themselves by inspection or otherwise as to their accuracy. No person in this firm's employment has the authority to make or give any representation or warranty in respect of the property.



stevenoates.com