



Church Road, Whimble, Exeter, EX5 2TA

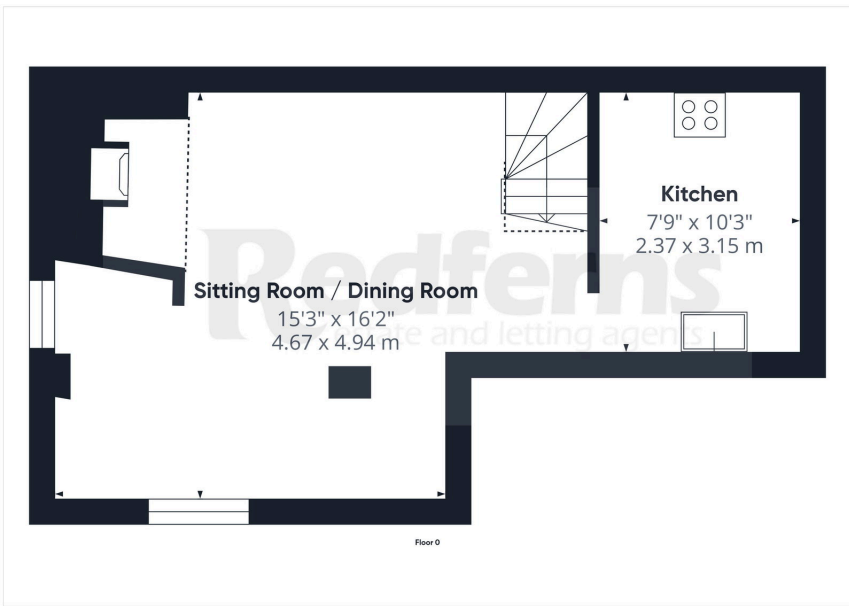
Guide Price £199,000

🏠 1 🚗 1 🚗 1



- Charming characterful cottage
- Well equipped kitchen
- Large double bedroom
- Secluded garden
- No chain
- Spacious open plan sitting room/dining room
- Integrated appliances
- Luxury Bathroom with seperate shower
- Tucked away close to the village centre
- Central heating and uPVC double glazing





A spacious and charming detached cottage, with a secluded garden situated in the heart of this thriving and popular village. Offered with no onward chain.

Energy Efficiency Rating		
	Current	Potential
Very energy efficient - lower running costs		
(92 plus) A		
(81-91) B		83
(69-80) C		
(55-68) D		
(39-54) E	41	
(21-38) F		
(1-20) G		
Not energy efficient - higher running costs		
England & Wales	EU Directive 2002/91/EC	

Ottery St. Mary | 01404 814 306
 Exeter | 01392 984 511
 Sidmouth | 01395 512 544

www.redfernsproperty.co.uk | sales@redfernsproperty.co.uk

