



House - Mid Terrace (EPC Rating: C)

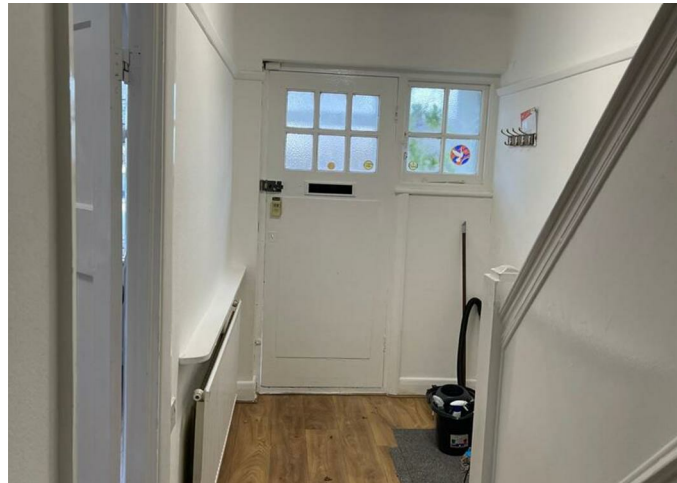
14 THE CLOSE, MITCHAM, CR4 4LS

Per month

£2,500 Per

FEATURES

- 3 spacious bedrooms
- 2 modern bathrooms
- Cosy reception room
- Mid-terrace house
- Built in 1932
- Located in The Close, Mitcham
- 1,076 sq ft of space
- Family-friendly area



3 Bedroom House - Mid Terrace

located in Mitcham

Nestled in the charming area of The Close, Mitcham, this delightful mid-terrace house offers a perfect blend of comfort and convenience. Spanning an impressive 1,076 square feet, the property boasts three well-proportioned bedrooms, making it an ideal home for families or those seeking extra space.

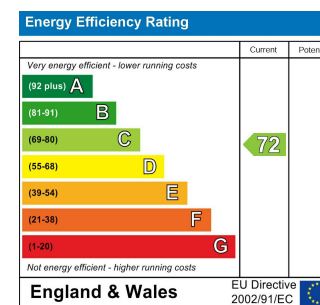
Upon entering, you are welcomed into a spacious reception room that provides a warm and inviting atmosphere, perfect for both relaxation and entertaining guests. The layout of the house is thoughtfully designed, ensuring that each room flows seamlessly into the next.

The property features two modern bathrooms, which add to the convenience of daily living, especially for larger households. The house, built in 1932, retains a sense of character while offering the potential for personal touches and updates to suit your taste.

Call us on

Council Tax Band

D



Agents Note: Whilst every care has been taken to prepare these particulars, they are for guidance purposes only. All measurements are approximate and are for general guidance purposes only and whilst every care has been taken to ensure their accuracy, they should not be relied upon and potential buyers are advised to recheck the measurements.

