



Richmond Road, KT2

£2,100,000

Dexters are delighted to introduce for sale a fully let "turnkey" investment opportunity located in Kingston upon Thames featuring a total of six self-contained flats (4nos. three-bedroom and 2nos. two-bedrooms).

Situated within the Royal Borough of Kingston Upon Thames, the properties are located within 1.4 kilometres of Kingston Town Centre featuring a plethora of shops, coffee shops, cafés, restaurants and department stores including The Bentall Centre Shopping Centre, John Lewis & Partners and Fenwick's.

Kingston railway station is within 650 metres providing direct trains to London Waterloo.

135 Richmond Road

Flat 1 is a three-bedroom flat, with the main bedroom benefiting from an en-suite bathroom.

All three bedrooms are currently let on separate Assured Shorthold Tenancy Agreements (ASTs).

Flat 2 is a three-bedroom flat.

All three bedrooms are currently let on separate Assured Shorthold Tenancy Agreements (ASTs).

137 Richmond Road

Flat 1 is a three-bedroom flat, with the main bedroom benefiting from an en-suite bathroom.

All three bedrooms are currently let on separate Assured Shorthold Tenancy Agreements (ASTs).

Flat 2 is a two-bedroom flat with the whole property let via a single Assured Shorthold Tenancy Agreement (AST).

139 Richmond Road

Flat 1 is a three-bedroom flat, with the main bedroom benefiting from an en-suite bathroom.

All three bedrooms are currently let on separate Assured Shorthold Tenancy Agreements (ASTs).

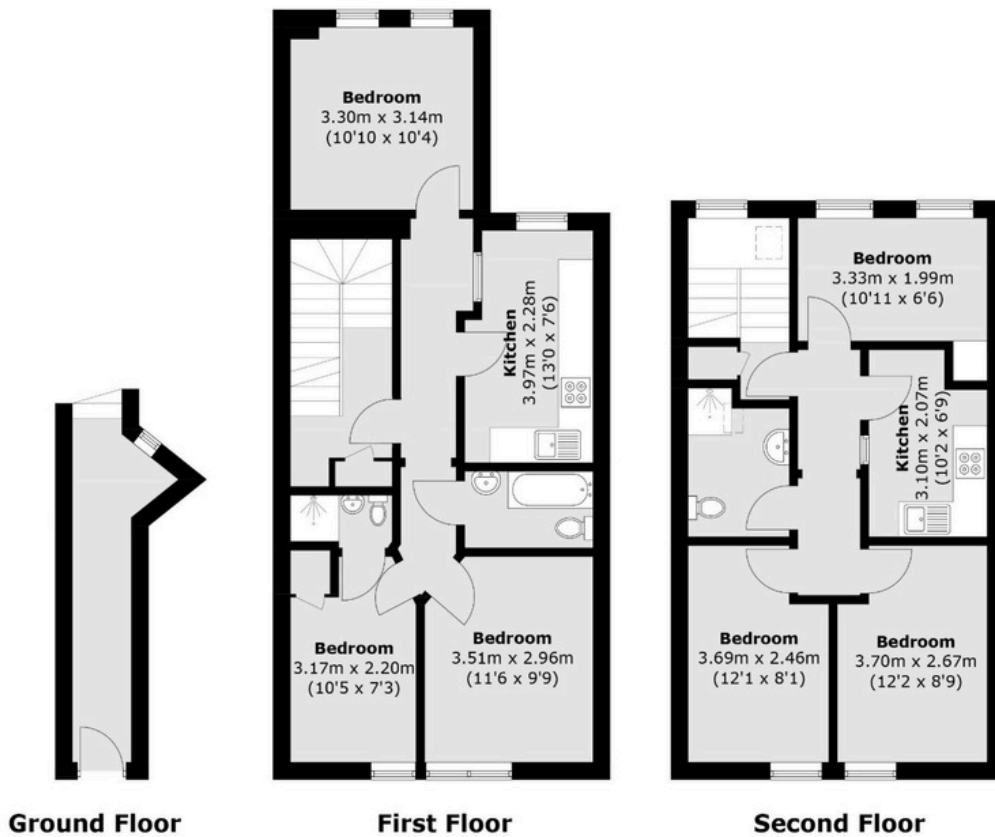
Flat 2 is a two-bedroom flat with the whole property let via a single Assured Shorthold Tenancy Agreement (AST).

Combined Total Passing Rental Income £11,500 per calendar month / £138,000 per annum, which represents a Gross Yield of 6.57% at the Guide Price.

Features

- Freehold sale
- 4nos. three-bedroom flats
- 2nos. two-bedroom flats
- Ensuite bathroom
- Sold with tenants in situ

135 Richmond Road, Kingston upon Thames KT2 5BZ
Floor Plan



Total area (approx.): 114.7 sq. m (1,234.6 sq. ft)

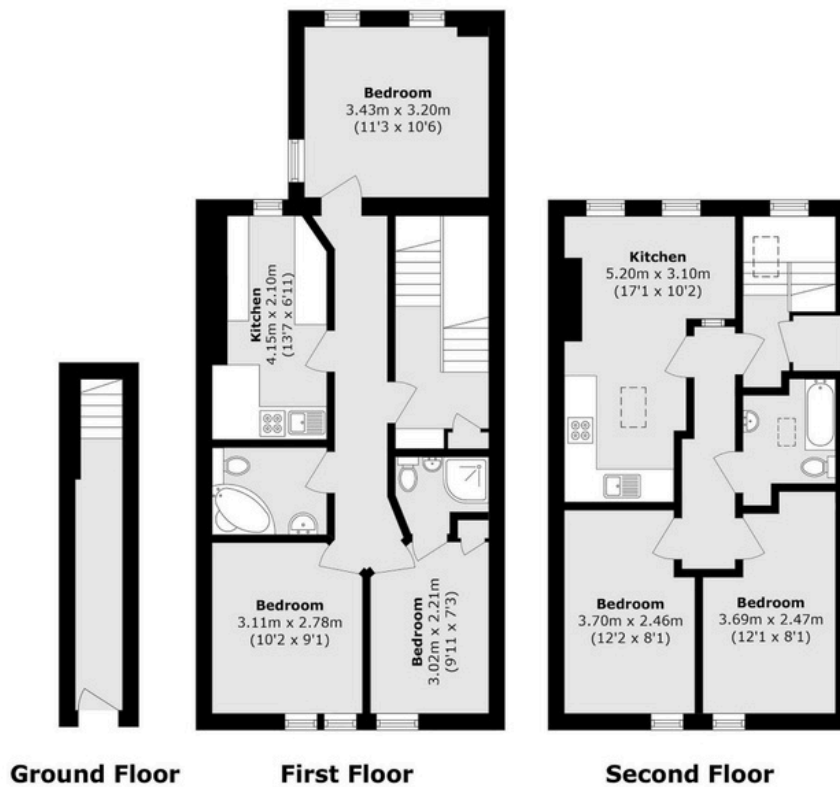


Registered office: Mayfair Showroom, 66 Grosvenor Street, London, W1K 3JL.
 Dexters London Limited, Company Registration Number 04160511

dexters.co.uk

Property sales, lettings and management. Development and investment advisors. Specialist residential Chartered Surveyors.

137 Richmond Road, Kingston upon Thames KT2 5BZ Floor Plan



Total area (approx.): 109.3 sq. m (1176.5 sq. ft)

139 Richmond Road, Kingston upon Thames KT2 5BZ Floor Plan



Total area (approx.): 108.2 sq. m (1164.6 sq. ft)



Registered office: Mayfair Showroom, 66 Grosvenor Street, London, W1K 3JL.
Dexters London Limited, Company Registration Number 04160511

dexters.co.uk

roperty sales, lettings and management. Development and investment advisors. Specialist residential Chartered Surveyors.