

## Matthew Parker Street, SW1H

### £800,000

Within close proximity to St James's Park, this split level residence provides double ceiling height and modern living accommodation. A distinguished Berkeley group development in prime central London, offering 24-hour concierge, a mezzanine en suite with expansive sash windows, and a sleek separate kitchen for elevated living.

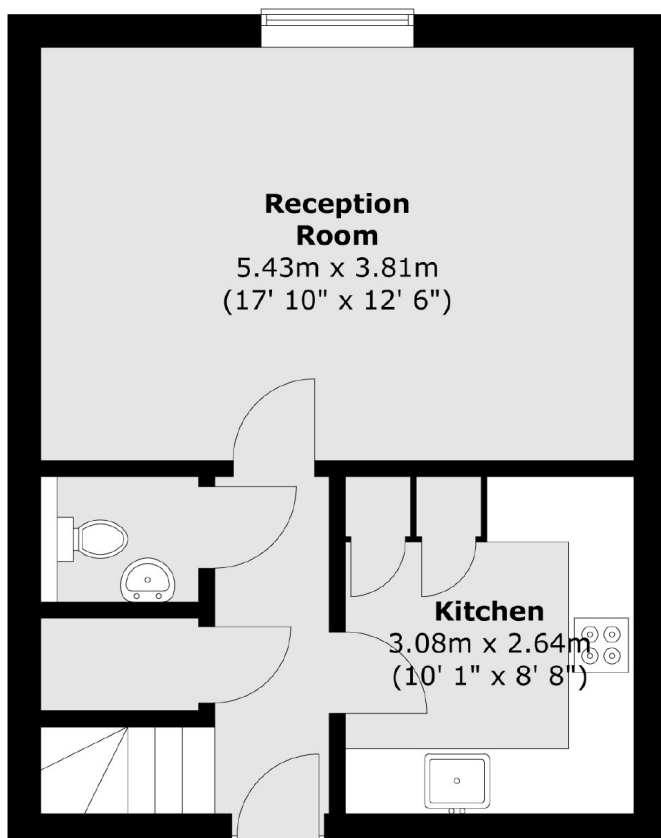
Matthew Parker Street enjoys a prime location close to St James's Park and Green Park with nearby transport links.

### Features

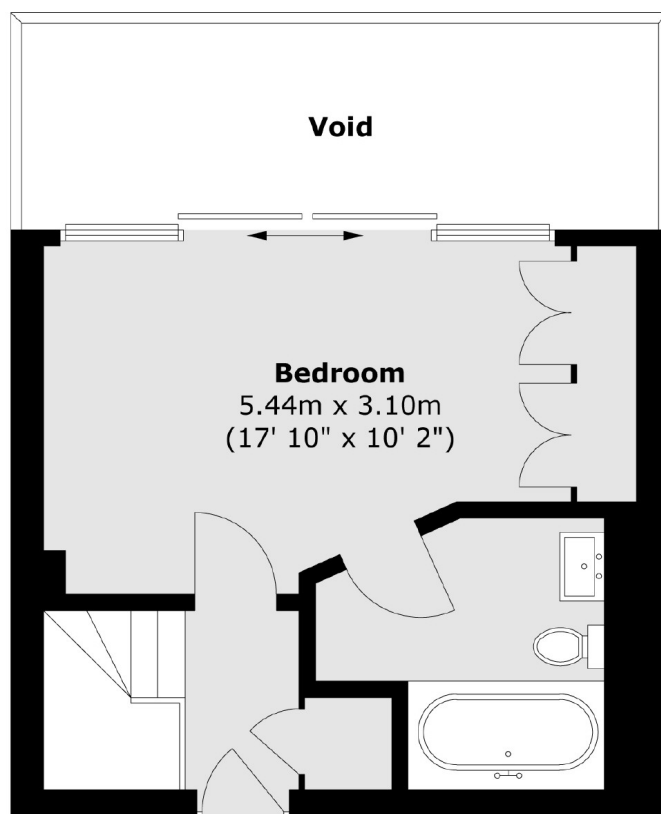
- One Bedroom
- Separate Kitchen
- Split Level
- Concierge
- Excellent Condition
- St. James's Park

# Matthew Parker Street, London, SW1H

## Second Floor



## Third Floor



Total area (approx.) : 66 sq. m (710 sq. ft)  
(Excluding void)