



GROVE END HOUSE, GROVE END ROAD

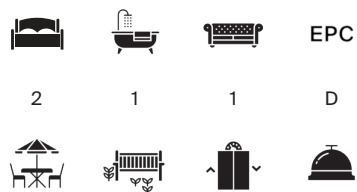
St John's Wood NW8



GROVE END HOUSE

A BEAUTIFULLY PRESENTED TOP (EIGHTH) FLOOR APARTMENT

Situated within this popular purpose-built block located on Grove End Road NW8. This delightful two bedroom apartment features a private terrace with stunning south-west-facing views. Other benefits include passenger lifts, portorage and attractive communal gardens.



Local Authority: City of Westminster

Council Tax band: E

Tenure: Leasehold with approximately 129 years remaining

Ground rent: A peppercorn, if demanded.

Service charge: £5,185 per annum (paid half-yearly), reviewed biannually. The next review date is December 2025.

Asking Price: £750,000



GROVE END HOUSE, ST JOHN'S WOOD NW8

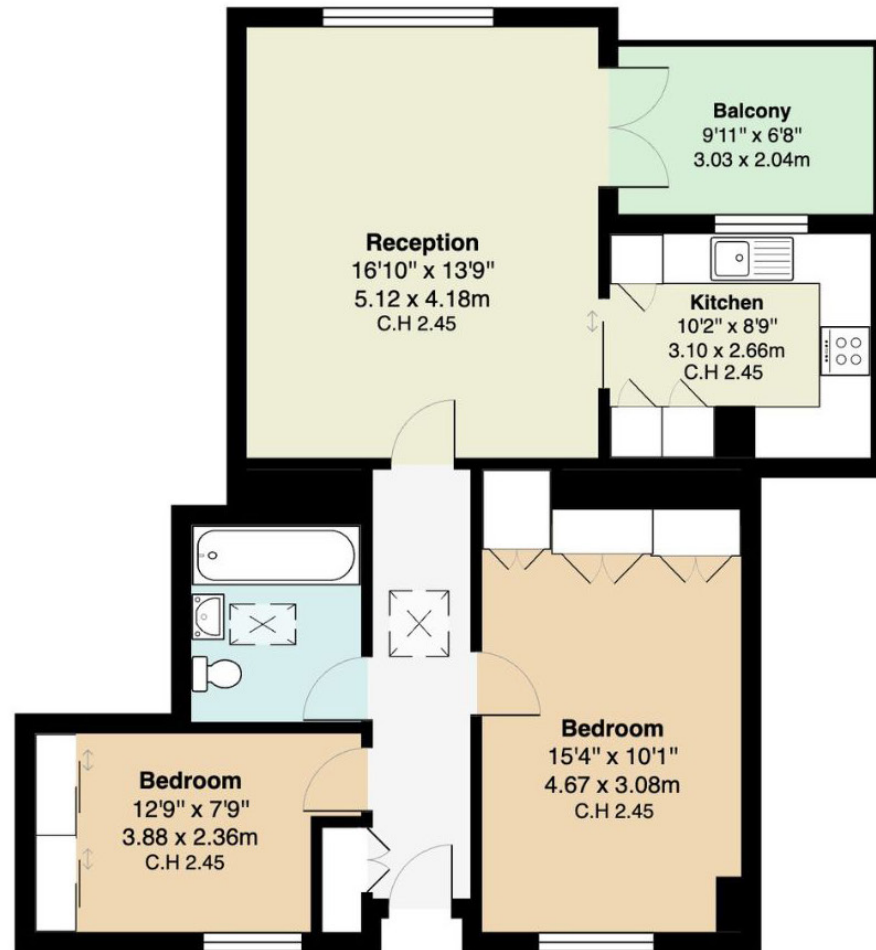
The kitchen has heat-resistant quartz countertops, Schuller cupboards, a steam oven and a warming drawer. The principal bedroom has a double-depth fitted wardrobe (on the left), and the bathroom features a stunning skylight that offers plenty of natural light. Smart heating is connected using TADO.

Grove End House is a popular purpose-built portered block with secure entry located on Grove End Road, which continues the world-famous Abbey Road. The American School in Loudoun Road is very popular, with many executives relocating to London with their families. It is near the green spaces of Regent's Park, Primrose Hill, and Lord's Cricket Ground. Both Maida Vale (Bakerloo Line) and St John's Wood (Jubilee Line) Underground Stations are 0.5 miles away, providing access to Central London, Waterloo, Canary Wharf and beyond.









8th floor

Approximate Gross Internal Area = 69 sq m / 743 sq ft

This plan is for layout guidance only. Not drawn to scale unless stated. Windows and door openings are approximate. Whilst every care is taken in the preparation of this plan, please check all dimensions, shapes and compass bearings before making any decisions reliant upon them. (ID767266)

We would be delighted
to tell you more.

Tim Perks

+44 20 7871 5065

tim.perks@knightfrank.com

Knight Frank St John's Wood

5-7 Wellington Place

London NW8 7PB

[knightfrank.co.uk](https://www.knightfrank.co.uk)

Your partners in property

1. Particulars: These particulars are not an offer or contract, nor part of one. You should not rely on statements given by Knight Frank in the particulars, by word of mouth or in writing ("information") as being factually accurate about the property, its condition or its value. Neither Knight Frank nor any joint agent has any authority to make any representations about the property, and accordingly any information given is entirely without responsibility on the part of Knight Frank. 2. Material Information: Please note that the material information is provided to Knight Frank by third parties and is provided here as a guide only. While Knight Frank has taken steps to verify this information, we advise you to confirm the details of any such material information prior to any offer being submitted. If we are informed of changes to this information by the seller or another third party, we will use reasonable endeavours to update this as soon as practical. 3. Photos, Videos etc: The photographs, property videos and virtual viewings etc. show only certain parts of the property as they appeared at the time they were taken. Areas, measurements and distances given are approximate only. 4. Regulations etc: Any reference to alterations to, or use of, any part of the property does not mean that any necessary planning, building regulations or other consent has been obtained. A buyer must find out by inspection or in other ways that these matters have been properly dealt with and that all information is correct. 5. Fixtures and fittings: A list of the fitted carpets, curtains, light fittings and other items fixed to the property which are included in the sale (or may be available by separate negotiation) will be provided by the Seller's Solicitors. 6. VAT: The VAT position relating to the property may change without notice. 7. To find out how we process Personal Data, please refer to our Group Privacy Statement and other notices at <https://www.knightfrank.com/legals/privacy-statement>.

Particulars dated June 2025. Photographs and videos dated June 2025. All information is correct at the time of going to print. Knight Frank is the trading name of Knight Frank LLP. Knight Frank LLP is a limited liability partnership registered in England and Wales with registered number OC305934. Our registered office is at 55 Baker Street, London W1U 8AN. We use the term 'partner' to refer to a member of Knight Frank LLP, or an employee or consultant. A list of members names of Knight Frank LLP may be inspected at our registered office. If you do not want us to contact you further about our services then please contact us by either calling 020 3544 0692, email to marketing.help@knightfrank.com or post to our UK Residential Marketing Manager at our registered office (above) providing your name and address.