

Hamlet Gardens, W6

£215,000

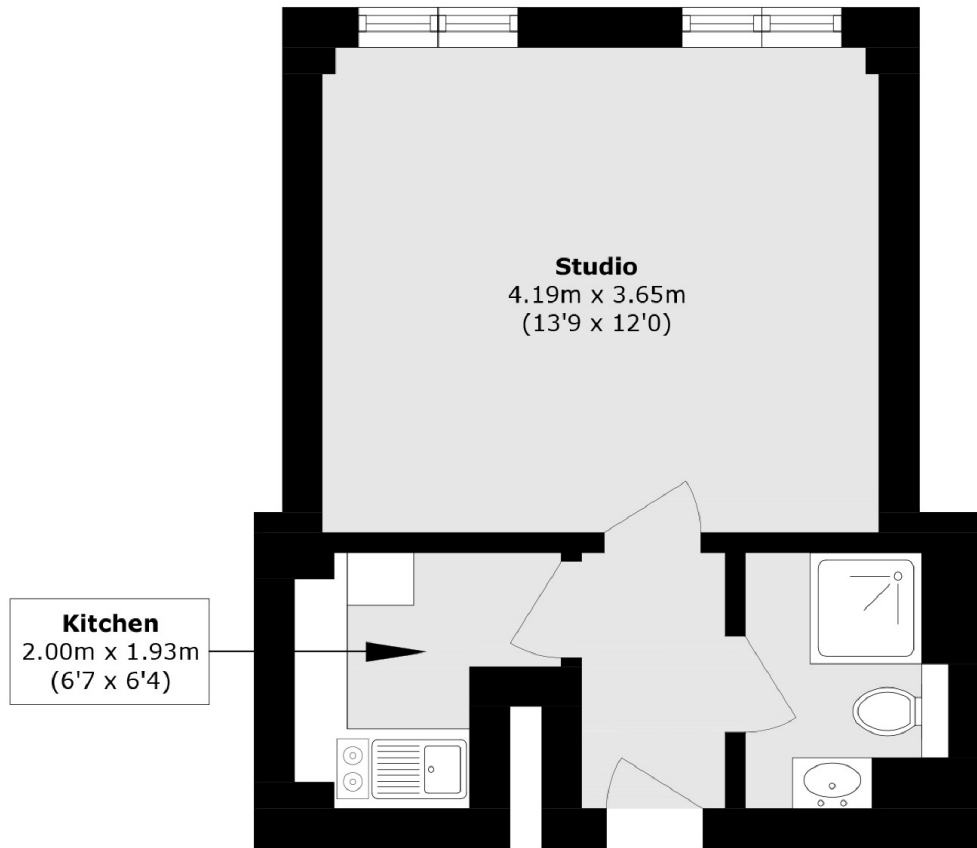
This lovely light studio flat is located in a portered block along the beautiful road of Hamlet Gardens just around the corner from Ravenscourt Park. It has been kept as a wonderful home and is ideal for first time buyers or as a rental investment.

Kings Court is ideally placed for access to the host of amenities at Hammersmith Broadway and King Street, and only moments from the green open spaces of Ravenscourt Park.

Features

- Studio Apartment
- Bright Flat
- Porter
- Lift
- Ravenscourt Park
- No Chain

Hamlet Gardens, London, W6



Total area (approx.): 24.5 sq. m (263.7 sq. ft)