



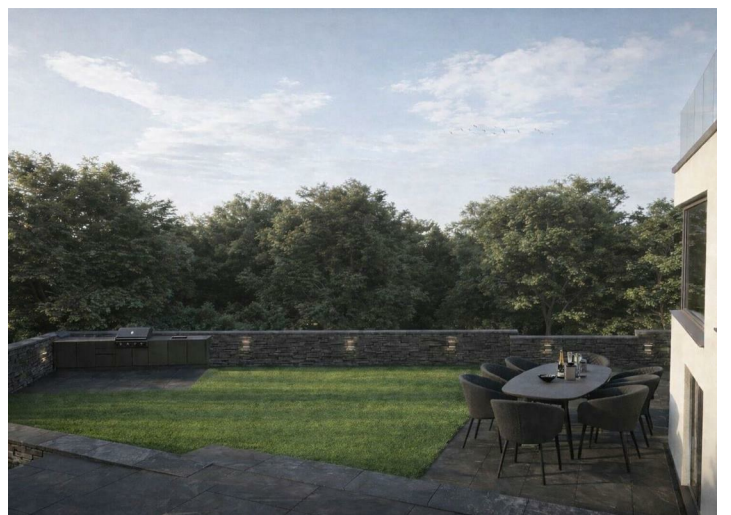
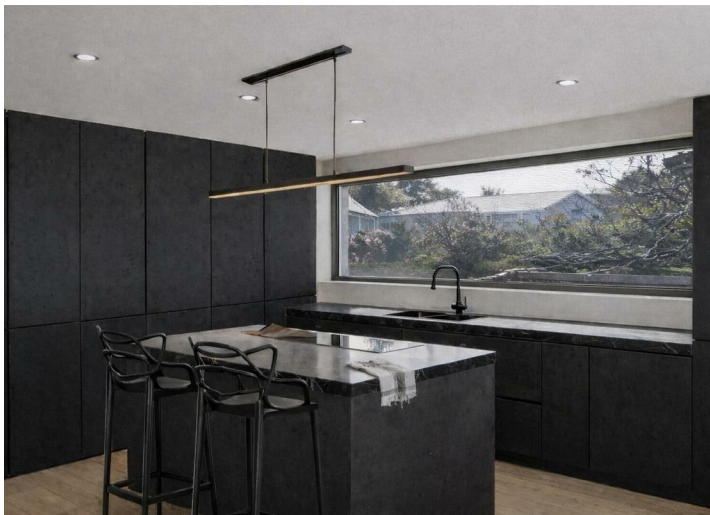
Trefusis View, The Park, Kernick Road, Penryn, TR10 8NL

£1,200,000

An outstanding, one-of-a-kind architect designed residence of undeniable quality and craftsmanship, now nearing completion, extending over 3,000 ft sq of beautifully refined accommodation, including 6 bedrooms, 5 bath/shower rooms, 3 reception rooms, and 2 kitchens. Both versatile in layout and striking in appearance this is, without question, a statement home of modern elegance on a scale rarely seen in recent years within the historic market town of Penryn.

Key Features

- Landmark architect designed new home
- Exceptional views, glass panelled balconies
- Landscaped and private rear garden
- Exceptional quality fixtures and fittings
- 6 bedrooms, 5 bath/shower rooms
- Versatile accommodation set over 3 floors
- Double garage with additional driveway parking
- Predicted EPC rating B



THE ACCOMMODATION COMPRISES

LOWER GROUND FLOOR

HALLWAY

OPEN-PLAN KITCHEN/LIVING/DINING ROOM

PRINCIPAL BEDROOM

EN-SUITE SHOWER ROOM

DOUBLE BEDROOM/SNUG

MAIN BATHROOM

UTILITY/PLANT ROOM

GROUND FLOOR

RECEPTION HALLWAY/ENTRANCE

CLOAKROOM/WC

KITCHEN/FAMILY ROOM

BEDROOM

EN-SUITE SHOWER ROOM

FIRST FLOOR

LANDING

PRIMARY BEDROOM

DRESSING AREA

EN-SUITE SHOWER ROOM

MAIN BATH/SHOWER ROOM

DOUBLE BEDROOM

DOUBLE BEDROOM

DOUBLE BEDROOM

THE EXTERIOR

DRIVEWAY

DOUBLE GARAGE

LANDSCAPED REAR GARDEN

GENERAL INFORMATION

SERVICES

Mans electricity, water and drainage are connected to the property. Air source heating with zone controlled under-floor heating throughout. Radon sump.

COUNCIL TAX

Yet to be rated by Cornwall Council.

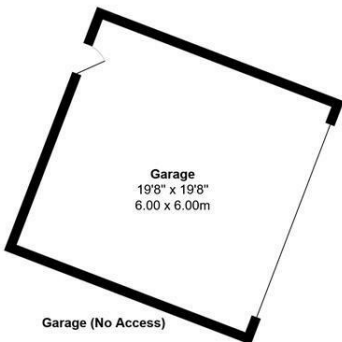
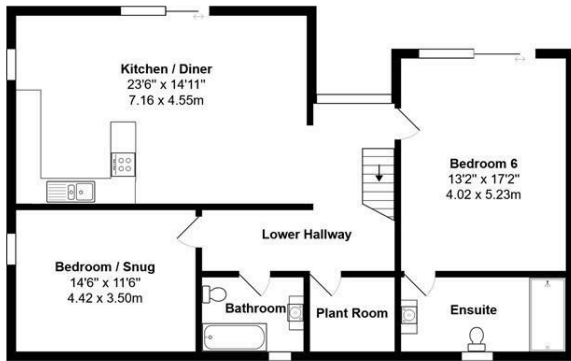
TENURE

Freehold.

VIEWING

By telephone appointment with the vendors' Sole Agent - Laskowski & Company, 28 High Street, Falmouth, TR11 2AD. Telephone: 01326 318813.

Floor Plan



The Park, Kernick Road, Penryn, TR10 8NL
Total Approx Area: 282.6 m² ... 3042 ft² (excluding garage, balcony)

All measurements are approximate and for display purposes only

