



Aldensley Road  
London, W6

CHESTERTONS





This unique property located in the heart of the Brackenbury village area of Hammersmith, offers an excellent balance of living space and bedroom accommodation arranged over four floors.

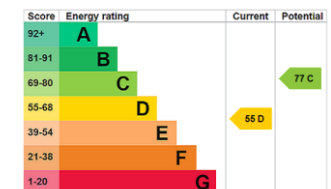
The entrance is a ground floor level with stairs leading the first floor level where there are two double bedrooms, shower room, and family bathroom. The open plan kitchen/ reception room is on the second floor which spans the width and length of the whole floor with amazing triple aspect views, and spiral staircase leading up to the third floor bedroom/study which offers exceptional views across West London.

There is a private garden located next to the entrance of the property and underneath is a huge cellar superb for storage.

Aldensley Road is located in the prestigious area of Brackenbury Village with an array of local amenities including a butcher, delicatessen and gastro pubs with more extensive retail and entertainment facilities available at Westfield shopping centre, or Hammersmith Broadway.

- Amazing Three Bedroom Property
- Arranged over multiple levels
- Three bedrooms, Two Bathrooms
- Wonderful Open Plan Reception/Kitchen
- Private Outside Space
- Large Basement

Asking Price £875,000



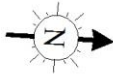
**Tenure:** Leasehold 948 years 2 months  
**Service Charge:** TBC  
**Ground Rent:** TBC  
**Local Authority:** Hammersmith & Fulham  
**Council Tax Band:** E

**Chestertons Chiswick Sales**

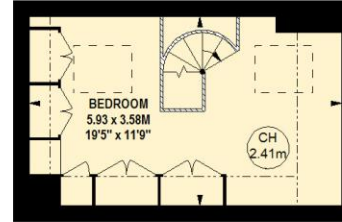
155 Chiswick High Road  
 Chiswick  
 London  
 W4 2DT  
 chiswick@chestertons.co.uk  
 020 8995 3443

## Aldensley Road, W6

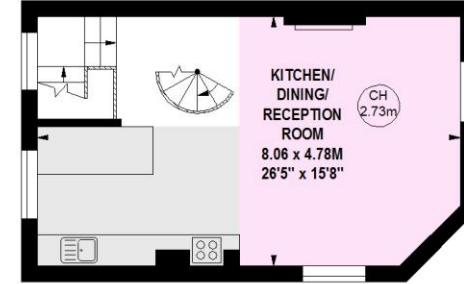
Approximate gross internal area  
**143.44 sq m / 1544 sq ft**  
 (Including Store)



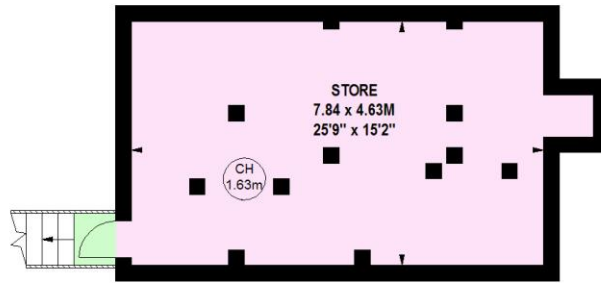
Key :  
 CH - Ceiling Height



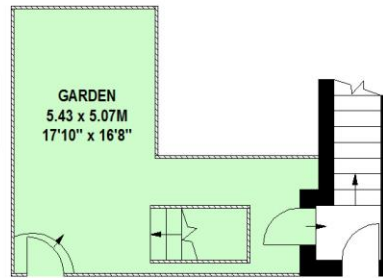
223 sq ft  
**Third Floor**



405 sq ft  
**Second Floor**



401 sq ft  
**Lower Ground Floor**



36 sq ft  
**Ground Floor**



479 sq ft  
**First Floor**

This floor plan is a representation for guidance purposes only, not for valuation.  
 Any figure is approximate and must not be relied on as a statement of fact.  
 Copyright of Wyatt Dixon Homes



Chesterton UK Services Limited trading as Chestertons for themselves and for the vendor of this property whose agents they are, give notice that (i) these particulars do not constitute any part of an offer or contract, (ii) all statements contained within these particulars are made without responsibility on the part of Chestertons or the vendor, (iii) whilst made in good faith, none of the statements contained within these particulars are to be relied upon as a statement or representation of fact, (iv) any intending purchasers must satisfy themselves by inspection or otherwise as to the correctness of each of the statements contained within these particulars, (v) the vendor does not make or give either Chestertons or any person in their employment any authority to make or give representation or warranty whatsoever in relation to this property. Wide angle lenses may be used. ©Copyright Chestertons | Chesterton UK Services Limited | Registered Office 40 Connaught Street, Hyde Park, London W2 2AB Registered Company Number 05334580.



This paper is  
 100% recyclable