



Capital Interchange Way, London TW8

Price £2,750 per month - Unfurnished





Description

The property comprises an open plan kitchen/reception room, two double bedrooms with built in storage, large bathroom, en-suite and a private balcony. All residents will benefit from luxury on site amenities including a concierge, residents' lounge, fully equipped gym, cinema room, work zones and residents' podium gardens.

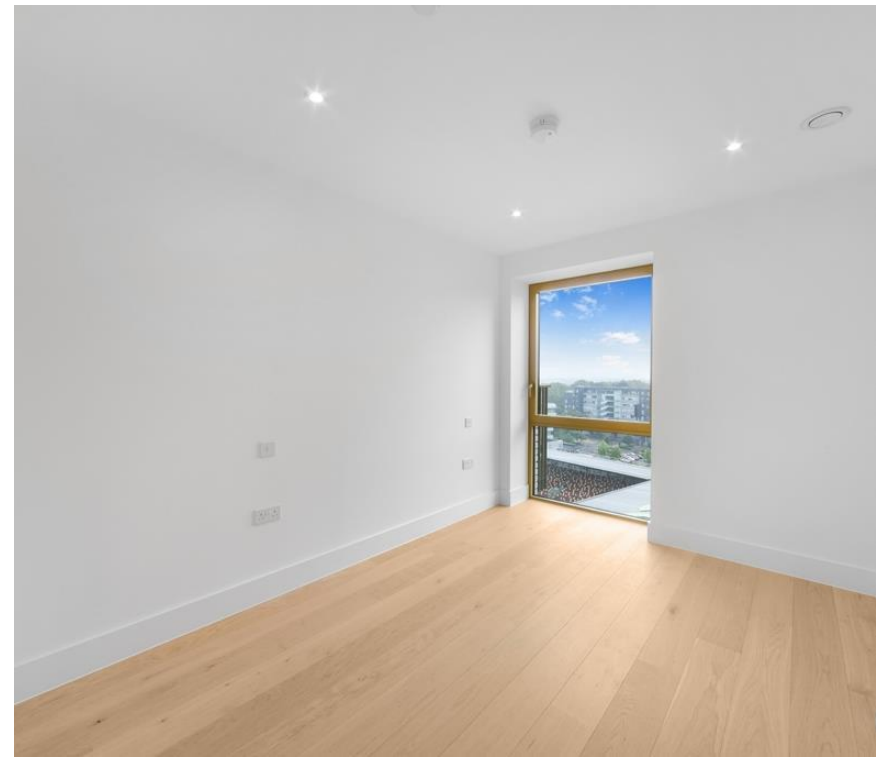
Verdo is an impressive collection of apartments in a blossoming new neighbourhood. Be in the heart of a community-centric destination and look forward to bustling weekend markets, cosy mornings in your local café, social nights in the residents' lounge and serene evening walks in the gardens.

The development is located at the heart of Brentford and puts you in touching distance of some of London's best-loved highstreets for some all-important retail therapy with Chiswick and Richmond High Streets located close by. Kew Bridge station is just a few minutes' walk away and Gunnersbury tube station only a 10 minute stroll, Verdo has great transport links connecting you to central London in just 24 minutes.

Council Tax Band: C
EPC Rating: B

- 2 Double bedrooms
- 2 Bathrooms (1 en-suite)
- Underground Parking Space
- Private south-facing balcony
- 24 Hr Concierge

Resident only leisure facilities
Kew Bridge station within 360 yards
Gunnersbury Park within half a mile
Approx. 765 sq ft / 71.1 sq m

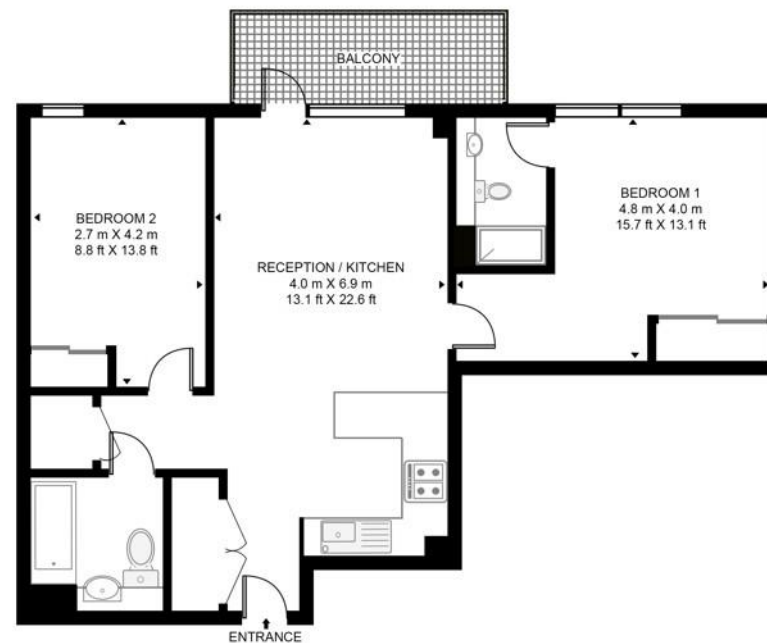


Floorplan

765 sq ft | 71 sq m

JASMINE HOUSE, VERDO

APPROXIMATE GROSS INTERNAL FLOOR AREA 765 SQ.FT (71.1 SQ.M)



Kew Bridge
12 Capital Interchange Way,
London TW8 0SP
020 3147 1880
lettingskewbridge@jll.com

Urban living, your way.

jll.co.uk/residential

© 2019 Jones Lang LaSalle IP, Inc. All rights reserved. All information contained herein is from sources deemed reliable; however, no representation or warranty is made to the accuracy thereof.

