



Edgarley Terrace, SW6

£400,000

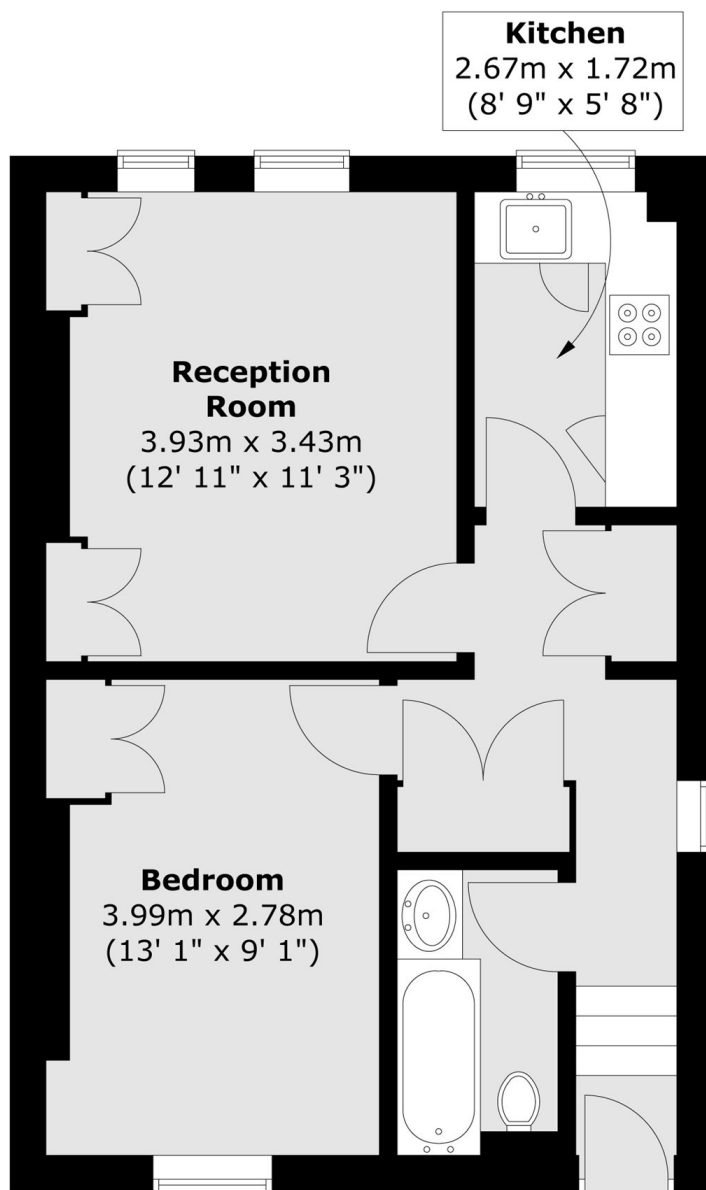
This idyllic one bedroom apartment offers well proportioned rooms and ample storage. The living area features high ceilings, large windows and custom cabinetry, complemented by a separate, fully functional kitchen.

Edgarley Terrace is a quiet residential road conveniently located near the shops, bars and restaurants on the Fulham Palace and Munster Roads. Bishops Park is on your doorstep as well as the Thames Path.

Features

- Long Lease
- High Ceilings
- Separate Kitchen
- Top Floor
- No Chain
- Bishop Park

Edgarley Terrace, London, SW6



Total area (approx.) : 43.1 sq. m (464 sq. ft)