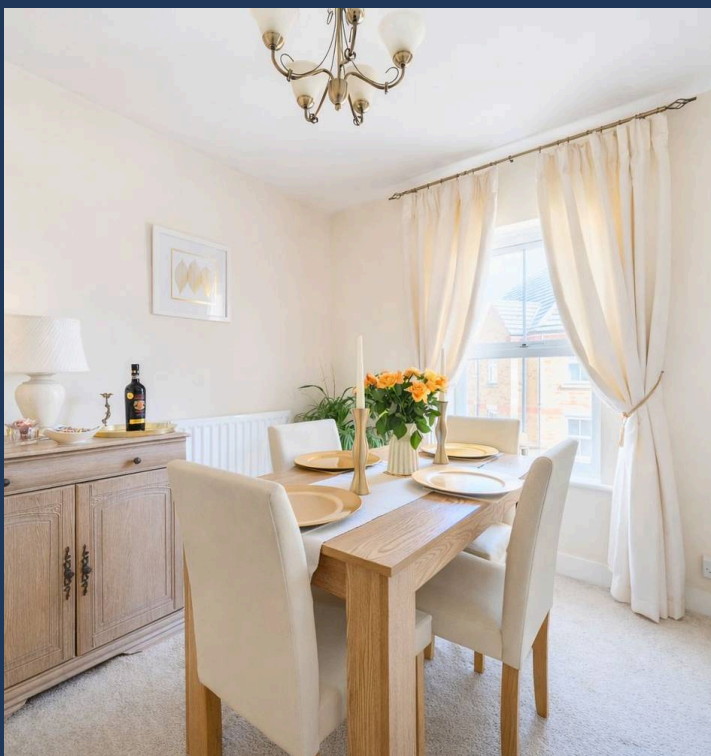




Kensington Court, Hyde Close, Romford RM1

Guide Price £300,000



## Kensington Court, Romford RM1

GUIDE PRICE £300,000 TO £320,000.

This impressive second-floor apartment in the sought-after Rise Park area offers a modern, well-appointed home ideal for a range of buyers. Accessed via a secure entry system, the property opens into a welcoming entrance hallway leading to a spacious lounge/dining room, filled with natural light from large windows – perfect for relaxing or entertaining.

The contemporary fitted kitchen features integrated appliances including oven, hob, fridge freezer and dishwasher, alongside stylish cabinetry for practical everyday living. Both bedrooms are well-proportioned doubles, with the main bedroom benefiting from a sleek en-suite shower room, while the family bathroom is finished to a high standard.

Further benefits include an allocated parking space and access to well-maintained communal areas.

Ideally suited to professionals, first-time buyers or investors, the apartment enjoys a convenient location close to local amenities and transport links. Offering modern interiors, a practical layout and quality finishes throughout, this is a fantastic opportunity—early viewing is advised.

## Kensington Court, Romford RM1

Council Tax band: C

Tenure: Leasehold

EPC Energy Efficiency Rating: C

EPC Environmental Impact Rating: B

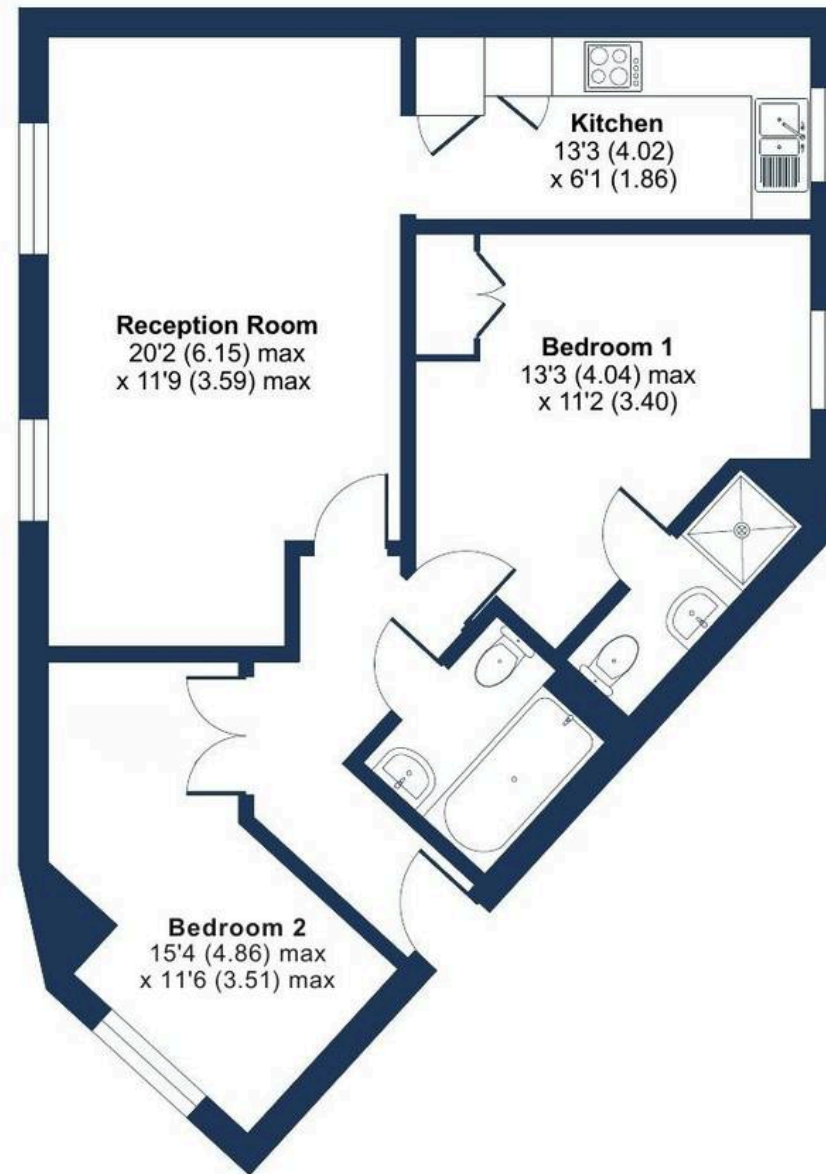
- GUIDE PRICE £300,000 TO £320,000
- 2nd floor apartment situated in Rise Park
- Secure entry system
- Entrance hallway / Spacious lounge / Dining room
- Modern fitted kitchen with integrated appliances
- Two double bedrooms with en-suite shower room to main bedroom
- Further family bathroom
- Allocated parking space
- Communal gardens
- EPC Energy Rating C



# Hyde Close, Romford, RM1

Approximate Area = 719 sq ft / 66.7 sq m

For identification only - Not to scale



**SECOND FLOOR**



Floor plan produced in accordance with RICS Property Measurement Standards incorporating International Property Measurement Standards (IPMS2 Residential). © nichecom 2026. Produced for Brookings Estate Agents. REF: 1431024



**BROOKINGS**  
SALES · LETTINGS · MANAGEMENT