



Marylebone Road, NW1
£1,495,000

Dexters



Marylebone Road, NW1

A three bedroom apartment in the Edwardian Grade II listed Manor House. The property enjoys a bright southerly aspect, long lease, lift and on site porter.

The two joined reception rooms provides excellent living and entertaining space. The principal bedroom has a walk in wardrobe and there are two further bedrooms, bathroom and separate shower room. There is a kitchen - breakfast room with adequate space to dine..

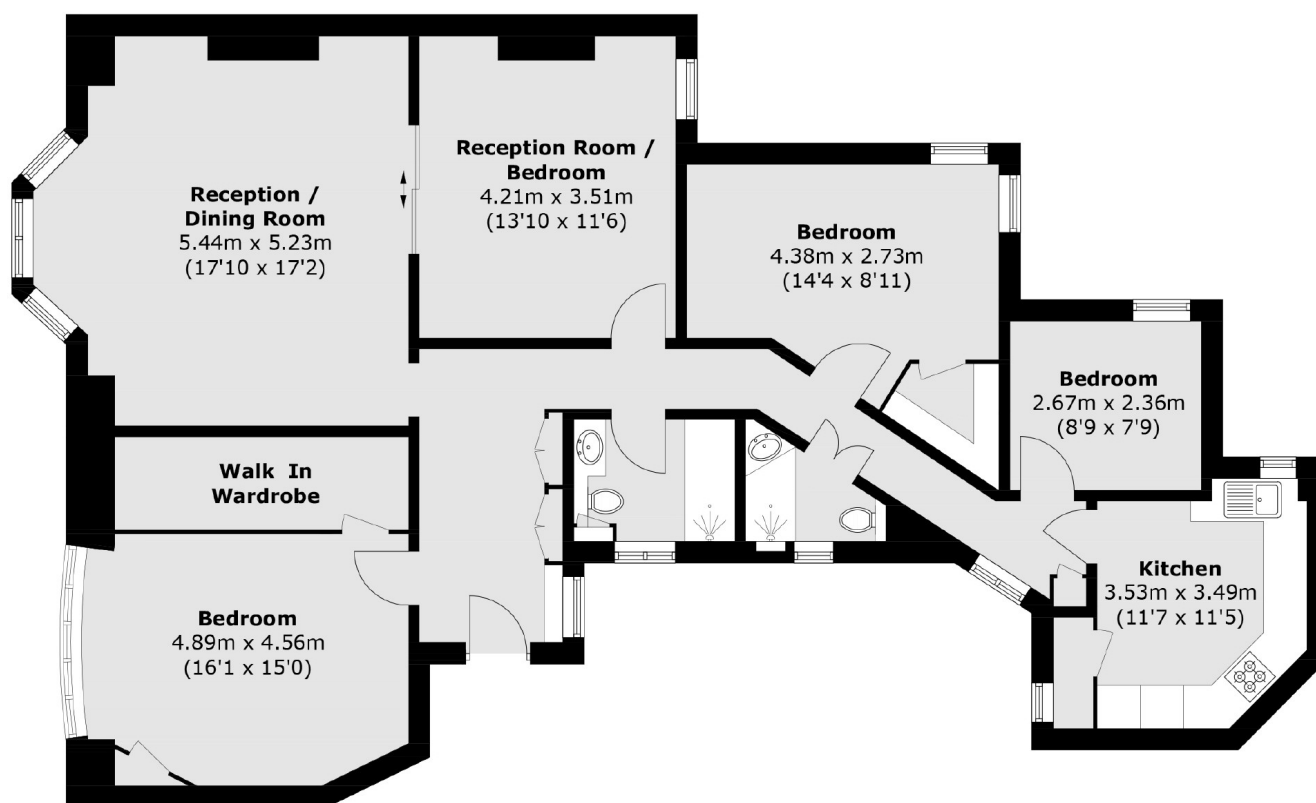
Accessible to London Marylebone and Baker Street Stations, Regents Park and Marylebone High Street.

Features

- Three Bedrooms
- Two Reception Rooms
- Two Bathrooms
- Porter & Lift
- Kitchen - Breakfast Room
- Lease 999 from 2009



Marylebone Road, London, NW1



Second Floor

Total area (approx.): 120.4 sq. m (1,295.9 sq. ft)