



Prince Albert Square, Redhill

£440,000





A three-bedroom end of terrace home offered chain free, with a practical layout including a front reception room and an open plan kitchen/dining space to the rear. Upstairs offers two double bedrooms, a single bedroom and a shower room, with a private rear garden, outbuilding with power, rear access and off-street parking for two cars.





This well-presented three-bedroom end-of-terrace home is offered to the market with no onward chain.

The ground floor features a separate front reception room alongside a spacious open-plan kitchen/dining area to the rear, creating a practical layout suited to both everyday living and entertaining.

Upstairs, the property offers two double bedrooms, a single bedroom, and a modern shower room, all accessed from the landing.

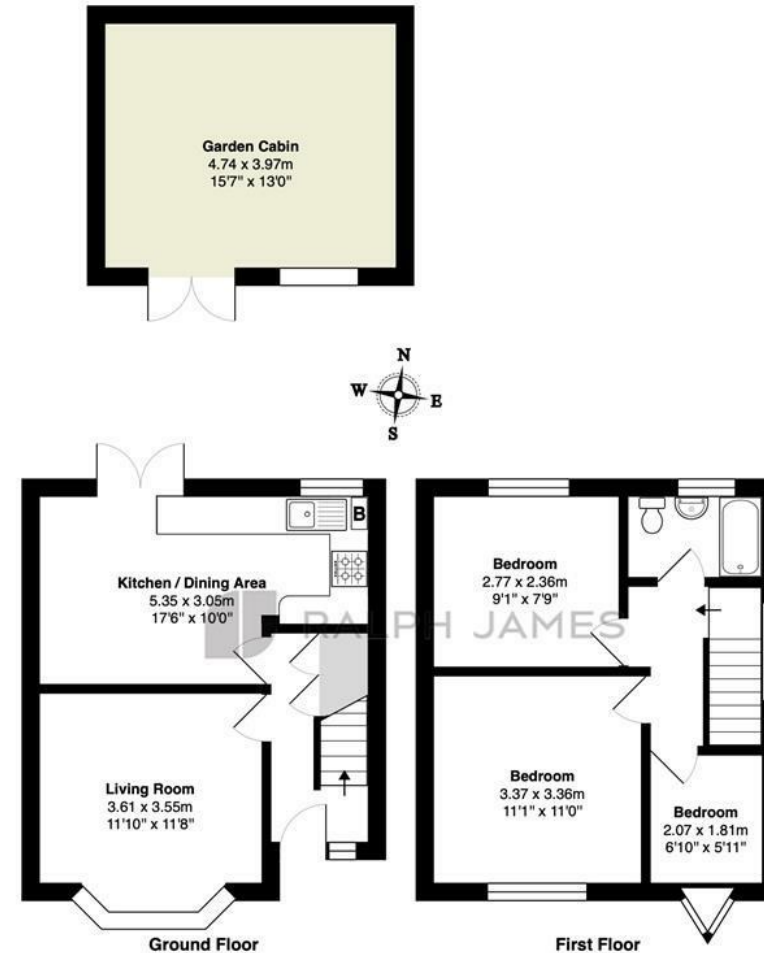
Externally, the rear garden provides a good degree of privacy and includes a useful outbuilding with power, ideal for storage or use as a home workspace. There is also convenient rear access. To the front, the property benefits from off-street parking for two vehicles.

Overall, this is a straightforward and well-balanced home, ideal for buyers seeking a ready-to-move-into property.



Need to know

- Offered to the market chain free.
- Three-bedroom end of terrace home.
- Front reception room with separate living space.
- Open plan kitchen and dining room to the rear.
- Two double bedrooms and one single bedroom upstairs.
- Modern shower room accessed from the landing.
- Rear garden with outbuilding providing power and useful workspace.
- Off-street parking to the front for two vehicles and rear access.



Interested?

redhill@ralphjames.co.uk
01737 765 555

1

ralphjames.co.uk

Prince Albert Road, Redhill
Total Area: 67.4 m² ... 725 ft² (excluding garden cabin)
FOR ILLUSTRATIVE PURPOSES ONLY.

Whilst every attempt has been made to ensure the accuracy of the floor plan shown, all measurements, positioning, fixtures, features, fittings and any other data shown are an approximate interpretation for illustrative purposes only and are not to scale.

No responsibility is taken for any error, omission, miss-statement or use of data shown.

The above statement applies to both 'Still Moving London LTD' and the Company or individual displaying this floor plan.

Unauthorised reproduction prohibited.

© Still Moving London LTD (www.stillmoving.london)

RALPH JAMES