



BLACKHEATH ROAD, SE10

£600,000

Semi-detached house
Two bedrooms
Two bathrooms
Small gated development
South facing garden
Energy rating: c

@marshandparsons
marshandparsons.co.uk

MARSH &
PARSONS



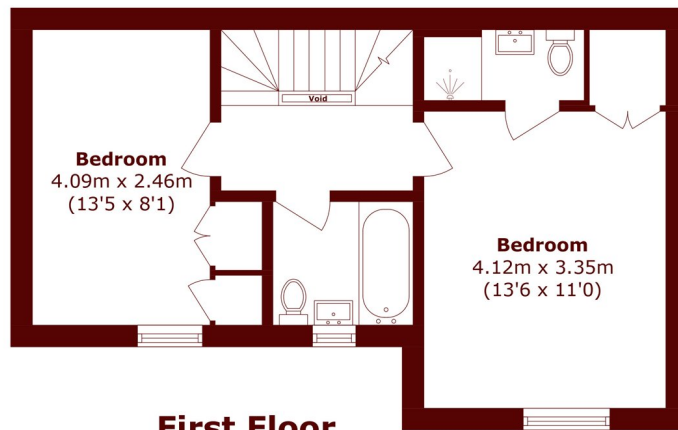
ABOUT THE PROPERTY

Semi-detached double fronted modern house, nestled away within a small gated community and featuring off street parking and a front south facing garden. Inside you will find a spacious lounge diner, kitchen/breakfast room, separate utility room and guest WC. Upstairs there are two large bedrooms, the principle benefits from an en suite, and a family bathroom. Added advantages include loft storage, double glazed windows, gas central heating and is being sold chain free.

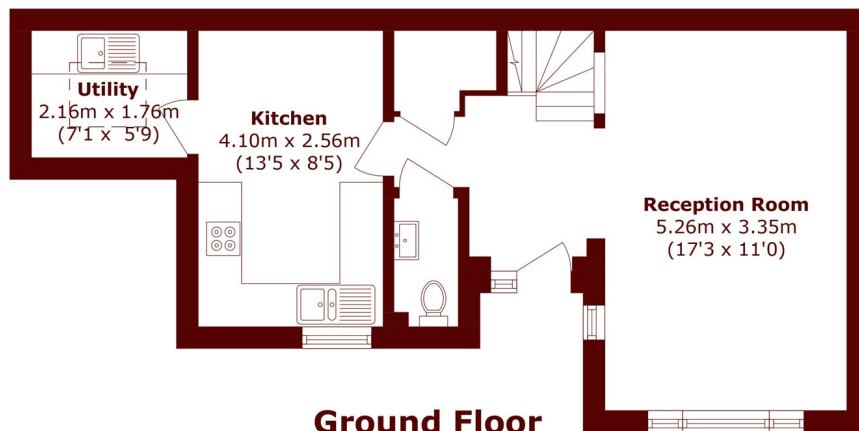
Greenwich rail and DLR stations are within a very short walking distance, as well as the town centre where you will find a great choice of shopping facilities, riverside pubs, the covered market, royal park and Greenwich pier.



STEP INSIDE BLACKHEATH ROAD



First Floor



Ground Floor

Total area (approx.): 82.7 sq. m (890.1 sq. ft)
(Excluding Void)

Greenwich
020 8312 8312

Energy Rating: C We aim to make our particulars both accurate and reliable. However, they are not guaranteed; nor do they form part of an offer or contract. If you require clarification on any points then please contact us, especially if you're traveling some distance to view. Please note that appliances and heating systems have not been tested and therefore no warranties can be given as to their good working order

**MARSH &
PARSONS**